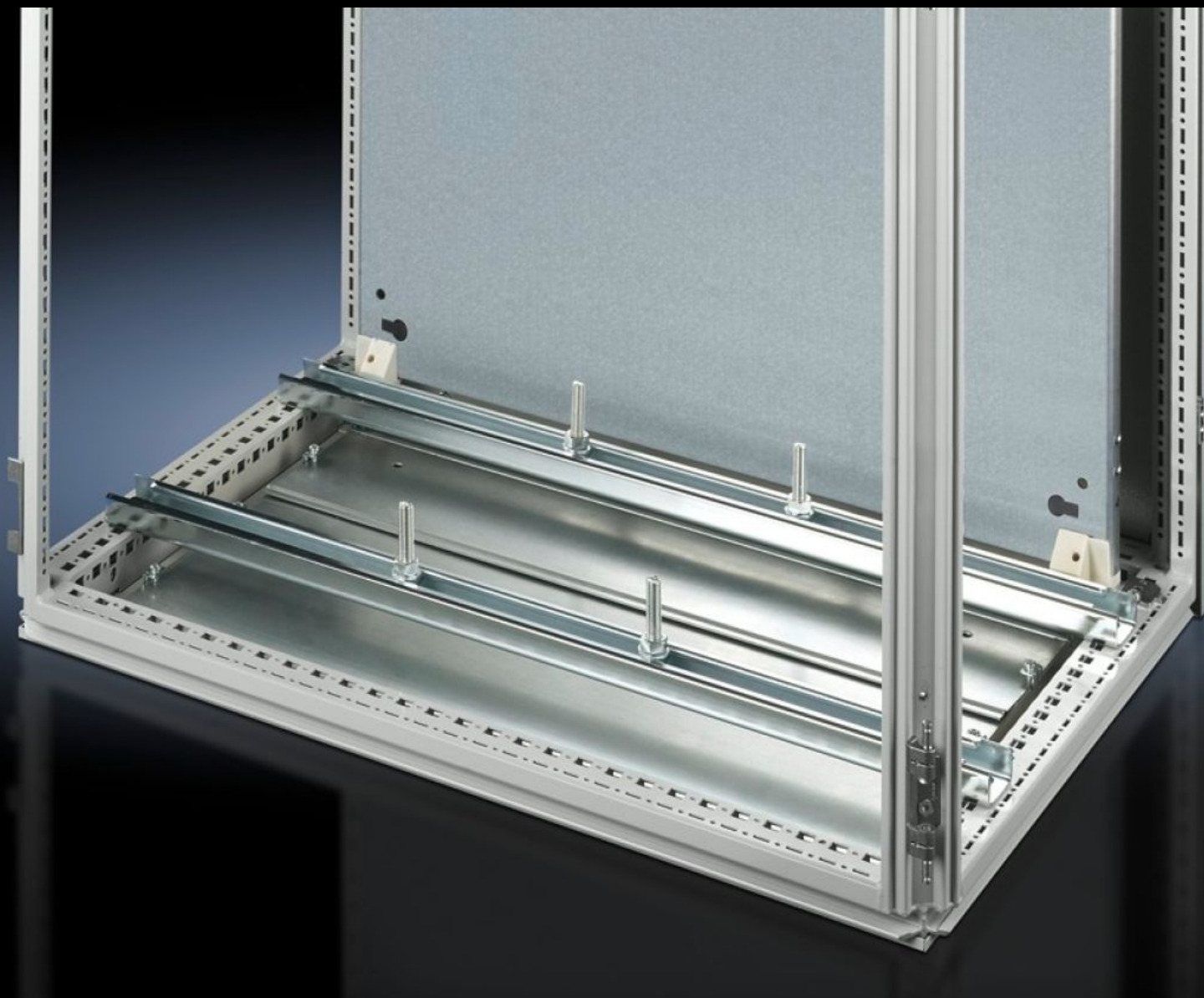
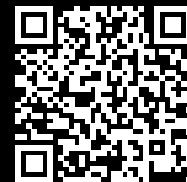


Rittal – The System.

Faster – better – everywhere.



SZ 4363.000

System support rails

State: 23.07.2025 (Source: rittal.com/ua-en)

ENCLOSURES

POWER DISTRIBUTION

CLIMATE CONTROL

IT INFRASTRUCTURE

SOFTWARE & SERVICES

FRIEDHELM LOH GROUP



SZ 4363.000 - System support rails

For heavy installed equipment such as transformers. T-head screw and slot in the support rail accommodate all mounting dimensions.



Features

Model No.	SZ 4363.000
Product description	For heavy installed equipment such as transformers. T-head screw and slot in the support rail accommodate all mounting dimensions.
Material	Sheet steel
Surface finish	Zinc-plated
Supply includes	2 system support rails (45 x 25 mm) 4 T-head screws M12 x 60 mm Assembly parts
Installation options	On the vertical TS enclosure section via snap-on nuts TS 8800.808 or adaptor rails for VX compatibility, height-offset, via TS punched rail 25 x 38 mm On the VX SE enclosure section in the width (bottom and top) or in the depth (bottom and top) (without mounting plate) via snap-on nuts 8800.808. On the horizontal TS enclosure section: in the width, in the depth (without mounting plate) On base configuration rail for TP
To fit	Enclosure type: TS Width: = 1,200 mm
Packs of	2 pc(s).
Net weight	5.416

Features

Gross weight	6.2
Customs tariff number	73269098
EAN	4028177099715
ETIM 9	EC000293
ETIM 8	EC001285
ECLASS 8.0	27189261