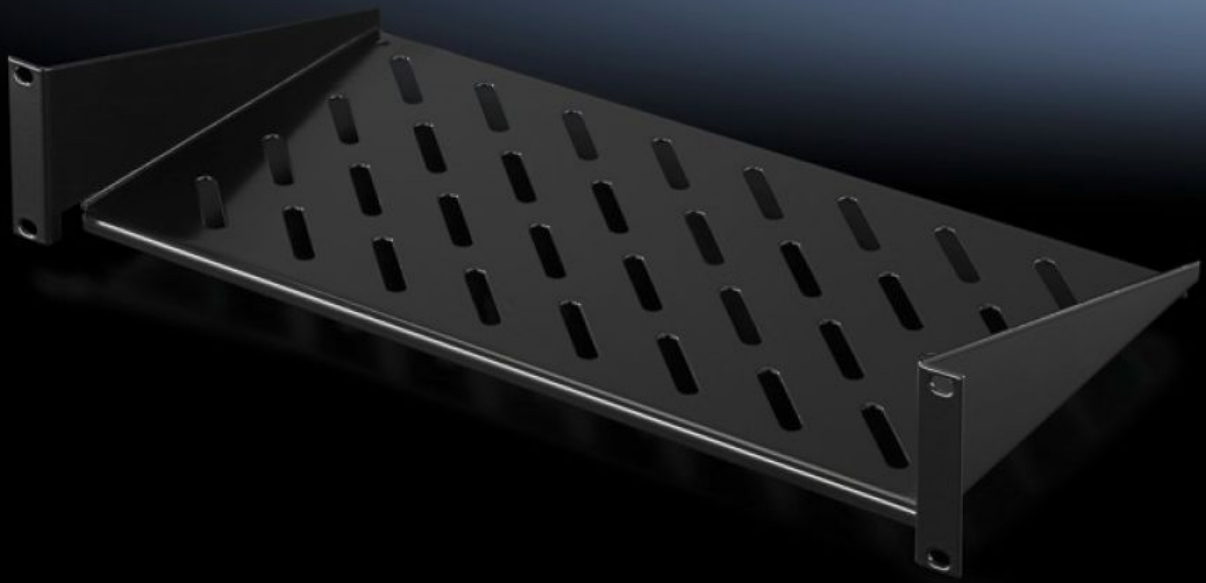


**Rittal – The System.**

Faster – better – everywhere.



**DK 5501.615**

**Component shelf 2 U, static  
installation**

State: 17.04.2026 (Source: [rittal.com/ua-en](http://rittal.com/ua-en))

ENCLOSURES

POWER DISTRIBUTION

CLIMATE CONTROL

IT INFRASTRUCTURE

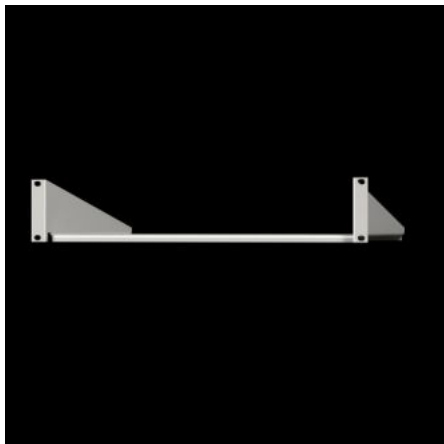
SOFTWARE & SERVICES

FRIEDHELM LOH GROUP



# DK 5501.615 - Component shelf 2 U, static installation

Component shelf 2 U, static installation for attachment to the 482.6 mm (19") system punchings.  
Load capacity: 25 kg.



## Features

Model No.	DK 5501.615
Design	482.6 mm (19")
Product description	For mounting between 482.6 mm (19") mounting angles.
Material	Sheet steel
Surface finish	Spray-finished
Colour	RAL 9005
Load capacity	25 kg surface load, static
Note	Not suitable for combination with telescopic slides.
Dimensions	Width: 482.6 mm Depth: 250 mm
Packs of	1 pc(s).
Net weight	2.078 kg
Gross weight	2.125 kg
PCF per pack (cradle-to-gate)	9.5 kg CO2 eq (Cat B)
Note on PCF category	Category B: PCF value (cradle-to-gate) based on the product weight, approximately calculated and self-declared

# Features

---

Customs tariff number	73269098
ETIM 9	EC002620
ECLASS 8.0	27189261
Product description	DK Component shelf, WHD: 482,6x2 Ux250 mm, 25 kg, static, distance between levels:, static installation, For 482.6 mm (19") system punchings, RAL 9005

---