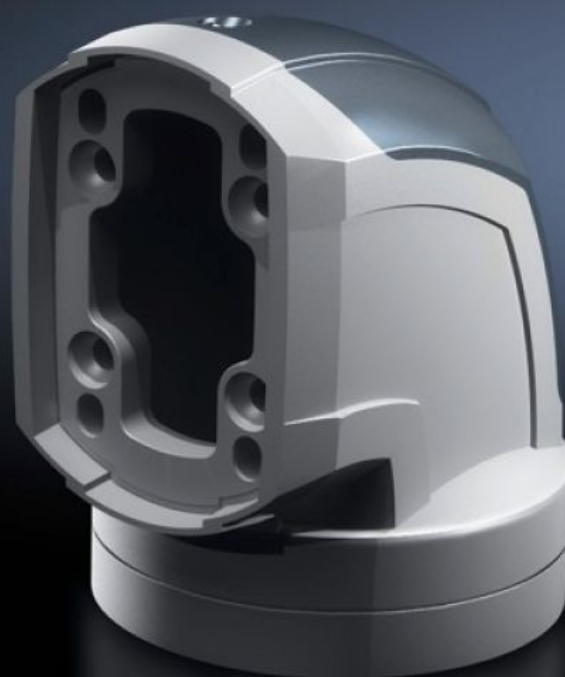


Rittal – The System.

Faster – better – everywhere.



CP 6212.380

Angle coupling 90°, CP 120

State: 25.08.2025 (Source: rittal.com/ua-en)

ENCLOSURES

POWER DISTRIBUTION

CLIMATE CONTROL

IT INFRASTRUCTURE

SOFTWARE & SERVICES

FRIEDHELM LOH GROUP



CP 6212.380 - Angle coupling 90°, CP 120 for support arm connection Ø 130 mm

For swivel mounting of the enclosure on the horizontal part of the support arm system. Enclosure may be suspended or top-mounted. Removable cover for simple cable entry.

Features

Model No.	CP 6212.380
Product description	For swivel mounting of the enclosure on the horizontal part of the support arm system. Enclosure may be suspended or top-mounted. Removable cover for simple cable entry.
Material	Angle coupling: Cast aluminium/die-cast zinc Cover: Plastic
Colour	Angle coupling: RAL 7035 Cover: RAL 7024
Supply includes	Seals Grub screws Adjusting screws Self-tapping screws for support section attachment
Rotating/tilting	Yes
Rotation angle/swivel area	approx. 310°, lockable via clamping levers The range of rotation can be limited by inserting the grub screws provided
Packs of	1 pc(s).
Net weight	2.097
Gross weight	2.28
Customs tariff number	79070000
EAN	4028177684201
ETIM 9	EC000882
ECLASS 8.0	27400556

Approvals

Explanations

Manufacturer's declaration