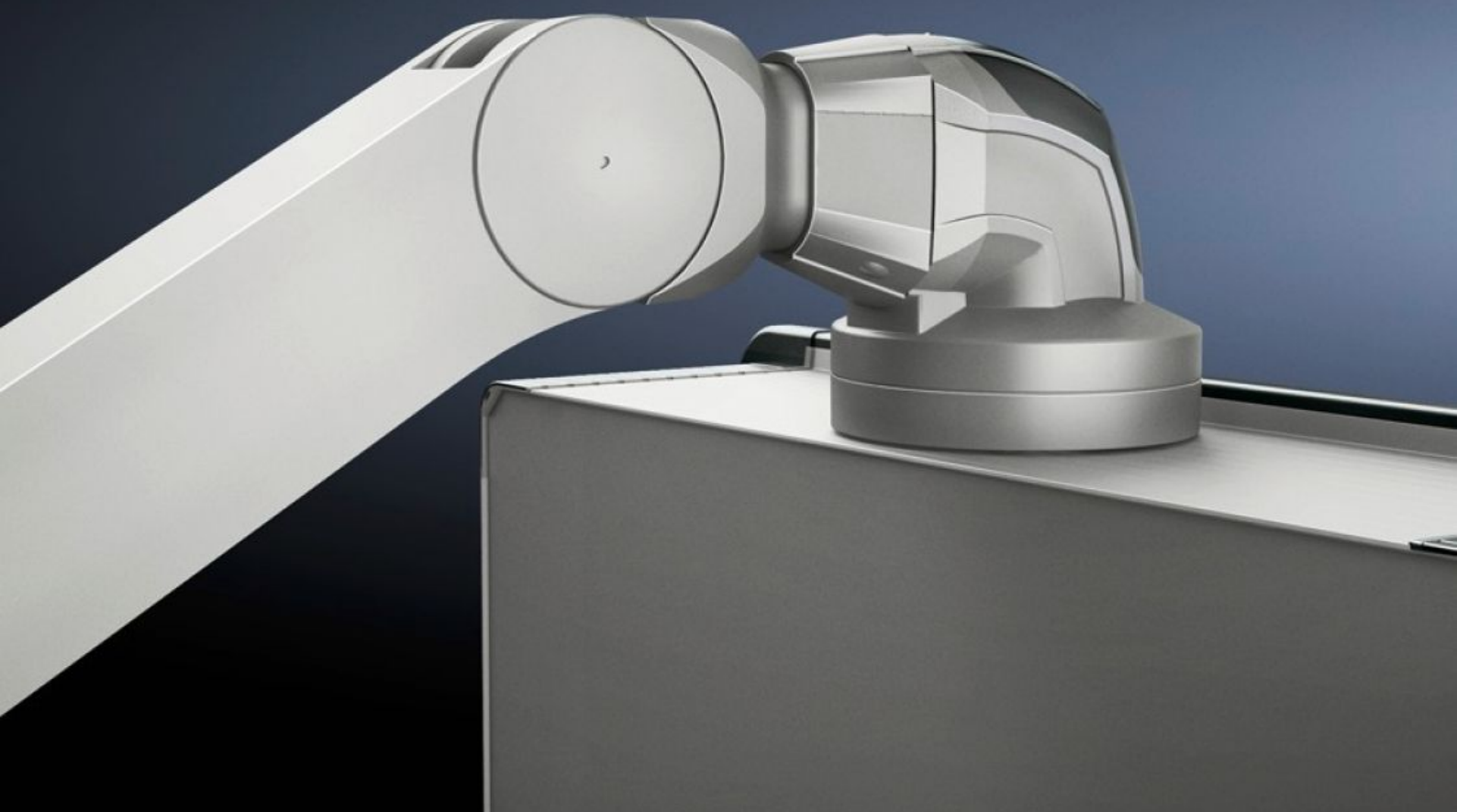
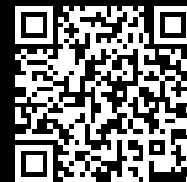


Rittal – The System.

Faster – better – everywhere.



CP 6510.210

Support arm, height-adjustable

State: 16.08.2025 (Source: rittal.com/ua-en)

ENCLOSURES

POWER DISTRIBUTION

CLIMATE CONTROL

IT INFRASTRUCTURE

SOFTWARE & SERVICES

FRIEDHELM LOH GROUP



CP 6510.210 - Support arm, height-adjustable for support arm systems CP 120

Offers enhanced ergonomics

Features

| | |
|-----------------------|---|
| Model No. | CP 6510.210 |
| Product description | Offers enhanced ergonomics thanks to adjustment range for tall and short operators, for seated and standing work adjustable to up to 800 mm as required via an adjustment screw at the front of the support arm. Clip-off plastic panels for access to integral cable routing. |
| Benefits | Precise coordination of the compression spring to the enclosure weight via an adjusting screw at the rear of the support arm Complete functional reliability – if the compression spring breaks, the arm will remain in position Tilting angle of the mounted enclosure is identical in every height position |
| Colour | RAL 9006 |
| Supply includes | Assembly parts |
| Length | 962 mm |
| Installation options | Maximum cross-section for cable entry 8 x 15 mm |
| Note on Model No. | Weight range applies to configured enclosure and vertical support section. |
| Dimensions | Length: 962 mm |
| Load capacity | 10 kg...20 kg |
| Packs of | 1 pc(s). |
| Net weight | 7.574 |
| Gross weight | 7.973 |
| Customs tariff number | 73269098 |
| EAN | 4028177331952 |

Features

ECLASS 8.0

27189263

Approvals

Explanations

Manufacturer's declaration

Tender text

Support arm, height adjustable for support arm systems CP 120
Support arm, height adjustable offers enhanced ergonomics thanks to Adjustment range, for tall and short operators, for seated and standing work. Adjustable to a maximum of 800 mm as required via an adjusting screw at the front of the support arm. Complete functional reliability - if the compression spring breaks, the arm will remain in position. Clip-off plastic panels for access to integral cable routing. Tilting angle of the mounted enclosure is identical in every height position.

Weight/pack: 8 kg

Weight range: 10 - 20 kg

Weight range applies to configured enclosure and vertical support section.

Colour: RAL 9006

Length: 962 mm

Model No: 6510210

producer: Rittal GmbH & Co. KG