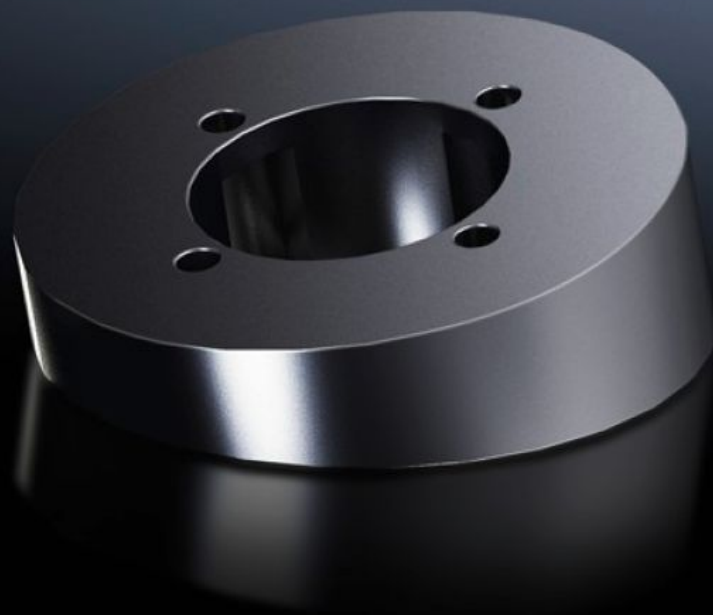
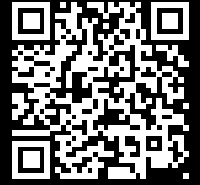


**Rittal – The System.**

Faster – better – everywhere.



**CP 6664.100**

**Tilting adapter 10° CP 40, stainless steel**

State: 23.05.2026 (Source: [rittal.com/ua-en](http://rittal.com/ua-en))

ENCLOSURES

POWER DISTRIBUTION

CLIMATE CONTROL

IT INFRASTRUCTURE

SOFTWARE & SERVICES

FRIEDHELM LOH GROUP



# CP 6664.100 - Tilting adapter 10° CP 40, stainless steel

For mounting between coupling system 40 or attachment system 40 and the command panel.

## Features

Model No.	CP 6664.100
Design	Tilting adaptor 10°
Material	Stainless steel 1.4305 (AISI 303)
IP protection category to IEC 60 529	IP 66 to IEC 60 529, 2014-09 IP X9 to IEC 60 529, 2014-09
Rifid y/n	Yes
Packs of	1 pc(s).
Net weight	0.62 kg
Gross weight	0.721 kg
Customs tariff number	73269098
ETIM 9	EC000882
ECLASS 8.0	27400556
Product description	CP Tilting adaptor 10°, CP 40, stainless steel, 1.4305

## Approvals

Explanations

Manufacturer's declaration