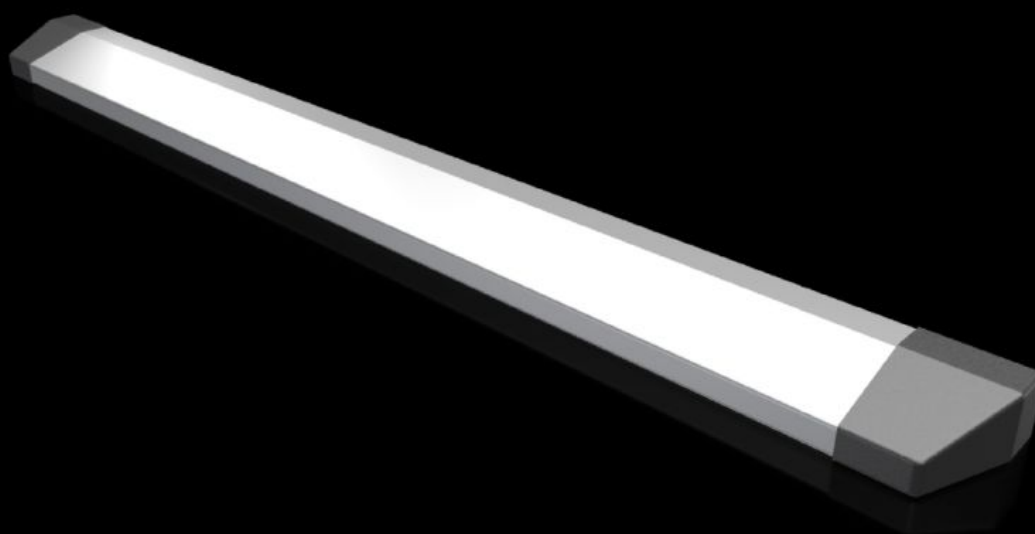


Rittal – The System.

Faster – better – everywhere.



CX 6730.800

CX aluminium strip

State: 25.07.2025 (Source: rittal.com/ua-en)

ENCLOSURES

POWER DISTRIBUTION

CLIMATE CONTROL

IT INFRASTRUCTURE

SOFTWARE & SERVICES

FRIEDHELM LOH GROUP



CX 6730.800 - CX aluminium strip

Prevents wiring plans etc. from slipping off, and allows retrospective external mounting on CX desk units, consoles and one-piece consoles.



Features

| | |
|----------------------|--|
| Model No. | CX 6730.800 |
| Material | Extruded aluminium section Cover caps: Plastic |
| Surface finish | Aluminium extruded section: natural anodised |
| Colour | Cover caps: RAL 7016 |
| Supply includes | 1 aluminium section 6 plastic covers Drilling template Assembly parts |
| Length | 1,750 mm |
| Installation options | Easily cut to length for other sizes 3 x width 600 mm 2 x width 800 mm 1 x width 1000 mm + 1 x width 600 mm 1 x width 1200 mm 1 x width 1600 mm |
| To fit | CX console system CX one-piece console |
| Packs of | 1 pc(s). |
| Net weight | 1 |
| Gross weight | 1.23 |

Features

| | |
|-----------------------|---------------|
| Customs tariff number | 76042990 |
| EAN | 4028177994744 |
| ETIM 9 | EC002620 |