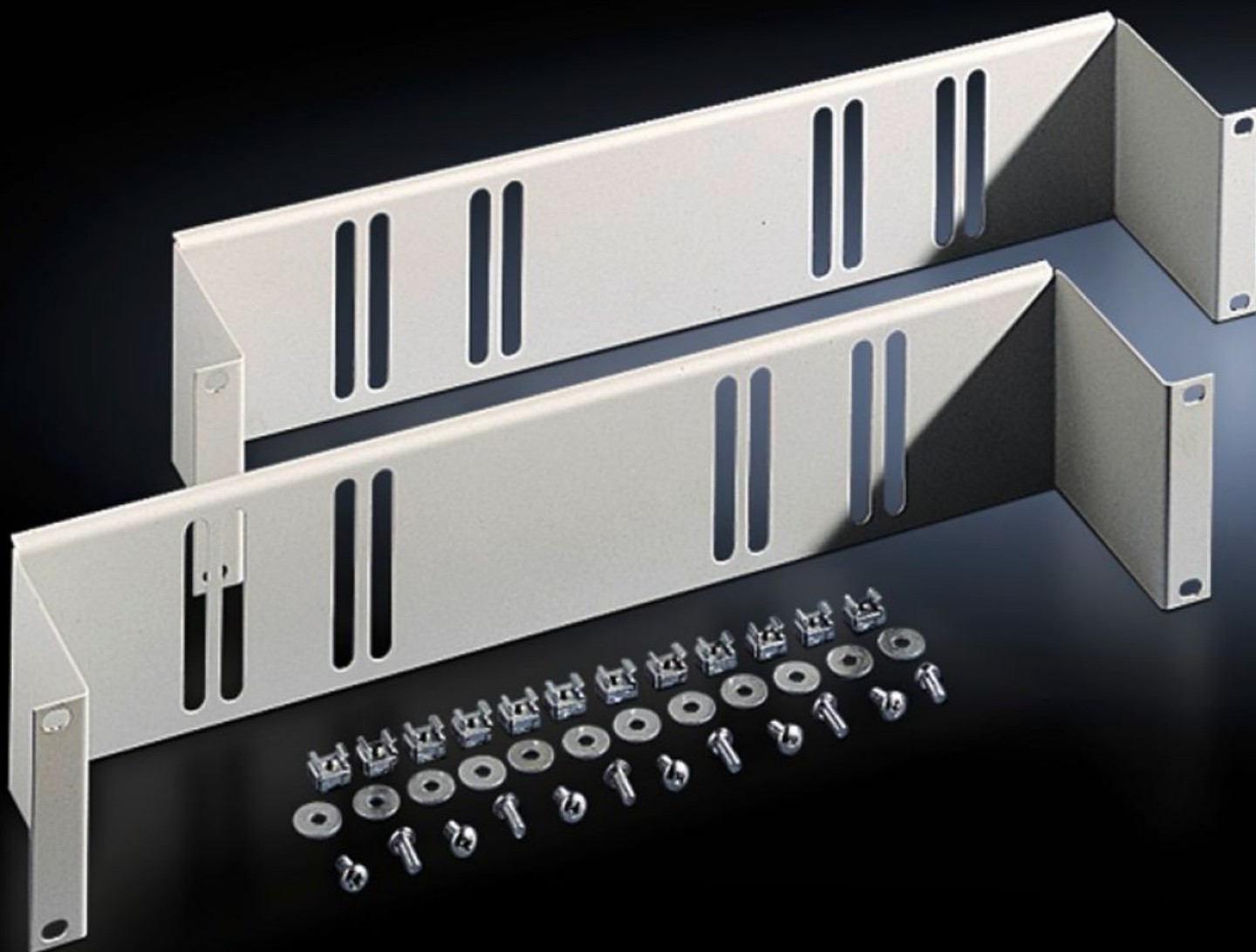
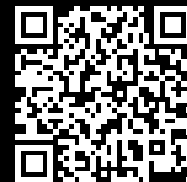


Rittal – The System.

Faster – better – everywhere.



DK 7050.035

Accommodation system, 2 U

State: 15.09.2025 (Source: rittal.com/ua-en)

ENCLOSURES

POWER DISTRIBUTION

CLIMATE CONTROL

IT INFRASTRUCTURE

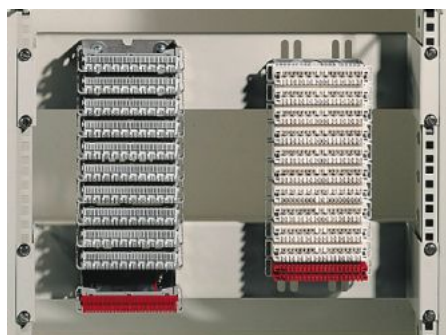
SOFTWARE & SERVICES

FRIEDHELM LOH GROUP



DK 7050.035 - Accommodation system, 2 U for LSA installation kit

To accommodate LSA mounting troughs/universal mounting brackets on the 482.6 mm (19") mounting angle.



Features

| | |
|-------------------------------|--|
| Model No. | DK 7050.035 |
| Product description | To accommodate LSA support systems within the 482.6 mm (19") mounting level. |
| Material | Sheet steel |
| Surface finish | Spray-finished |
| Colour | RAL 7035 |
| Supply includes | Assembly parts |
| Dimensions | Depth: 98.5 mm |
| Packs of | 2 pc(s). |
| Net weight | 1.204 |
| Gross weight | 1.38 |
| PCF per pack (cradle-to-gate) | 5.2 kg CO2 eq (Cat B) |
| Note on PCF category | Category B: PCF value (cradle-to-gate) based on the product weight, approximately calculated and self-declared |
| Customs tariff number | 83024900 |
| EAN | 4028177166233 |

Features

| | |
|------------|----------|
| ETIM 9 | EC002620 |
| ECLASS 8.0 | 27189261 |

Tender text

LSA installation kit, RAL 7035

Installation in the enclosure width

Material: Sheet steel, painted, RAL 7035

Dimensions (W x H x D): 482,6 mm x 89 mm (2 HE) x 985 mm