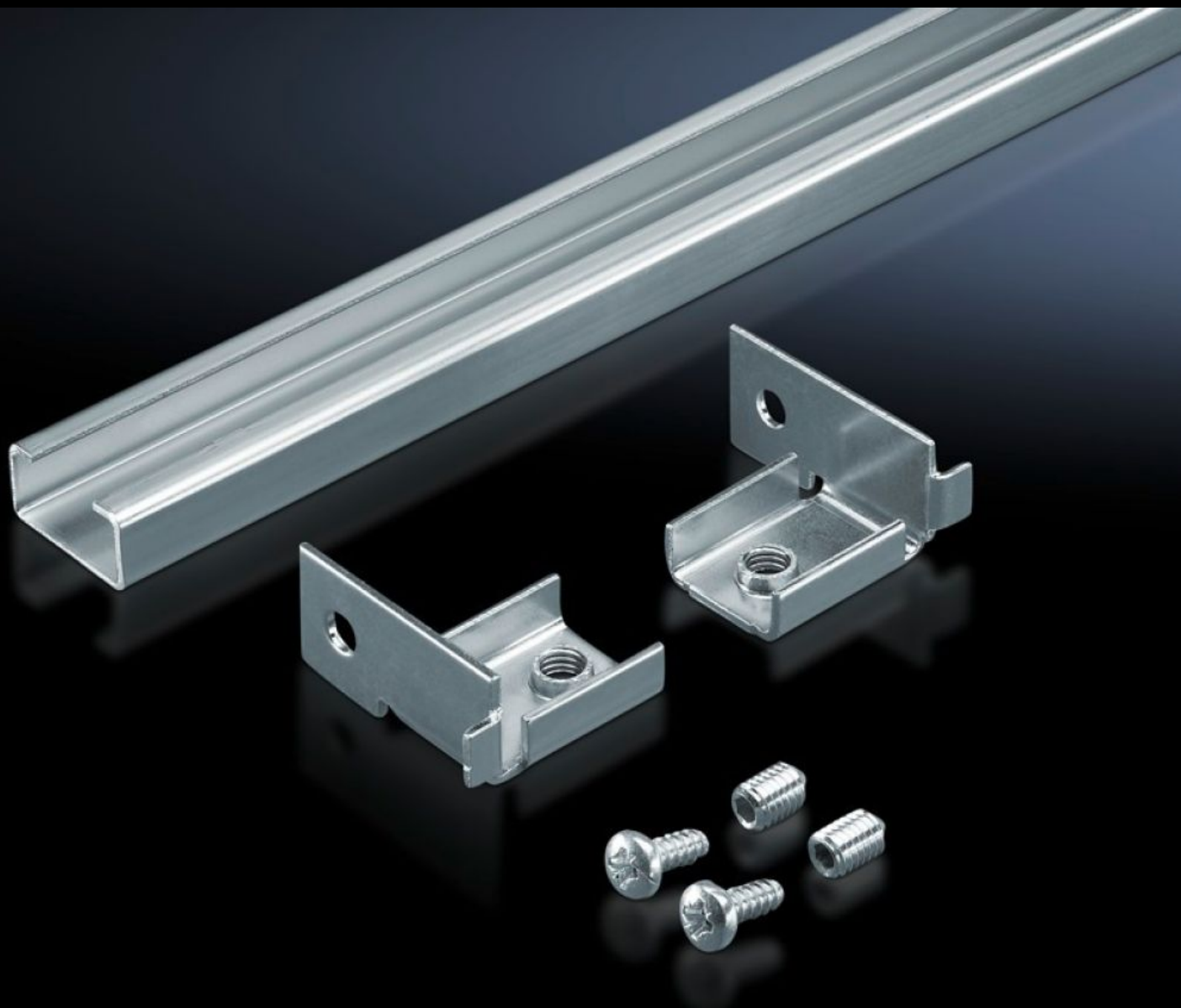


# Rittal – The System.

Faster – better – everywhere.



## DK 7100.000

## C rails

State: 05.04.2026 (Source: [rittal.com/ua-en](http://rittal.com/ua-en))

ENCLOSURES

POWER DISTRIBUTION

CLIMATE CONTROL

IT INFRASTRUCTURE

SOFTWARE & SERVICES

FRIEDHELM LOH GROUP



# DK 7100.000 - C rails for DK-TS

For direct mounting on the horizontal enclosure section.



## Features

Model No.	DK 7100.000
Material	Sheet steel
Surface finish	Zinc-plated
Supply includes	Assembly parts
Length	890 mm
Installation options	On the horizontal enclosure sections On the vertical TS, VX SE enclosure section via adaptor rails for VX compatibility
To fit	Enclosure type: DK-TS Width: 1,000 mm Depth: 1,000 mm
Packs of	6 pc(s).
Net weight	4.422 kg
Gross weight	4.623 kg
Customs tariff number	73269098
ECLASS 8.0	27400501

## Tender text

C rails for PS, FM

For use as cable clamp rails

Installation in enclosure width: Width 1000 mm, length 900 mm

Material: Sheet steel, zinc-plated, passivated

Dimensions (W x H x D): 30 mm x 15 mm x 900 mm