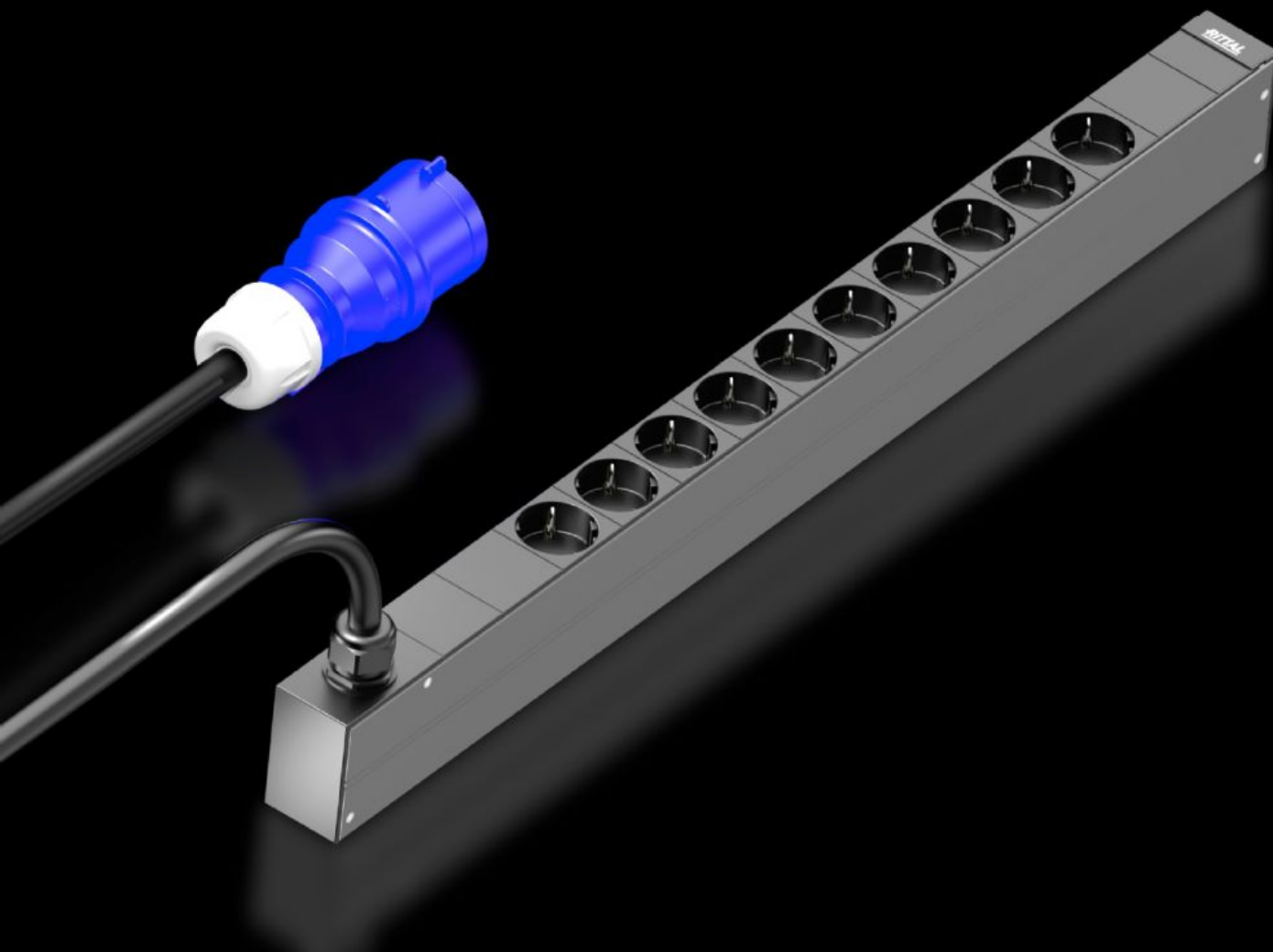
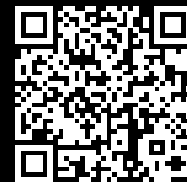


Rittal – The System.

Faster – better – everywhere.



DK 7979.111 PDU basic

State: 28.08.2025 (Source: rittal.com/ua-en)

ENCLOSURES

POWER DISTRIBUTION

CLIMATE CONTROL

IT INFRASTRUCTURE

SOFTWARE & SERVICES

FRIEDHELM LOH GROUP



DK 7979.111 - PDU basic

High-end IT rack power distribution: Robust PDU with compact basic power distribution for the IT environment.



Features

Model No.	DK 7979.111
Product description	Compact basic power distribution. Thanks to the PDU basic, any IT rack can easily be equipped with a professional power distribution system. Depending on the PDU design, horizontal mounting in the 482.6 mm (19") level or vertical mounting (including in the zero-U space) is possible.
Benefits	For vertical mounting, it may be attached in the zero-U space of the Rittal VX IT or TS IT rack with no need for tools Colour coding of phases and fuse circuits (L1=pink, L2=black, L3=white) Tool-free divider kit for VX IT
Material	Extruded aluminium section, anodised Slots: Plastic
Supply includes	Connector lock for IEC C14 and C20 connectors Assembly parts
Options	Type 3 overvoltage protection with interchangeable arresters while operational, with status monitoring, suitable for integration into PDU enclosure Other enclosure colours are available

Features

Dimensions	Width: 44 mm Depth: 70 mm Length: 695 mm
No. of sockets and type	10 x earthing-pin (type F, CEE 7/3)
Rated operating voltage	230 V (AC)
Rated current (max.)	16 A
Power consumption	3.7 kW
Infeeds	Qty.: 1 Phases per infeed: 1~
Length of connection cable	3 m
Type of electrical connection	CEE
Directives	EMC Directive 2014/30/EU Low Voltage Directive 2014/35/EU
Standards	EN 62368-1 EN 61000-3 EN 61000-4 EN 61000-6 EN 62053-21
Operating temperature range	5 °C...50 °C
Ambient humidity (non-condensing)	10...95 %
Storage temperature range	-20 °C...70 °C
Input cable connection (type/length)	3 m
To fit	Enclosure type: VX IT enclosure frame: ≥ 1,200 mm Enclosure type: VX IT 19" mounting angles: ≥ 1,200 mm
Packs of	1 pc(s).
Net weight	2.6
Gross weight	2.72
Customs tariff number	85366990
EAN	4028177947405

Features

E-Number Sweden	E8407006
ETIM 9	EC002762
ETIM 8	EC002762
ECLASS 8.0	27142604

Approvals

Explanations	Declaration of conformity
--------------	---------------------------

Tender text

Rittal PDU basic, Model No.: DK 7979.111

Compact power distributor for deployment in IT server and network enclosures. Vertical installation in the Zero-U space using the supplied universal brackets for common IT racks. Suitable for tool-free quick assembly in the Rittal VX IT and TS IT racks using the special supplied plug-%-play fastener. Robust aluminium housing with permanently mounted output slots, IEC 60320/C13 or IEC 60320/C19 as well as CEE 7/3 (earthing-pin) and BS 1363 (UK), depending on the type (see below for details). The IEC C13 / C19 output slots can be protected with a lock against unintentional removal of the connectors. Unused slots can be closed with slot covers available as accessories. This precludes an unintentional overloading of individual phases and circuits. The fuse circuits and phases are colour-coded for multiphase PDU variants. A fixed-mounted connection cable with IEC C20 or CEE connector appropriate for the variant makes the PDU available for immediate deployment. Optionally, an overvoltage protection module (type3) can

be placed on the PDU at the infeed; the overvoltage protection module is equipped with arrestors that can be replaced during operation. For intelligent PDUs, the status is monitored via the network interface, the PDU basic has a floating alarm contact for monitoring the overvoltage protection.

The warranty for proper operation is 24 months.

Technical specifications basic

Input voltage range (L/N/PE): 230 VAC, 50-60Hz

input current: 16A

No. of phases: 1

Marking of phases (3-phase PDU only L1, L2, L3):

Rittal Power Pink, black, white

Number of slots type IEC 60320/C13 (total): -

Number of slots type IEC 60320/C13

(per phase/fuse): -

Number of slots type IEC 60320/C19 (total): -

Number of slots type IEC 60320/C19

(per phase/fuse): -

Number of slots type CEE 7/3 (total): 10

Number of slots type CEE 7/3 (per phase/fuse): 10

No. of circuit breakers: -

Hydraulic-magnetic protective circuit-breaker: 16 A

Connector PDU input:

EN 60309 / CEE (L+N+PE, 6h)

Length of connection cable: 3m

Connection cable type: H05-VV

No. of wires: 3

Cable cross-section: 2,5 mm²

PDU housing width: 44mm

PDU housing depth: 70mm

PDU housing height: 695mm

PDU material: Aluminium, anodised, in RAL 9005 (black),

other colours available on request

PDU mounting adaptor (VX IT / TS IT)-Mounting options:

Frame+Zero-Uspace+cable route, fuse monitoring

Conformity: CE

Standards:

Safety: EN 62368

EMC: EN 55022 / B

EN 61000-4-2

EN 61000-4-3

EN 61000-6-2
EN 61000-6-3
Low Voltage Directive: 2014/35/EU
EMC Directive: 2014/30/EU
MTBF (at 40°C) 100.000 hours
Protection category: IP20 (EN 60529)
Protection class: Class 1
Pollution degree: 2
Overvoltage category: II
Environmental properties: 2011/65/EU (RoHS 2), WEEE
Storage temperature: -20 °C to +70 °C
Ambient temperature: +5°C to +50°C
Ambient humidity 10 - 95% rel. humidity, non-condensing
Operating altitude (max. above mean sea level): 3000 m
Connector lock for C14 and C20 connectors:
1x (further connector locks optional - DK 7979.020)
Covers C13 (optional accessory): DK 7955.010
Covers C19 (optional accessory): DK 7955.015
Warranty: 24 months
Type: Rittal PDU basic, Model No.: DK 7979.111
PDU Basic 16A/1P CEE 10x earthing-pin