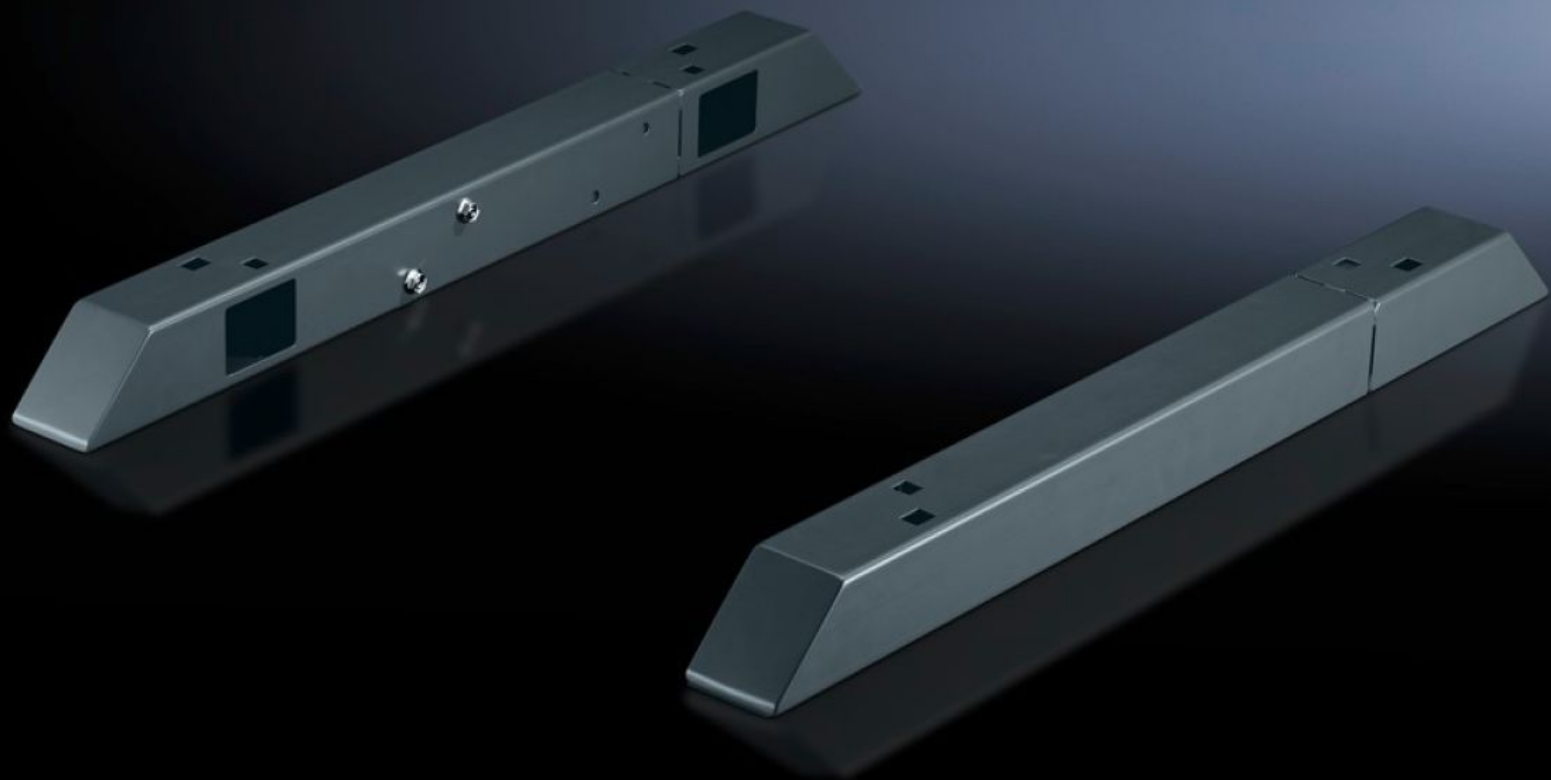


# Rittal – The System.

Faster – better – everywhere.



## TS 8601.680 Cross member

State: 14.04.2026 (Source: [rittal.com/ua-en](http://rittal.com/ua-en))

ENCLOSURES

POWER DISTRIBUTION

CLIMATE CONTROL

IT INFRASTRUCTURE

SOFTWARE & SERVICES

FRIEDHELM LOH GROUP



# TS 8601.680 - Cross member for VX, TS, VX SE, TP, PC, IW, Blue e+ chillers

To increase stability, the cross member is positioned below the base frame of the enclosure and protrudes 138 mm at the front and rear.



## Features

Model No.	TS 8601.680
Product description	To increase stability, the cross member is positioned below the base frame of the enclosure and protrudes 138 mm at the front and rear. For deeper enclosures, the rear part may be extended and screw-fastened again. For screw-fastening to the floor and enclosure with mounting hole at the sides, front and rear. The castors and levelling feet may be secured to the welded nuts M12.
Benefits	To increase stability Adjustable to the enclosure depth
Material	Sheet steel
Surface finish	Spray-finished
Colour	RAL 7015
Supply includes	1 cross member, left 1 cross member, right
Installation options	For screw-fastening to the floor and enclosure with mounting hole at the sides, front and rear For Blue e+ chillers, the cross member can be used as base/plinth component
Note	Ensure sufficient stability to prevent the enclosure from tipping over!

# Features

Dimensions	Height: 70 mm
To fit	Enclosure type: VX TS VX SE TP PC IW Depth: = 600 mm = 800 mm
Suitable for depth	600 mm 800 mm
Packs of	2 pc(s).
Net weight	10 kg
Gross weight	10.139 kg
PCF per pack (cradle-to-gate)	39.6 kg CO2 eq (Cat B)
Note on PCF category	Category B: PCF value (cradle-to-gate) based on the product weight, approximately calculated and self-declared
Customs tariff number	73269098
ETIM 9	EC000721
ECLASS 8.0	27182003
Product description	TS Cross member, adjustable, for D: 600/800 mm