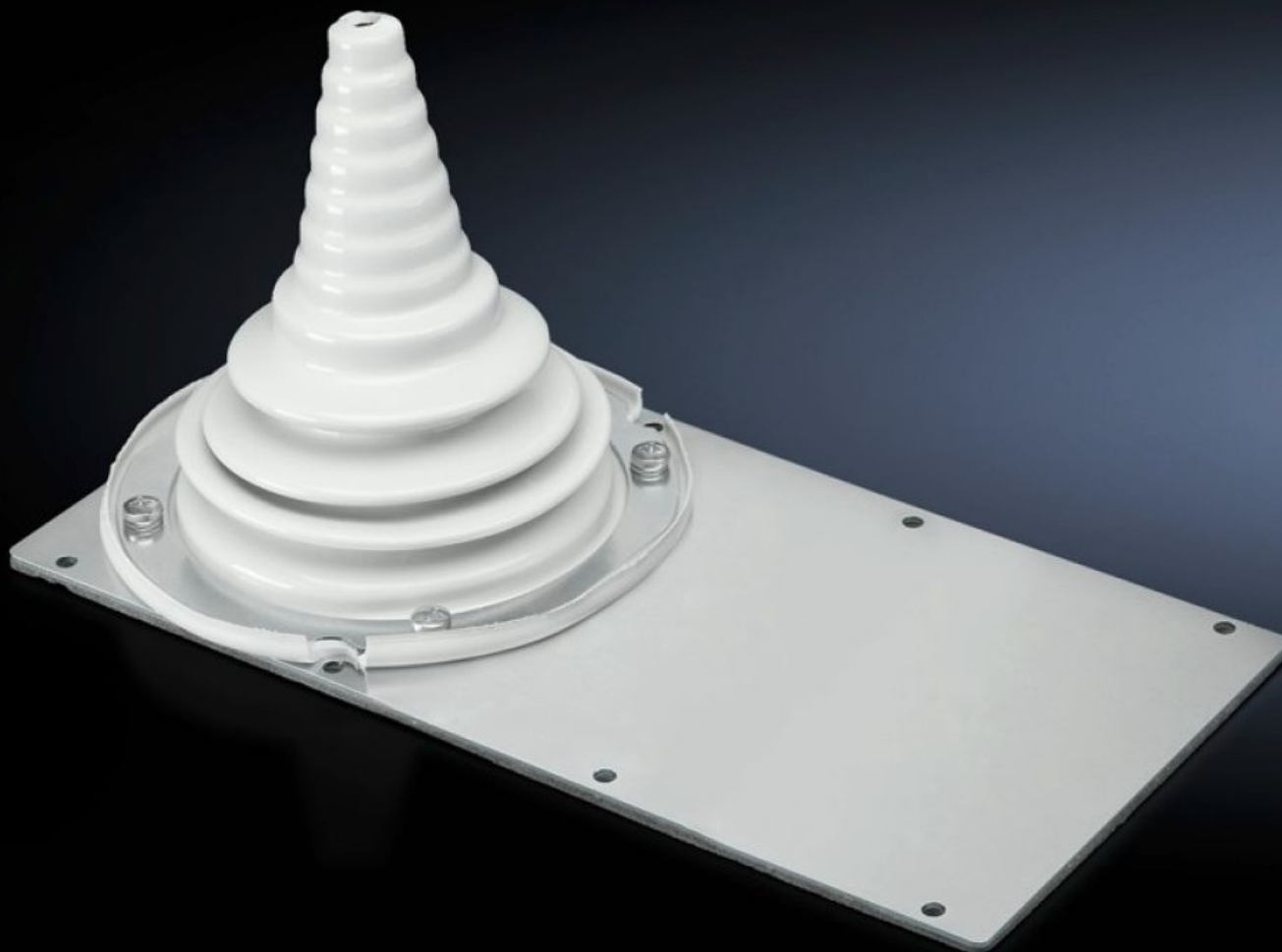


# Rittal – The System.

Faster – better – everywhere.



## SZ 8609.390 Module plates

State: 14.07.2025 (Source: [rittal.com/ua-en](https://rittal.com/ua-en))

ENCLOSURES

POWER DISTRIBUTION

CLIMATE CONTROL

IT INFRASTRUCTURE

SOFTWARE & SERVICES

FRIEDHELM LOH GROUP



# SZ 8609.390 - Module plates with cable sleeve

For cables from Ø 10 to 65 mm. The flexible grommet adapts to the cable's bending radius.

## Features

Model No.	SZ 8609.390
Design	with cable sleeve
Product description	For cables from Ø 10 to 65 mm. The flexible grommet adapts to the cable's bending radius.
Material	Sheet steel, 2 mm
Surface finish	Zinc-plated
Supply includes	Seal and assembly parts
Packs of	1 pc(s).
Net weight	1.139
Gross weight	1.16
PCF per pack (cradle-to-gate)	4.3 kg CO2 eq (Cat B)
Note on PCF category	Category B: PCF value (cradle-to-gate) based on the product weight, approximately calculated and self-declared
Customs tariff number	39173900
EAN	4028177576834
ETIM 9	EC000211
ECLASS 8.0	27142421