

# Rittal – The System.

Faster – better – everywhere.



## TS 8612.960

## Support rail 65 x 42 mm

State: 26.05.2026 (Source: [rittal.com/ua-en](http://rittal.com/ua-en))

ENCLOSURES

POWER DISTRIBUTION

CLIMATE CONTROL

IT INFRASTRUCTURE

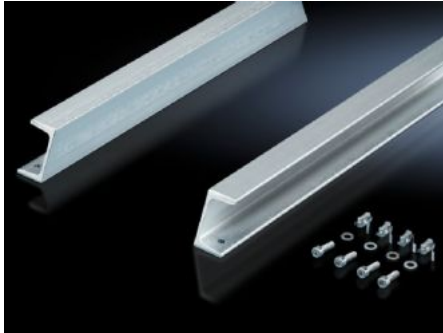
SOFTWARE & SERVICES

FRIEDHELM LOH GROUP



# TS 8612.960 - Support rail 65 x 42 mm for VX, TS, VX SE

For heavy installed equipment such as base isolators or transformers.



## Features

Model No.	TS 8612.960
Product description	For heavy installed equipment such as base isolators or transformers.
Material	Steel
Surface finish	Zinc-plated
Supply includes	Assembly parts
Installation options	On the inner mounting level of the VX enclosure section In VX SE on the inner mounting level, on the enclosure section in conjunction with adaptor rail VX
To fit	Enclosure type: VX TS VX SE Width: = 600 mm
Packs of	2 pc(s).
Net weight	7.382 kg
Gross weight	7.77 kg
PCF per pack (cradle-to-gate)	28.54 kg CO2 eq (Cat B)
Note on PCF category	Category B: PCF value (cradle-to-gate) based on the product weight, approximately calculated and self-declared
Customs tariff number	73269098

# Features

---

ETIM 9	EC001285
ECLASS 8.0	27189234
Product description	TS Support rail 65 x 42 mm, for TS, SE, for W: 600 mm

---

# Approvals

---

Explanations	PCF-declaration
--------------	-----------------

---