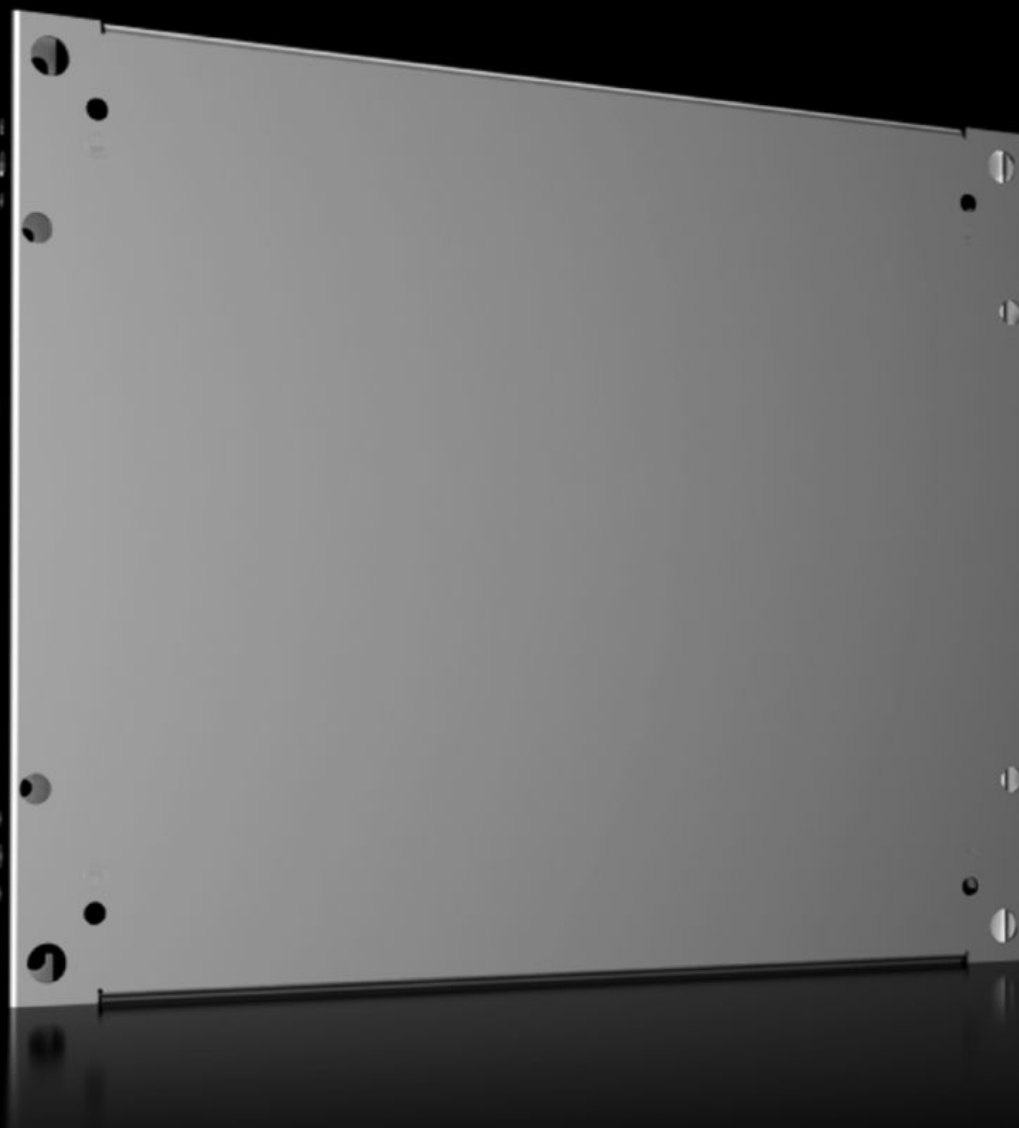
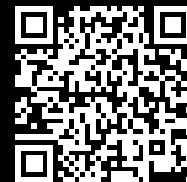


Rittal – The System.

Faster – better – everywhere.



VX 8617.520

Partial mounting plates

State: 11.09.2025 (Source: rittal.com/ua-en)

ENCLOSURES

POWER DISTRIBUTION

CLIMATE CONTROL

IT INFRASTRUCTURE

SOFTWARE & SERVICES

FRIEDHELM LOH GROUP



VX 8617.520 - Partial mounting plates for VX, VX SE, PC, IW

To accommodate additional components inside the enclosure. Partial mounting plates can be used extremely flexibly, providing a platform for a diverse range of applications.

Features

Model No.	VX 8617.520
Product description	To accommodate additional components inside the enclosure. Partial mounting plates can be used extremely flexibly, providing a platform for a diverse range of applications.
Material	Sheet steel, 2.5 mm
Surface finish	Zinc-plated
Supply includes	Assembly parts
To fit door width	600 mm
Installation options	<p>For optional installation either upright as a vertical mounting surface, or flat as a horizontal base.</p> <p>Attach directly onto the enclosure section</p> <p>With a set forward configuration, attachment is via punched sections with mounting flanges at any mounting level in the enclosure</p> <p>For multi-level installation one behind the other, partial mounting plates may be vertically hinged, via hinge attachment, to allow rapid access to the levels behind.</p>
Note	Adaptor rail VX is required for installing in VX SE, PC, IW
Dimensions	Width: 500 mm Depth: 400 mm
To fit	Enclosure type: VX VX SE PC Width: = 600 mm Depth: = 500 mm = 600 mm

Features

Packs of	1 pc(s).
Net weight	4.95
Gross weight	5.66
PCF per pack (cradle-to-gate)	21.6 kg CO2 eq (Cat B)
Note on PCF category	Category B: PCF value (cradle-to-gate) based on the product weight, approximately calculated and self-declared
Customs tariff number	94039910
EAN	4028177919372
ETIM 9	EC000213
ECLASS 8.0	27409216