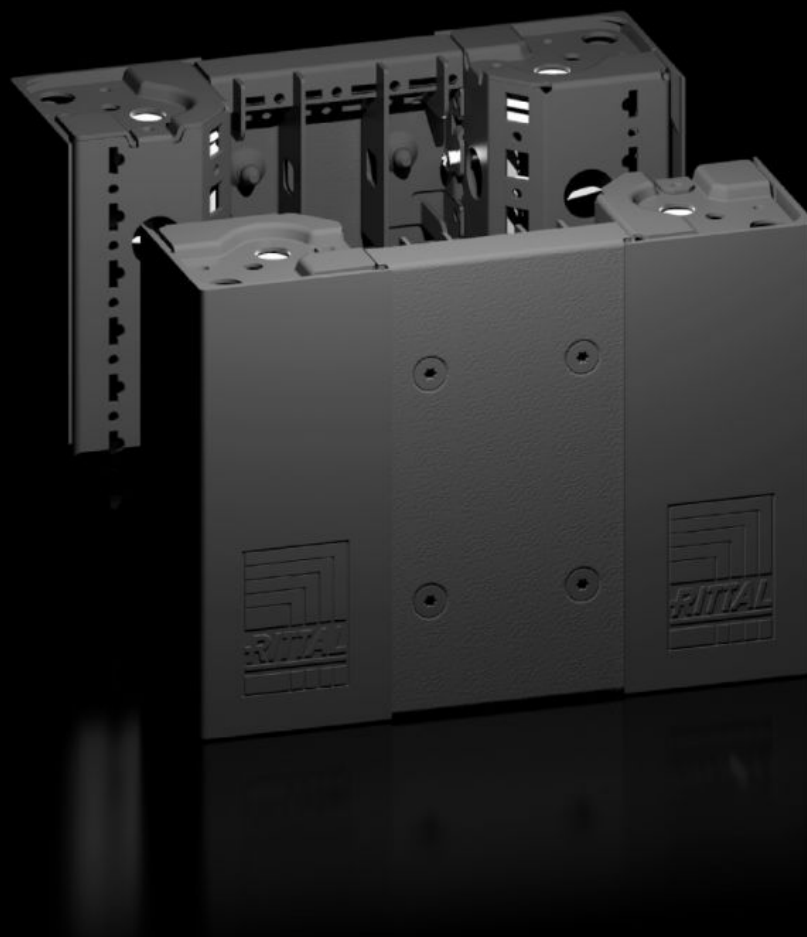
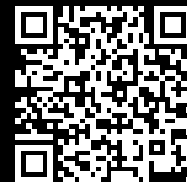


# Rittal – The System.

Faster – better – everywhere.



## VX 8640.020

Base/plinth corner piece with base/  
plinth trim panels, front and rear,  
200 mm

State: 23.08.2025 (Source: [rittal.com/ua-en](http://rittal.com/ua-en))

ENCLOSURES

POWER DISTRIBUTION

CLIMATE CONTROL

IT INFRASTRUCTURE

SOFTWARE & SERVICES

FRIEDHELM LOH GROUP



# VX 8640.020 - Base/plinth corner piece with base/plinth trim panels, front and rear, 200 mm for VX, VX IT, VX SE, TE, TS, TS IT, TP, PC, IW

Heavy-duty base/plinth corner pieces with moulded self-positioning to the enclosure, may be used with or without trim panels depending on the application. Large openings in the base/plinth corner piece for optimum access to the screw-fastening point, may be concealed with a plastic corner and baying cover.

## Features

|                       |   |
|-----------------------|---|
| Model No.             | VX 8640.020   |
| Product description   | Heavy-duty base/plinth corner pieces with moulded self-positioning to the enclosure, may be used with or without trim panels depending on the application. Large openings in the base/plinth corner piece for optimum access to the screw-fastening point, may be concealed with a plastic corner and baying cover. |
| Material              | Base/plinth corner piece: Sheet steel<br>Base/plinth trims: Sheet steel<br>Corner and baying cover: Plastic   |
| Colour                | RAL 9005  |
| Supply includes       | 4 base/plinth corner pieces, 200 mm high<br>4 corner covers<br>1 baying cover<br>1 base/plinth trim panel, front/rear, 200 mm high<br>2 base/plinth trim panels, front/rear, 100 mm high<br>Assembly parts  |
| Note                  | Side base/plinth trim panels finish off a base/plinth unit or provide additional stabilisation between base/plinths or enable interior configuration of the base/plinth   |
| Dimensions            | Height: 200 mm  |
| To fit                | Width: = 300 mm   |
| Type rating to UL 50E | Type 1<br>Type 12   |

# Features

|                       |               |
|-----------------------|---------------|
| Weight/pack           | 5.82 kg       |
| Packs of              | 2 pc(s).      |
| Net weight            | 4.62          |
| Customs tariff number | 94039910      |
| EAN                   | 4028177958845 |
| ETIM 9                | EC000721      |
| ETIM 8                | EC000721      |
| ECLASS 8.0            | 27182003      |

# Approvals

|           |                  |
|-----------|------------------|
| Approvals | UL + C-UL - FTTA |
|-----------|------------------|