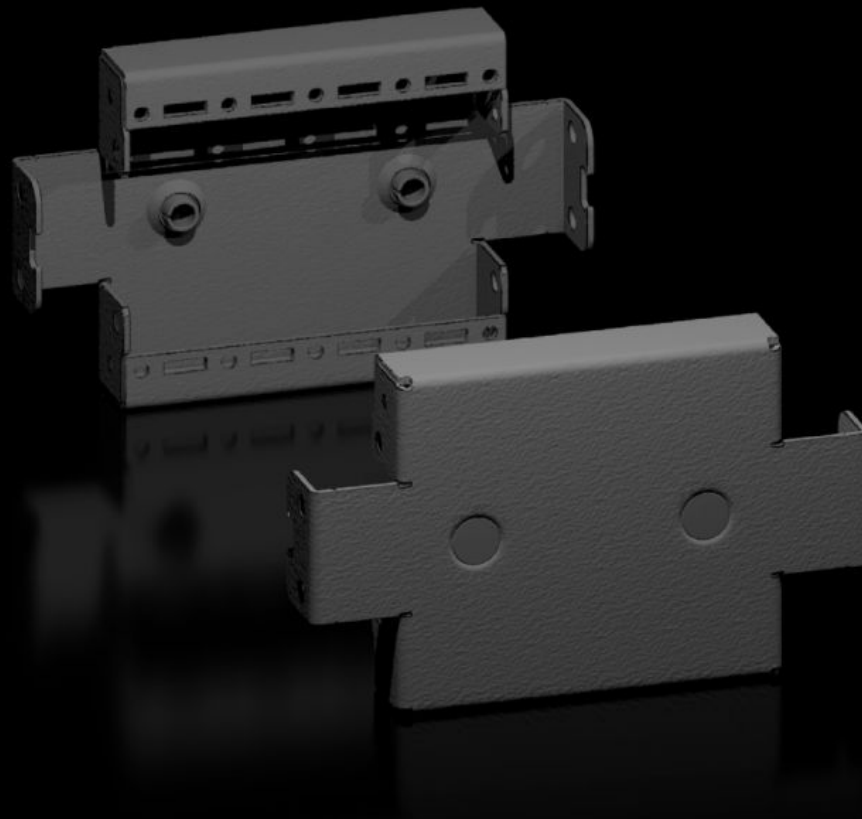


**Rittal – The System.**

Faster – better – everywhere.



**VX 8640.030**

**Base/plinth trim panels, side, 100  
mm**

State: 12.05.2026 (Source: [rittal.com/ua-en](http://rittal.com/ua-en))

ENCLOSURES

POWER DISTRIBUTION

CLIMATE CONTROL

IT INFRASTRUCTURE

SOFTWARE & SERVICES

FRIEDHELM LOH GROUP



# VX 8640.030 - Base/plinth trim panels, side, 100 mm for base/plinth system VX, sheet steel

To finish off a base/plinth unit at the sides and for additional stability, or for the interior installation of bayed base/plinths. One 200 mm high or two 100 mm high trim panels may optionally be fitted on 200 mm high base/plinths.

## Features

|                       |  |
|-----------------------|--|
| Model No.             | VX 8640.030  |
| Product description   | To finish off a base/plinth unit at the sides and for additional stability, or for the interior installation of bayed base/plinths. One 200 mm high or two 100 mm high trim panels may optionally be fitted on 200 mm high base/plinths. |
| Material              | Sheet steel  |
| Colour                | RAL 9005   |
| Supply includes       | Assembly parts   |
| Dimensions            | Height: 100 mm   |
| To fit                | Depth: = 300 mm  |
| Type rating to UL 50E | Type 1, 12   |
| Weight/pack           | 0.614 kg   |
| Packs of              | 2 pc(s).   |
| Net weight            | 0.6 kg   |
| Gross weight          | 0.614 kg   |
| Customs tariff number | 94039910   |
| ETIM 9                | EC000721   |
| ECLASS 8.0            | 27182003   |
| Product description   | VX Base/plinth trim panel, side, H: 100 mm, for D: 300 mm, sheet steel   |

# Approvals

---

Approvals

UL + C-UL - FTTA