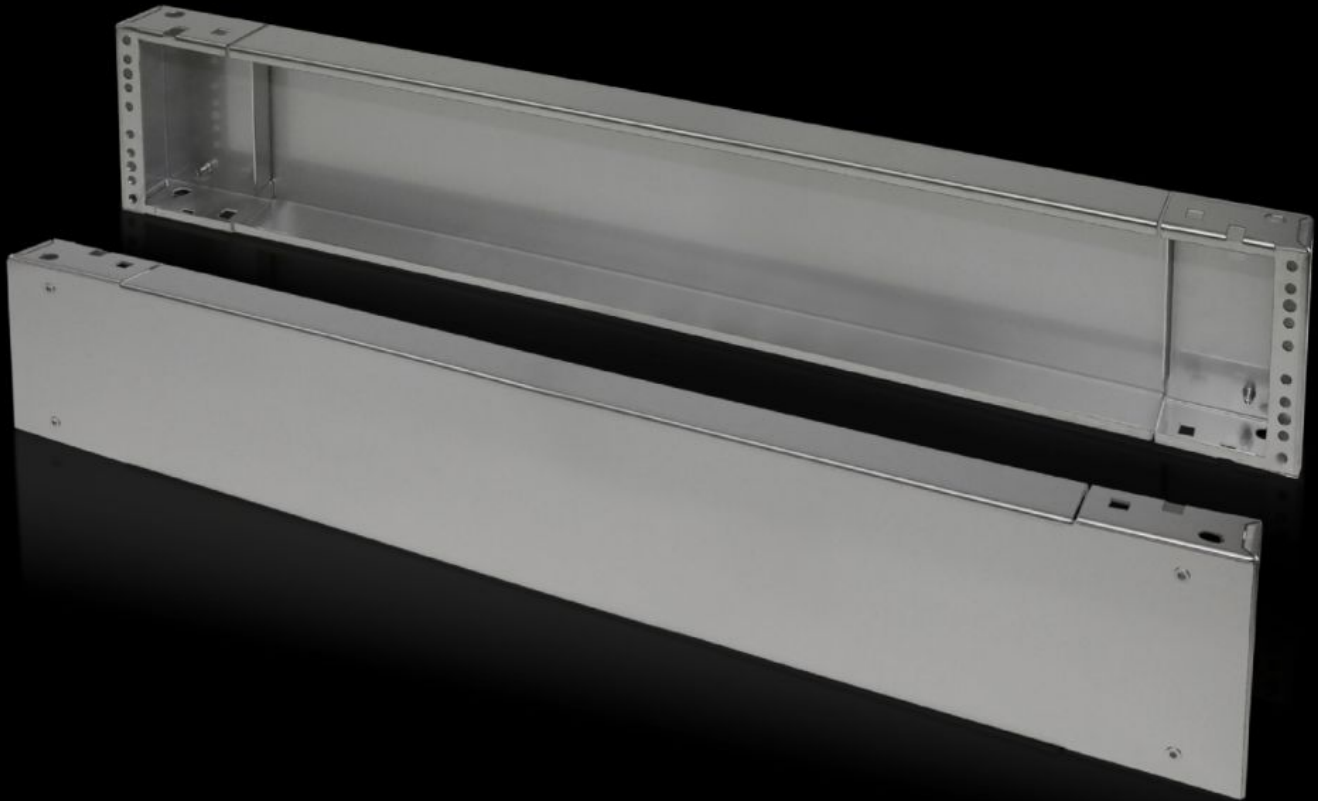


Rittal – The System.

Faster – better – everywhere.



TS 8702.200

Base/plinth components, front and rear, 200 mm

State: 23.05.2026 (Source: rittal.com/ua-en)

ENCLOSURES

POWER DISTRIBUTION

CLIMATE CONTROL

IT INFRASTRUCTURE

SOFTWARE & SERVICES

FRIEDHELM LOH GROUP



TS 8702.200 - Base/plinth components, front and rear, 200 mm Stainless steel for TS, VX SE

Base/plinth components, front and rear, stainless steel, 200 mm.

Features

Model No.	TS 8702.200
Material	Stainless steel 1.4301 (AISI 304)
Surface finish	Brushed, grain 400
Supply includes	1 trim panel front/rear 2 corner pieces with removable trim panel Assembly parts for mounting on the enclosure
Dimensions	Height: 200 mm
To fit	Enclosure type: TS: = 1,200 mm
Packs of	2 pc(s).
Net weight	14.078 kg
Gross weight	14.9 kg
Customs tariff number	94039910
ETIM 9	EC000721
ECLASS 8.0	27182003
Product description	TS Base/plinth component, front and rear, H: 200 mm, for W: 1200 mm, Stainless steel 1.4301