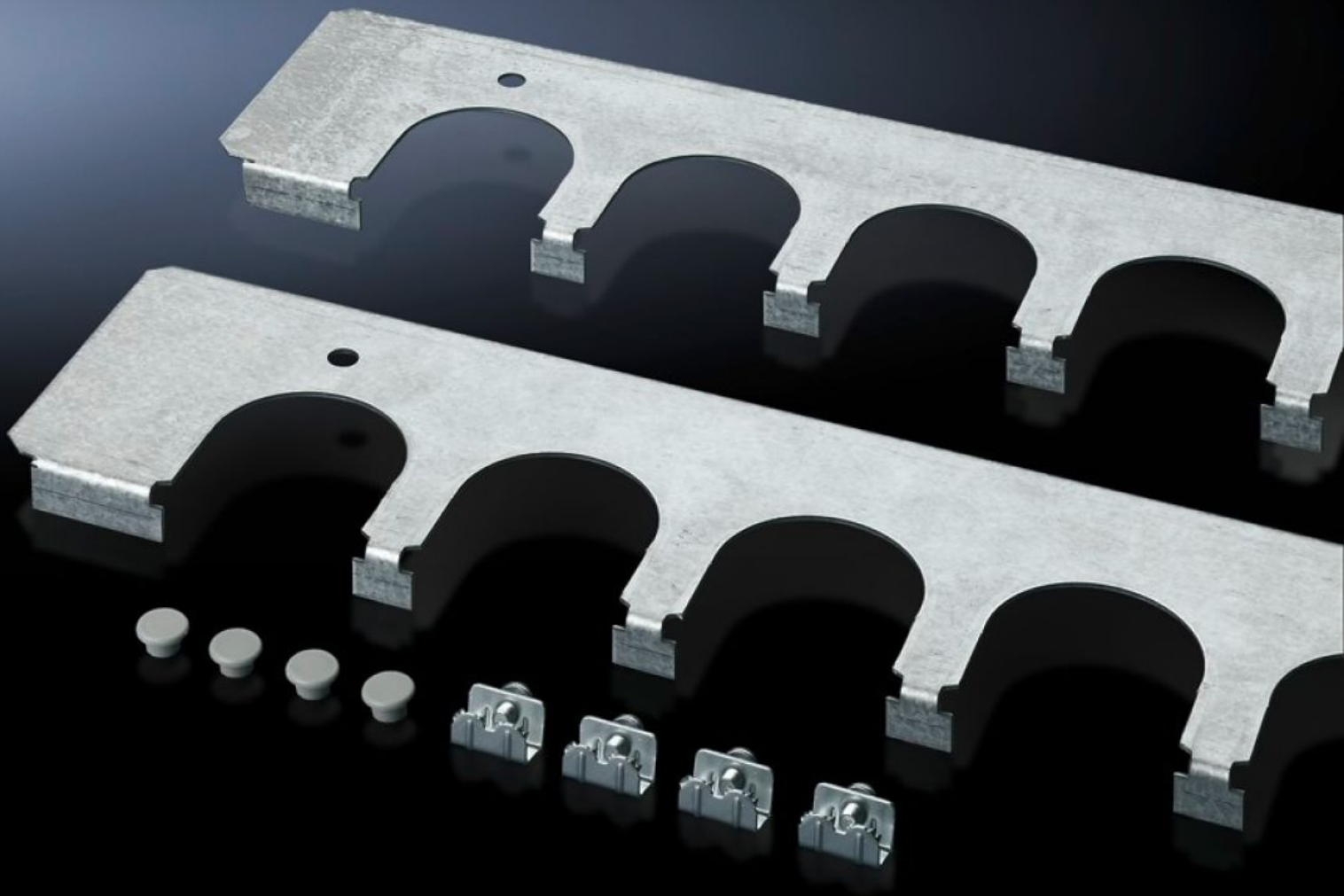


Rittal – The System.

Faster – better – everywhere.



SZ 8800.100

Cable entry plates

State: 27.07.2025 (Source: rittal.com/ua-en)

ENCLOSURES

POWER DISTRIBUTION

CLIMATE CONTROL

IT INFRASTRUCTURE

SOFTWARE & SERVICES

FRIEDHELM LOH GROUP



SZ 8800.100 - Cable entry plates for installation in TS, SE and PC enclosures

Secure cable routing in conjunction with cable entry grommets, connector grommets. Fitted instead of standard gland plates.

Features

Model No.	SZ 8800.100
Product description	Secure cable routing in conjunction with cable entry grommets, connector grommets. Fitted instead of standard gland plates.
Benefits	Particularly well-suited to cables with different cross-sections Thanks to the enclosure symmetry, where dimensions permit, cable entry plates may also be inserted in the enclosure depth, right and left, analogous to the gland plates
Material	Sheet steel
Surface finish	Zinc-plated
Supply includes	Assembly parts
Number of cut-outs	4
To fit	Enclosure type: TS: = 1,000 mm Enclosure type: SE
Packs of	4 pc(s).
Net weight	1.708
Gross weight	1.907
Customs tariff number	73269098
EAN	4028177212480
ETIM 9	EC002620
ECLASS 8.0	27189261