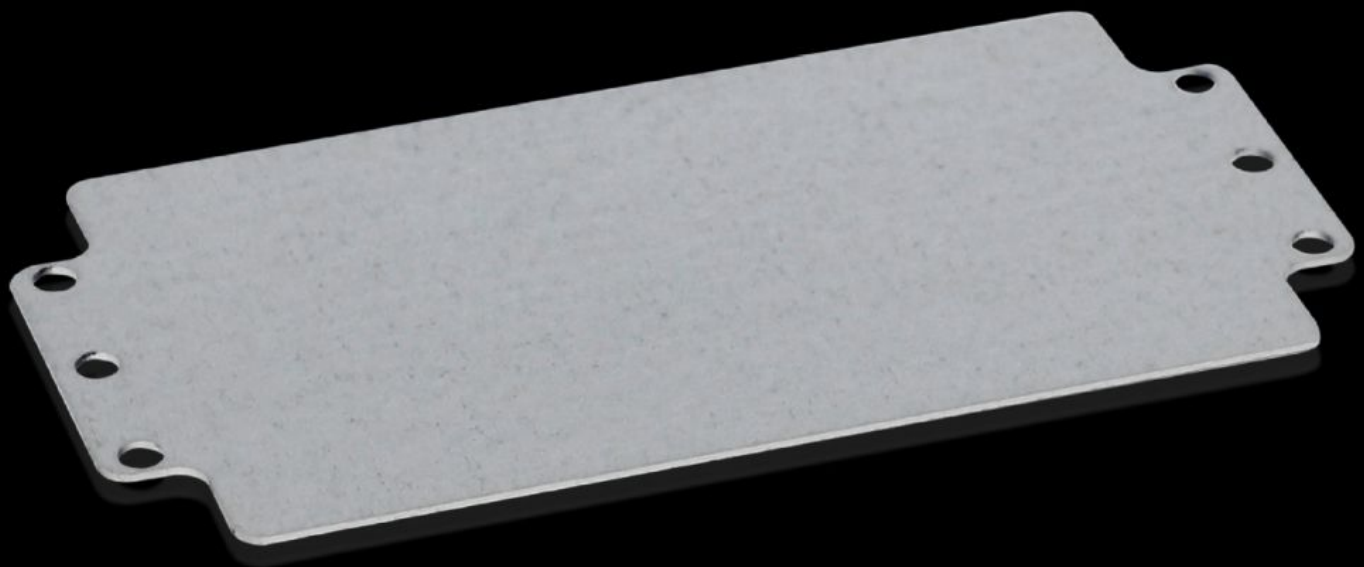


# Rittal – The System.

Faster – better – everywhere.



## GA 9110.700 Mounting plate

State: 05.04.2026 (Source: [rittal.com/ua-en](http://rittal.com/ua-en))

ENCLOSURES

POWER DISTRIBUTION

CLIMATE CONTROL

IT INFRASTRUCTURE

SOFTWARE & SERVICES

FRIEDHELM LOH GROUP



# GA 9110.700 - Mounting plate for GA

For individual interior installation, with mounting holes.



## Features

Model No.	GA 9110.700
Product description	For universal interior installation, with mounting holes.
Material	Sheet steel
Surface finish	Zinc-plated
Dimensions mounting plate (W x H)	207 mm x 107 mm
To fit	Enclosure type: GA Width: = 220 mm Height: = 120 mm
Packs of	2 pc(s).
Net weight	0.45 kg
Gross weight	0.499 kg
PCF per pack (cradle-to-gate)	1.7 kg CO2 eq (Cat B)
Note on PCF category	Category B: PCF value (cradle-to-gate) based on the product weight, approximately calculated and self-declared
Customs tariff number	94039910
ETIM 9	EC000213
ECLASS 8.0	27409216
Product description	GA Mounting plate, WH: 207x107 mm