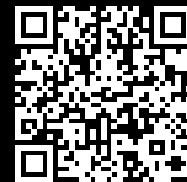


Rittal – The System.

Faster – better – everywhere.



GA 9112.700

Mounting plate

State: 01.08.2025 (Source: rittal.com/ua-en)

ENCLOSURES

POWER DISTRIBUTION

CLIMATE CONTROL

IT INFRASTRUCTURE

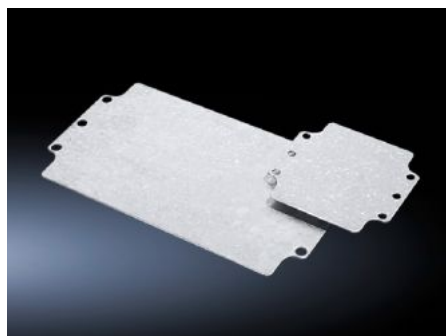
SOFTWARE & SERVICES

FRIEDHELM LOH GROUP



GA 9112.700 - Mounting plate for GA

For individual interior installation, with mounting holes.



Features

Model No.	GA 9112.700
Product description	For universal interior installation, with mounting holes.
Material	Sheet steel
Surface finish	Zinc-plated
Dimensions mounting plate (W x H)	145 mm x 142 mm
To fit	Enclosure type: GA Width: = 160 mm Height: = 160 mm
Packs of	2 pc(s).
Net weight	0.42
Gross weight	0.435
PCF per pack (cradle-to-gate)	1.7 kg CO2 eq (Cat B)
Note on PCF category	Category B: PCF value (cradle-to-gate) based on the product weight, approximately calculated and self-declared
Customs tariff number	73269098
EAN	4028177154322
ETIM 9	EC000213
ECLASS 8.0	27409216