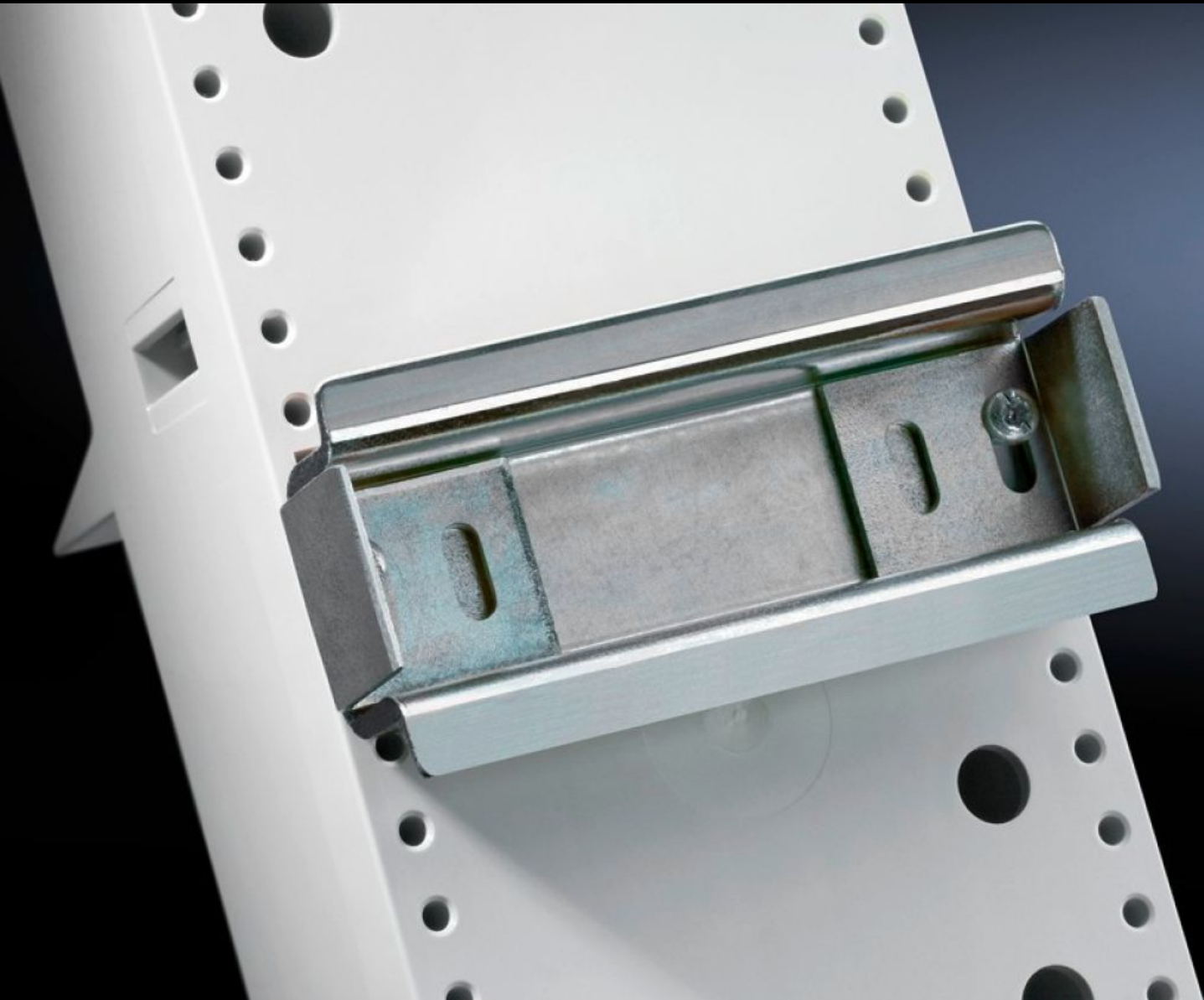


**Rittal – The System.**

Faster – better – everywhere.



**SV 9320.120**

**Support rail 35 x 15 mm**

State: 11.05.2026 (Source: [rittal.com/ua-en](http://rittal.com/ua-en))

ENCLOSURES

POWER DISTRIBUTION

CLIMATE CONTROL

IT INFRASTRUCTURE

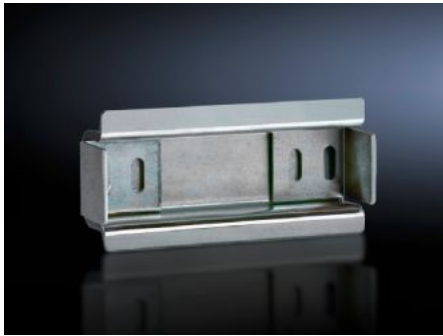
SOFTWARE & SERVICES

FRIEDHELM LOH GROUP



# SV 9320.120 - Support rail 35 x 15 mm for Mini-PLS/ circuit-breaker component adaptors

Support rail for Mini-PLS and circuit-breaker component adaptors.



## Features

Model No.	SV 9320.120
Material	Sheet steel
Surface finish	Zinc-plated
Supply includes	Assembly screws and side anti-slip guard
To fit Model No.	9342.400 9342.410 9629.000
Dimensions	Width: 72 mm
Packs of	5 pc(s).
Net weight	0.36 kg
Gross weight	0.403 kg
PCF per pack (cradle-to-gate)	1.5 kg CO2 eq (Cat B)
Note on PCF category	Category B: PCF value (cradle-to-gate) based on the product weight, approximately calculated and self-declared
Customs tariff number	73269098
ETIM 9	EC001285
ECLASS 8.0	27141143

# Features

---

Product description

SV Support rail 35x15 mm, W: 72 mm, sheet steel

## Tender text

### Support rails

For mounting Siemens air circuit-breakers S3 on SV 9320.000, SV 9320.010 and SV 9629.000.

Including assembly screws.

Width: 72 mm

Height: 15 mm