

Rittal – The System.

Faster – better – everywhere.



RX 9365.003

RiLineX baying connector

State: 25.05.2026 (Source: rittal.com/ua-en)

ENCLOSURES

POWER DISTRIBUTION

CLIMATE CONTROL

IT INFRASTRUCTURE

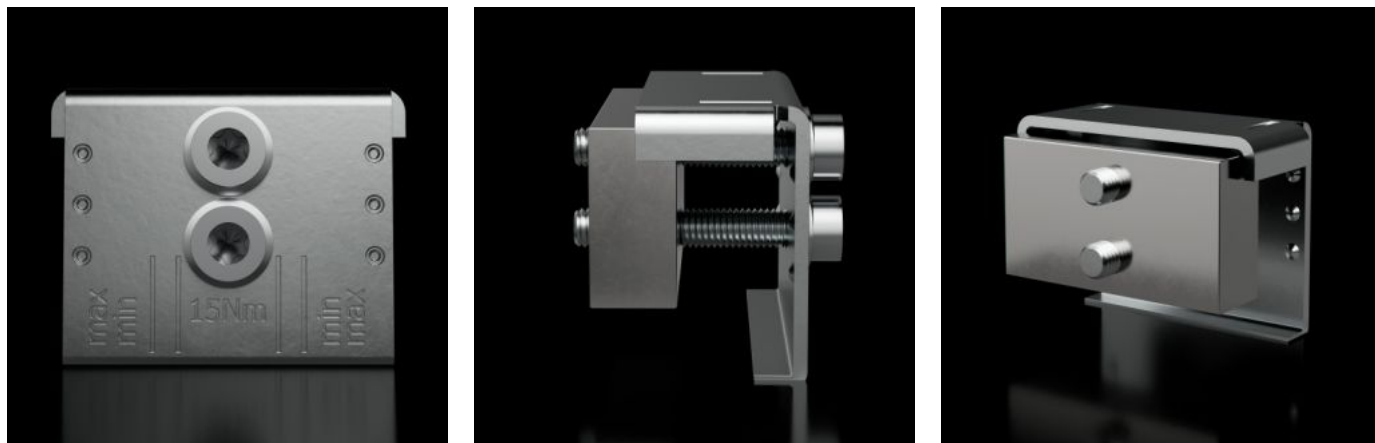
SOFTWARE & SERVICES

FRIEDHELM LOH GROUP



RX 9365.003 - RiLineX baying connector for busbars

Short busbar connector for the baying set, for connecting modular RiLineX boards. The 3-pole baying set (9360103) is additionally required.



Features

Model No.	RX 9365.003
Material	Upper part: Sheet steel, zinc-plated Contact plate: E-Cu, tin-plated
Rated current (max.)	800 A
Dimensions	Width: 45 mm
To fit busbars	15 x 5/10 20 x 5/10 30 x 5/10
Packs of	3 pc(s).
Net weight	0.564 kg
Gross weight	0.572 kg
Copper weight (kg per piece)	0.339
PCF per pack (cradle-to-gate)	3.15
Customs tariff number	73269098
ETIM 9	EC002622

Features

Product description	Short busbar connector for the baying set, for connecting modular RiLineX boards. The 3-pole baying set (9360103) is additionally required. For E-Cu 15x5-30x10 mm, L: 45 mm
---------------------	--

Approvals

Approvals	UL + C-UL (listed)
Explanations	Declaration of conformity PCF-declaration

Tender text

RiLineX Anreihverbinder für Sammelschienen (kurz)

Short busbar connector for the baying set,
for connecting modular RiLineX boards.
The baying set (9360103) is additionally required.
For voltages up to 1000 V AC and 1500 V DC.
Tested short-circuit resistance up to 65 kA.
IEC and UL approved.

Product information

Number of poles: 3

Busbar dimensions: 15/20/30 mm x 5/10 mm

Rated current max.: 550/800 A

Manufacturer: Rittal GmbH & Co. KG

Type: 9365003