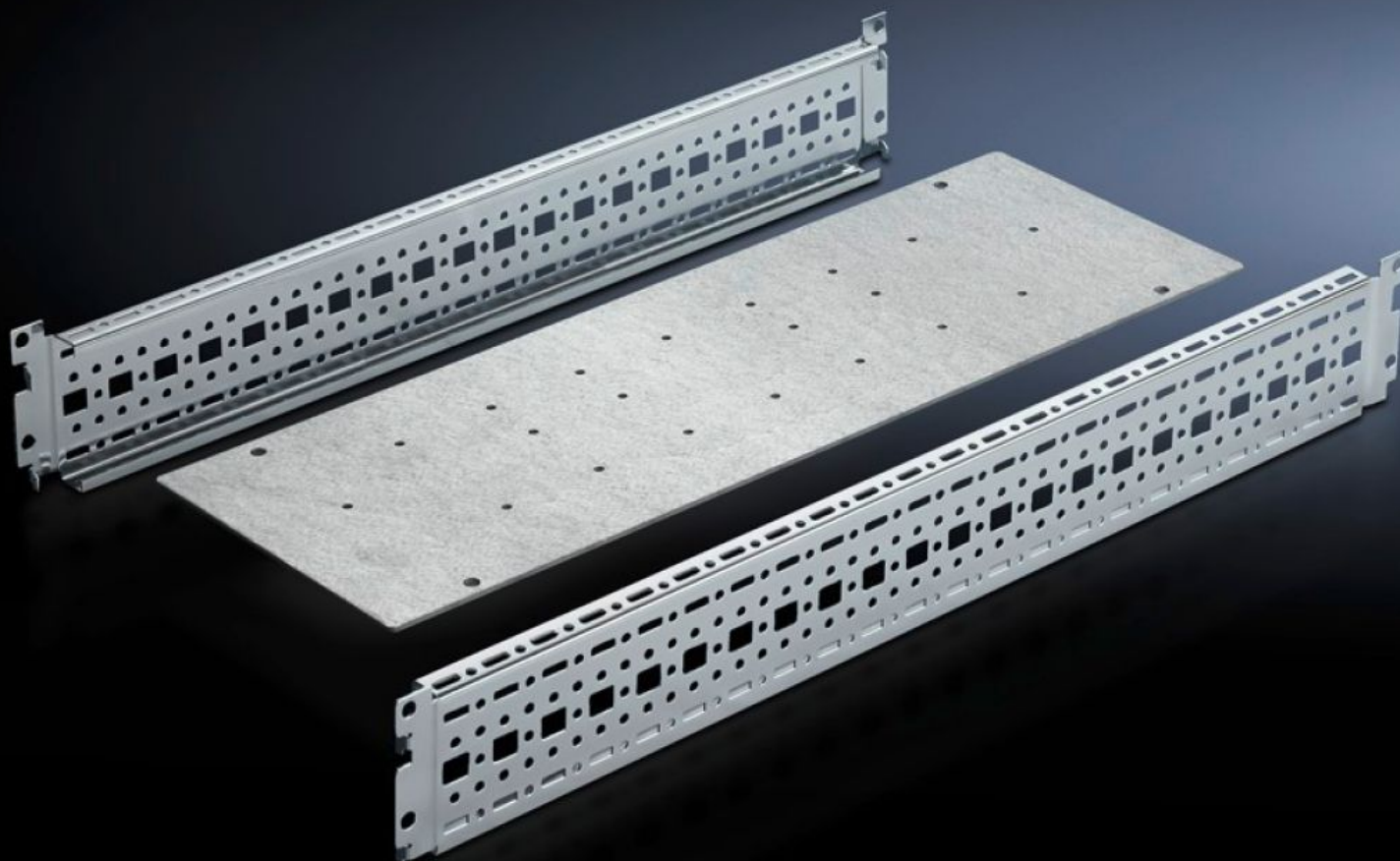


# Rittal – The System.

Faster – better – everywhere.



## SV 9674.196

### Coupling set mounting kit

State: 02.08.2025 (Source: [rittal.com/ua-en](http://rittal.com/ua-en))

ENCLOSURES

POWER DISTRIBUTION

CLIMATE CONTROL

IT INFRASTRUCTURE

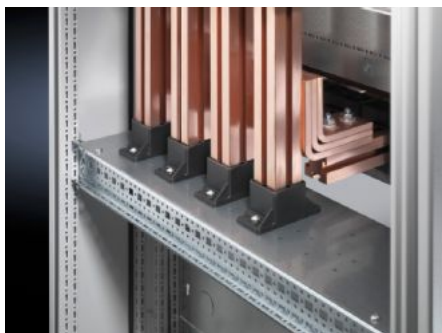
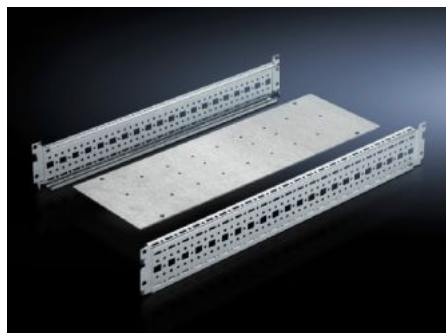
SOFTWARE & SERVICES

FRIEDHELM LOH GROUP



# SV 9674.196 - Coupling set mounting kit for busbar enclosure or riser

For busbar enclosures or risers, is used as a base support for a vertical Maxi-PLS busbar system/ Flat-PLS busbar system.



## Features

Model No.	SV 9674.196
Design	for Maxi-PLS busbar system
Product description	The mounting kit is used as a base support for a vertical Maxi-PLS busbar system/Flat-PLS busbar system.
Material	Sheet steel
Surface finish	Zinc-plated
Supply includes	Mounting plate 2 punched sections with mounting flanges Assembly parts
Note on Model No.	Only suitable for Maxi-PLS.
To fit	Width: = 200 mm Depth: = 600 mm
Packs of	1 pc(s).
Net weight	3.2
Gross weight	3.5
Customs tariff number	73269098
EAN	4028177574458

# Features

ETIM 9	EC002525
ECLASS 8.0	27400613