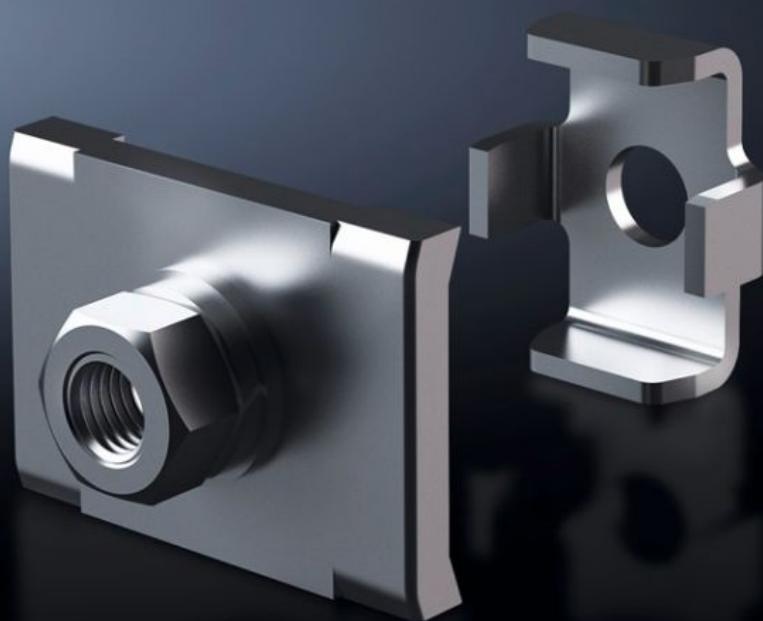


# Rittal – The System.

Faster – better – everywhere.



## SV 9676.710 Connection plate

State: 21.05.2026 (Source: [rittal.com/ua-en](http://rittal.com/ua-en))

ENCLOSURES

POWER DISTRIBUTION

CLIMATE CONTROL

IT INFRASTRUCTURE

SOFTWARE & SERVICES

FRIEDHELM LOH GROUP



# SV 9676.710 - Connection plate for ring terminals

For connecting ring terminals to a Flat-PLS busbar system with 2 – 4 bars per conductor.

## Features

Model No.	SV 9676.710
Product description	For connecting ring terminals to a busbar distributor system made from flat copper. Suitable for 10 mm bar thickness.
Material	Connection plate: E-Cu, nickel-plated Busbar claw: Stainless steel
Supply includes	Assembly parts (excluding screws)
Assembly instruction	The required screw length must be selected in line with the busbar width W, i.e. length = W + fastening measurement. Screws are not included with the supply. Busbar claw with threaded insert M10
Bars per conductor	2
Dimensions	Thread: M10
Mounting dimensions	40 mm
Packs of	1 pc(s).
Net weight	0.1 kg
Gross weight	0.12 kg
Copper weight (kg per piece)	0.07
Customs tariff number	73269098
ETIM 9	EC002270
ECLASS 8.0	27400613
Product description	SV Connection plate, with bolts M10, (Flat-PLS)

## Approvals

# Approvals

---

Approvals

ABS  
DNV  
Lloyds Register

---

Explanations

Declaration of conformity  
Declaration of conformity UK