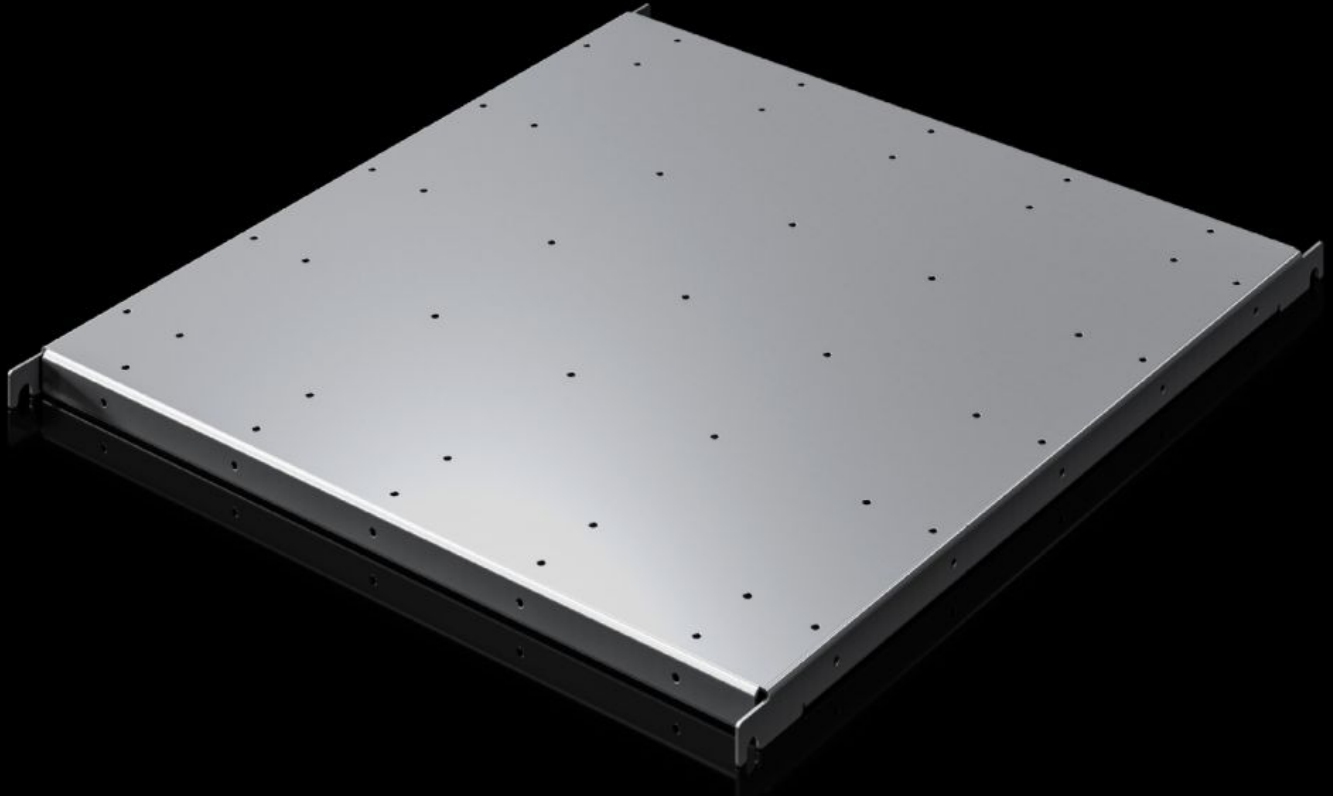


**Rittal – The System.**

Faster – better – everywhere.



**SV 9692.020**

**Component shelf, heavy duty**

State: 14.04.2026 (Source: [rittal.com/ua-en](http://rittal.com/ua-en))

ENCLOSURES

POWER DISTRIBUTION

CLIMATE CONTROL

IT INFRASTRUCTURE

SOFTWARE & SERVICES

FRIEDHELM LOH GROUP



# SV 9692.020 - Component shelf, heavy duty VX ESS

To attach e.g. monobloc batteries.

## Features

Model No.	SV 9692.020
Material	Sheet steel, zinc-plated
Supply includes	Assembly parts
Load capacity static	200 kg 2,000 N
Support area	Width: 509 mm Depth: 514 mm
To fit	Width: 600 mm Depth: 600 mm
Packs of	1 pc(s).
Net weight	7 kg
Gross weight	7.176 kg
PCF per pack (cradle-to-gate)	17.83 kg CO2 eq (Cat B)
Note on PCF category	Category B: PCF value (cradle-to-gate) based on the product weight, approximately calculated and self-declared
Customs tariff number	94039910
Product description	VX ESS component shelf, heavy-duty, WxD: 600x600 mm