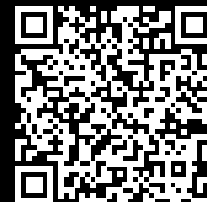


Rittal – The System.

Faster – better – everywhere.



HD 1306.600

Compact enclosure HD, single-door

State: 28/08/2025 (Source: rittal.com/uae-en)

ENCLOSURES

POWER DISTRIBUTION

CLIMATE CONTROL

IT INFRASTRUCTURE

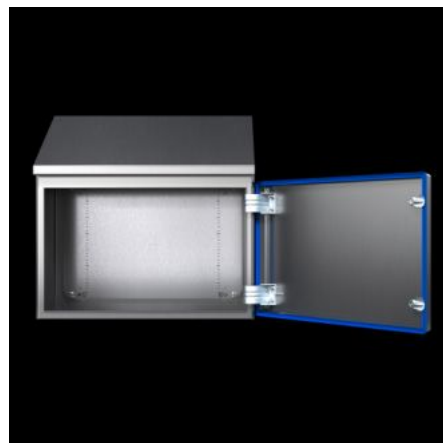
SOFTWARE & SERVICES

FRIEDHELM LOH GROUP



HD 1306.600 - Compact enclosure HD, single-door

Enclosure solution tailored to the requirements of the food and beverage industry. Roof angled forwards by 30°. Seal dyed blue to clearly distinguish it from foodstuffs



Features

| | |
|----------------------|--|
| Model No. | HD 1306.600 |
| Design | Hygienic Design enclosure |
| Product modification | From June 2020, the compact enclosure HD, single-door, comes with the new compact enclosure AX mounting plate. |
| Material | Enclosure and door: Stainless steel 1.4301 (AISI 304) Mounting plate: Sheet steel Lock insert HD: Stainless steel 1.4404 (AISI 316L) Seal: Silicone, compliant with FDA Guideline 21 CFR 177.2600 |
| Surface finish | Enclosure and door: Brushed, grain 400, peak-to-valley height < 0.8 µm Mounting plate: Zinc-plated Seal: Blue, dyed (RAL 5010) |
| Supply includes | Enclosure of all-round solid construction Door with inserted seal Door hinged on the right, may be swapped to the left Mounting plate |
| Dimensions | Width: 390 mm Height, front: 430 mm Height rear: 549 mm Depth: 210 mm |

Features

| | |
|-------------------------------------|--|
| Dimensions mounting plate (W x H) | 330 mm x 355 mm |
| Door opening angle | 125° |
| Number of locks | 2 |
| IK Code | IK08 |
| Basic material | Stainless steel 1.4301 (AISI 304) |
| IP protection category to IEC 60529 | IP 66 IP X9 |
| Protection category NEMA | NEMA 1 NEMA 3 NEMA 3X NEMA 4 NEMA 4X NEMA 12 NEMA 13 |
| Type rating to UL 50E | Type 1 Type 3 Type 3X Type 4 Type 4X Type 12 Type 13 |
| Packs of | 1 pc(s). |
| Net weight | 12.9 |
| Gross weight | 13.1 |
| Customs tariff number | 94032080 |
| EAN | 4028177567603 |
| E-Number Sweden | E3465017 |
| ETIM 9 | EC000261 |
| ETIM 8 | EC000261 |
| ECLASS 8.0 | 27180101 |

Approvals

| | |
|--------------|---|
| Approvals | UL + C-UL (listed) |
| Explanations | Declaration of conformity Declaration of conformity UK |

Tender text

Hygienic Design Compact enclosure HD, single-door

Housing:

Housing folded and welded from one piece,
closed all around, without additional gaps and dead spaces.

Enclosure including mounting plate.

Sloped roof integrated in the housing
angled forwards by 30 °.

Drip edge integrated in the roof
to protect the upper area of the door seal.

The distance between the drip edge and
the upper edge of the door allows safe cleaning.

Door:

Single-door with all-round 10 ° inclined edges,
Door hinge right, can be swapped to left. Hinges in
hygienic design within the sealing area of the door

One cam lock in hygienic design,
lock insert without depressions and gaps,
for quick and easy cleaning.

Door seal made of silicone,
in accordance with FDA guideline 21 CFR 177.2600
with a gap-free transition between door and enclosure,
free of undercuts and dead spaces.

Material:

Enclosure and door: Stainless steel 1.4301 (AISI 304)

Mounting plate: Sheet steel

Lock insert HD: Stainless steel 1.4404 (AISI 316L)

Seal: Silicone, compliant with FDA Guideline 21 CFR 177.2600

Surface finish:

Enclosure and door: Brushed, grain 400,

peak-to-valley height < 0.8 µm

Mounting plate: Zinc-plated

Seal: Blue, dyed (RAL 5010)

Protection classes and impact resistance:

Protection category IP to IEC 60 529: IP66, IPX9

Protection category to NEMA / Type Rating to UL 50E: 1, 3, 3X, 4, 4X, 1

IK-Code: IK08

Certificates:

UL, cUL

Accessories for a holistic hygienic installation:

HD wall spacers, HD levelling feet,

HD cable glands, HD cam lock

Dimensions enclosure (W x H (front) x H (rear) x D):

390 x 430 x 549 x 210 mm

Dimensions mounting plate (W x H): 330 x 355 mm

Model no.:1306.600

Manufacturer: Rittal GmbH & Co. KG