

# Rittal – The System.

Faster – better – everywhere.



## KL 1527.510 Terminal boxes KL

State: 30/06/2026 (Source: [rittal.com/uae-en](http://rittal.com/uae-en))

ENCLOSURES

POWER DISTRIBUTION

CLIMATE CONTROL

IT INFRASTRUCTURE

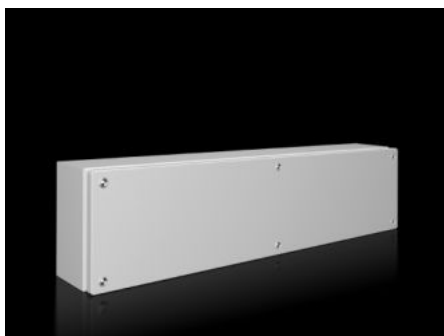
SOFTWARE & SERVICES

FRIEDHELM LOH GROUP



# KL 1527.510 - Terminal boxes KL without gland plate

Spray-finished enclosure with sheet steel cover, without gland plate Protection category IP 66.



## Features

Model No.	KL 1527.510
Material	Enclosure: Sheet steel Cover: Sheet steel, all-round foamed-in PU seal
Surface finish	Enclosure and cover: Dipcoat primed, powder-coated on the outside, textured paint
Colour	RAL 7035
Supply includes	Enclosure with cover Quick-release fastener including plastic bushes
Protection category NEMA	NEMA 4
Protection category to IEC 60 529	IP 66
IK Code	IK08
Dimensions	Width: 800 mm Height: 200 mm Depth: 120 mm
Material thickness - cover	1.25 mm
Material thickness - enclosure	1.25 mm
Basic material	Sheet steel
Packs of	1 pc(s).
Net weight	6.131 kg

# Features

---

Gross weight	6.454 kg
Customs tariff number	73269098
ETIM 9	EC000261
ETIM 8	EC000261
ECLASS 8.0	27180101
Product description	KL Terminal box, WHD: 800x200x120 mm, Sheet steel, without mounting plate, with cover, without gland plate

# Approvals

---

Approvals	Bureau Veritas DNV Lloyds Register UL + C-UL (listed)
Explanations	Manufacturer's declaration Declaration of conformity UK