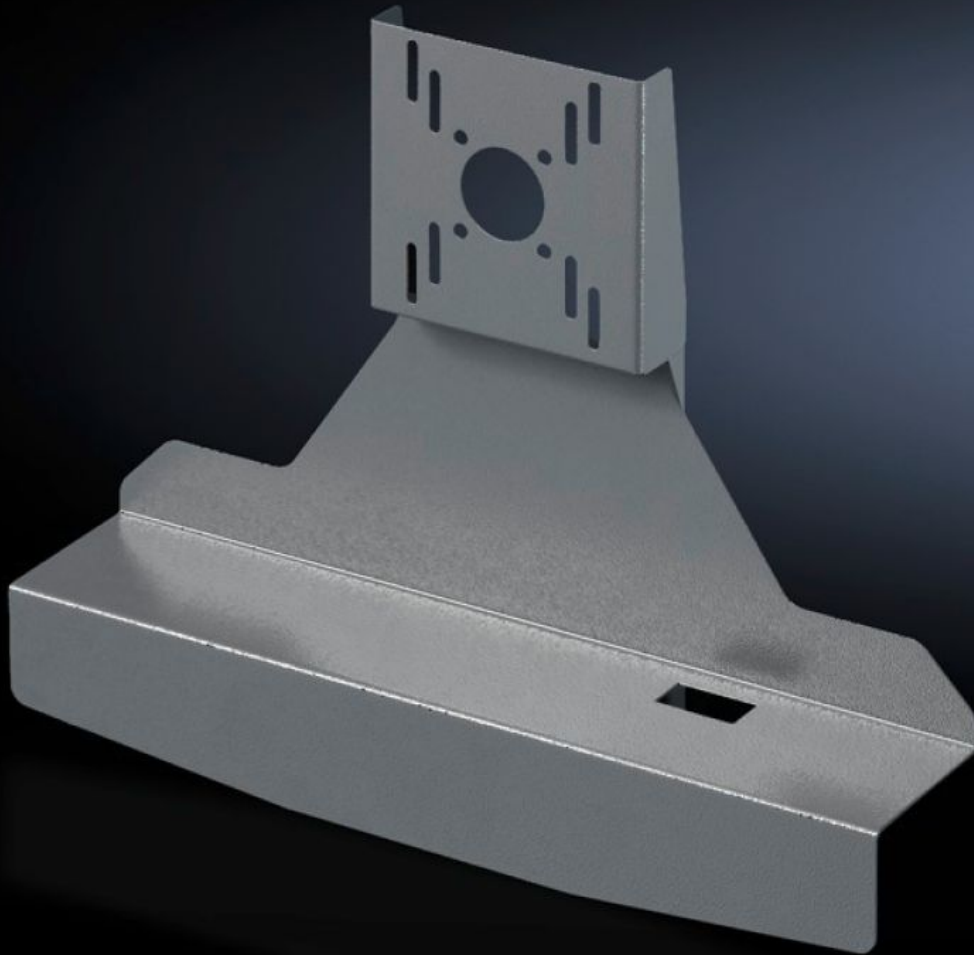
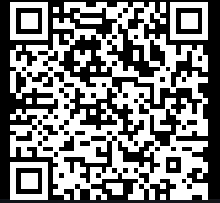


Rittal – The System.

Faster – better – everywhere.



SM 2383.030 TFT holder

State: 23/05/2026 (Source: rittal.com/uae-en)

ENCLOSURES

POWER DISTRIBUTION

CLIMATE CONTROL

IT INFRASTRUCTURE

SOFTWARE & SERVICES

FRIEDHELM LOH GROUP



SM 2383.030 - TFT holder

Suitable for mounting TFTs to enclosure attachments CP-S, CP-L and vertical support arm via vertically hinged enclosure attachment.



Features

| | |
|-------------------------------|--|
| Model No. | SM 2383.030 |
| Product description | Suitable for mounting TFTs with VESA 75/100. Adaptation up to 21" on attachment CP 40 (6501.070), attachment CP 60 for support arm connection 120 x 65 mm (6206.360), or vertical support arm via tilting adaptor +100°/-60° (6206.460). |
| Material | Sheet steel |
| Surface finish | Spray-finished |
| Colour | RAL 7024 |
| Dimensions | Width: 477 mm Height: 372 mm Depth: 110.5 mm |
| Packs of | 1 pc(s). |
| Net weight | 3.033 kg |
| Gross weight | 3.233 kg |
| PCF per pack (cradle-to-gate) | 12.2 kg CO2 eq (Cat B) |

Features

| | |
|-----------------------|--|
| Note on PCF category | Category B: PCF value (cradle-to-gate) based on the product weight, approximately calculated and self-declared |
| Customs tariff number | 83024900 |
| ETIM 9 | EC002620 |
| ETIM 8 | EC002620 |
| ECLASS 8.0 | 27189261 |
| Product description | SM TFT holder, for TFTs up to 21", WHD: 477x372x110.5 mm |
