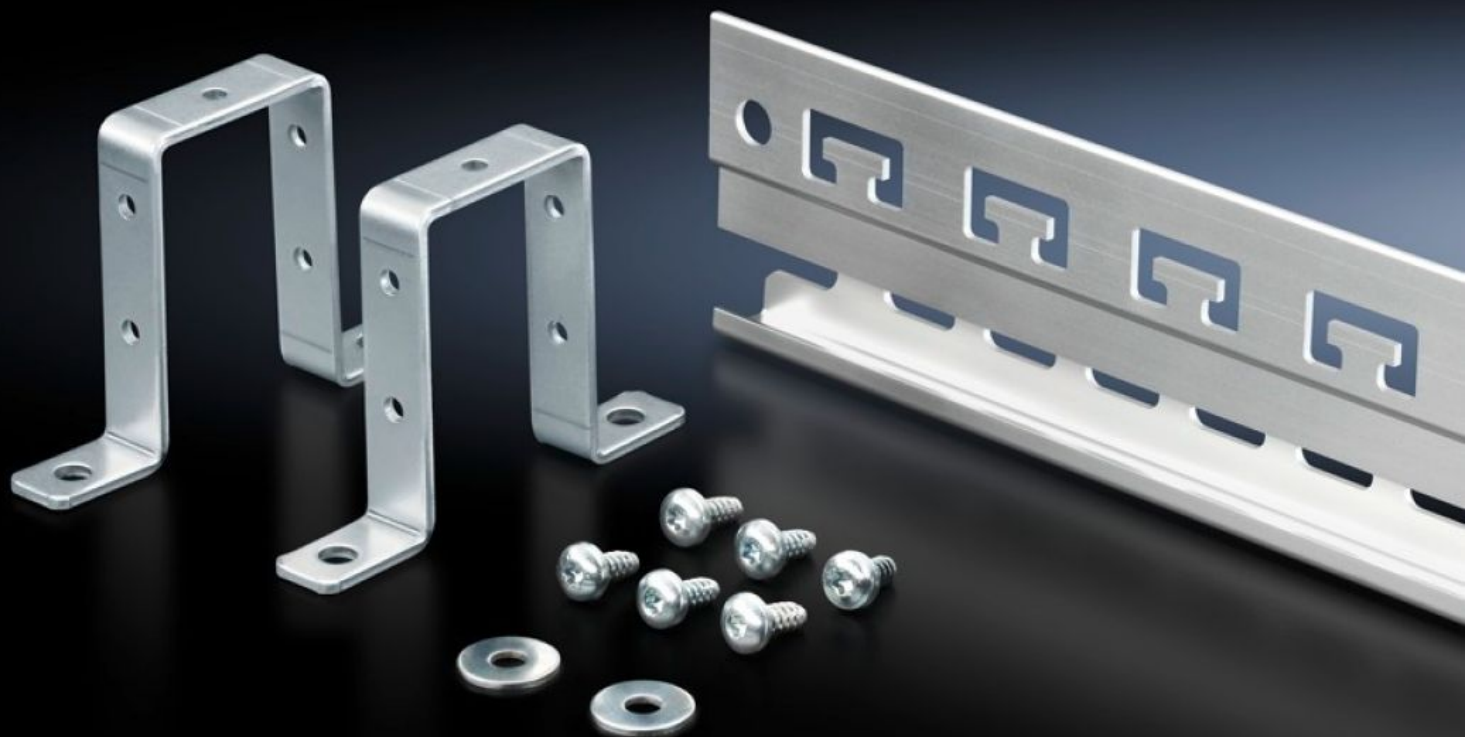
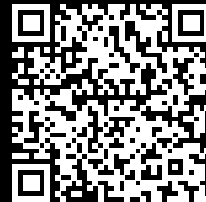


Rittal – The System.

Faster – better – everywhere.



SZ 2388.850 Rail

State: 30/08/2025 (Source: rittal.com/uae-en)

ENCLOSURES

POWER DISTRIBUTION

CLIMATE CONTROL

IT INFRASTRUCTURE

SOFTWARE & SERVICES

FRIEDHELM LOH GROUP



SZ 2388.850 - Rail for EMC shielding bracket and strain relief

Combined rail for strain relief and EMC contacting of inserted cables.



Features

| | |
|----------------------|--|
| Model No. | SZ 2388.850 |
| Design | C rail to accommodate cable clamps T-head cut-outs on a 40 mm pitch pattern for cable clamping using cable ties |
| Product description | Combined rail for strain relief and EMC contacting of inserted cables. |
| Benefits | Additional contacting on the left or right of the rail via existing holes (9 mm diameter) Prepared for tool-free mounting of EMC shielding brackets |
| Material | Extruded aluminium section |
| Surface finish | Chromium-free passivated |
| Supply includes | 1 rail 2 retaining brackets Assembly parts |
| Length | 753 mm |
| Installation options | on the horizontal/vertical enclosure section may also be fitted without a retaining bracket on a mounting plate |
| To fit | Enclosure type: VX TS Width: = 800 mm |
| Packs of | 1 pc(s). |

Features

| | |
|-----------------------|---------------|
| Net weight | 0.63 |
| Gross weight | 0.68 |
| Customs tariff number | 76042990 |
| EAN | 4028177698925 |
| ETIM 9 | EC002625 |
| ETIM 8 | EC002625 |
| ECLASS 8.0 | 27189234 |