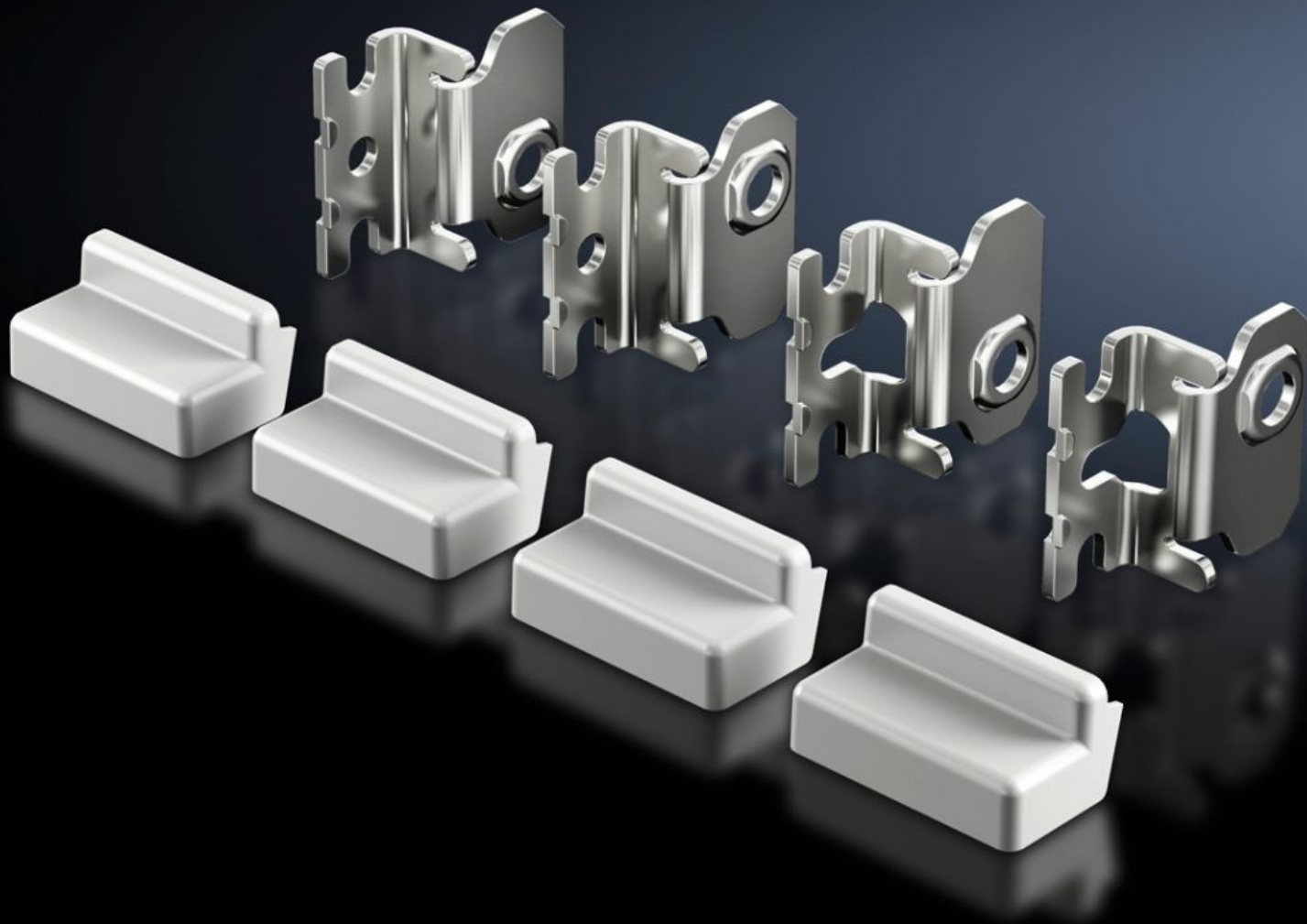
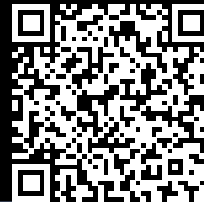


# Rittal – The System.

Faster – better – everywhere.



## SZ 2433.510 Wall mounting bracket

State: 05/09/2025 (Source: [rittal.com/uae-en](https://www.rittal.com/uae-en))

ENCLOSURES

POWER DISTRIBUTION

CLIMATE CONTROL

IT INFRASTRUCTURE

SOFTWARE & SERVICES

FRIEDHELM LOH GROUP



# SZ 2433.510 - Wall mounting bracket for AX stainless steel, KX stainless steel

For the attachment of AX and KX stainless steel enclosures.

## Features

Model No.	SZ 2433.510
Product description	For the attachment of AX and KX stainless steel enclosures.
Benefits	Simply suspend the wall-mounted bracket from a screw in the wall Different mounting positions allow the wall mounting bracket to be tailored to local conditions on site. If necessary, the support may be finished with a stylish cover cap
Material	Stainless steel 1.4404 (AISI 316L)
Supply includes	Wall mounting bracket Cover cap Assembly parts
Wall distance	20 mm
Note	For hygiene reasons, and to retain the protection category, the stainless steel enclosures do not have any drilled holes for wall mounting.
To fit	Enclosure type: AX stainless steel KX stainless steel
Type rating to UL 50E	Type 1 Type 3R Type 4 Type 4X Type 12
Packs of	4 pc(s).
Net weight	0.4
Gross weight	0.428
Customs tariff number	73269098

# Features

EAN	4028177938151
E-Number Sweden	E3465273
ETIM 9	EC002625
ETIM 8	EC002625
ECLASS 8.0	27189234

# Approvals

Approvals	UL + C-UL - FTTA
-----------	------------------