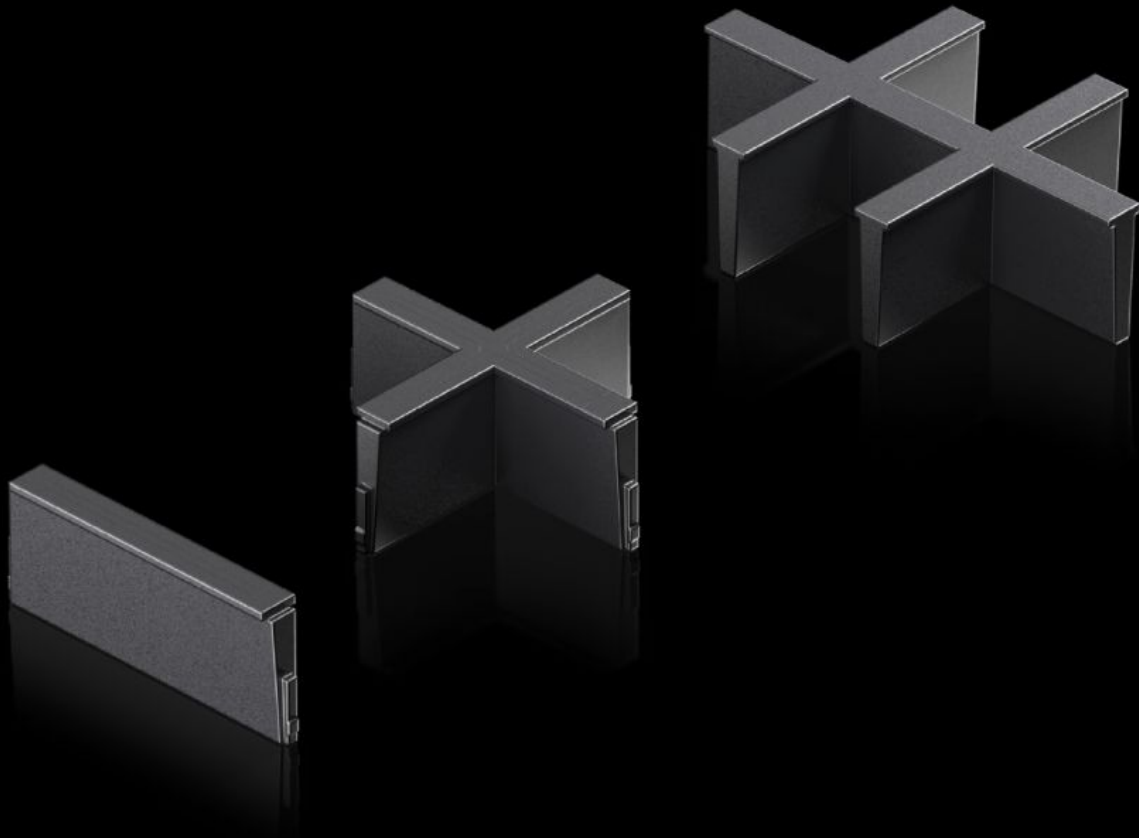
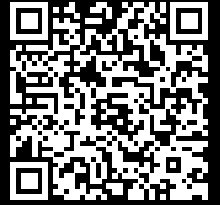


# Rittal – The System.

Faster – better – everywhere.



## AX 2582.600

## Inlay

State: 23/05/2026 (Source: [rittal.com/uae-en](http://rittal.com/uae-en))

ENCLOSURES

POWER DISTRIBUTION

CLIMATE CONTROL

IT INFRASTRUCTURE

SOFTWARE & SERVICES

FRIEDHELM LOH GROUP



# AX 2582.600 - Inlay For plastic gland plate, modular and sealing frame, modular

Individual inserts to subdivide the cut-outs in the modular plastic gland plate and the modular sealing frame.

## Features

|                       |  |
|-----------------------|--|
| Model No.             | AX 2582.600  |
| Design                | 6 slots  |
| Product description   | Individual inserts to subdivide the cut-outs in the modular plastic gland plate and the modular sealing frame. |
| Material              | Plastic  |
| Colour                | Black  |
| Packs of              | 5 pc(s).   |
| Net weight            | 0.025 kg   |
| Gross weight          | 0.049 kg   |
| Customs tariff number | 40091200   |
| ETIM 9                | EC000211   |
| ETIM 8                | EC000211   |
| ECLASS 8.0            | 27142421   |
| Product description   | SZ Inlay, for cable entry, modular, design: 6 slots  |

## Approvals

|           |                        |
|-----------|------------------------|
| Approvals | UR + C-UR (recognized) |
|-----------|------------------------|