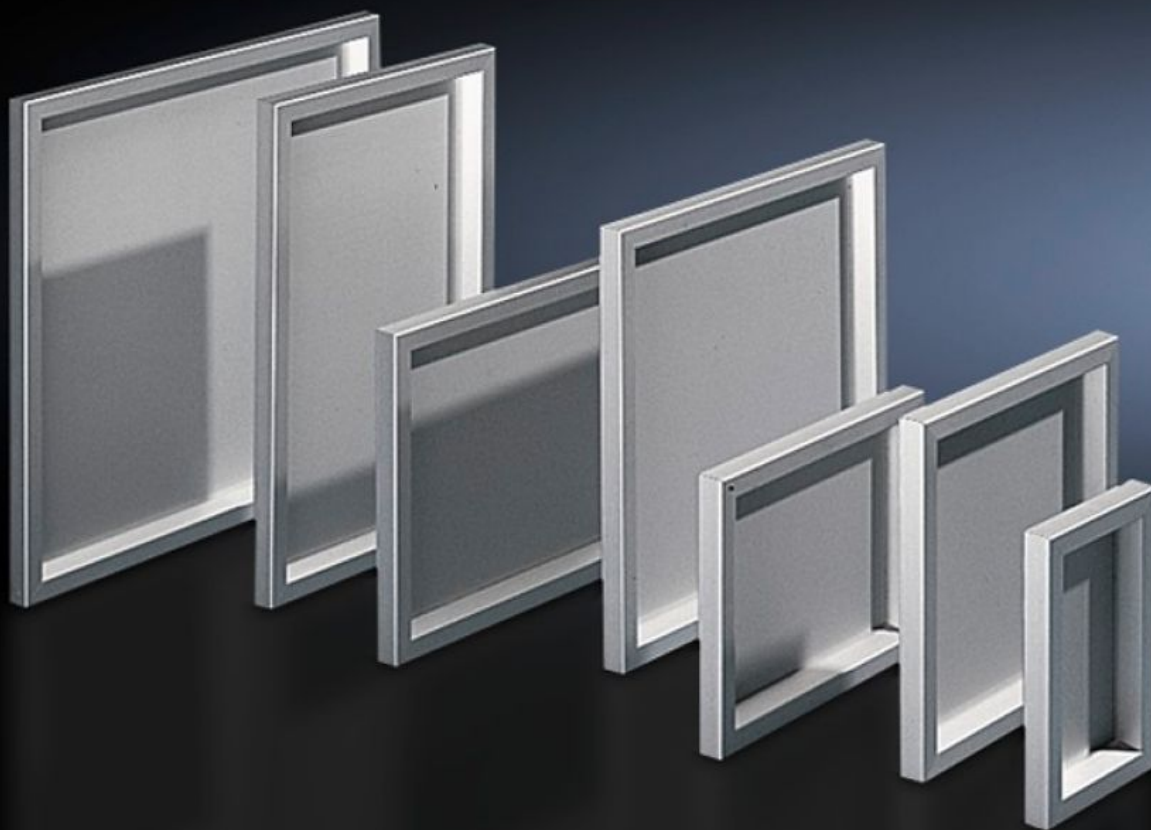


Rittal – The System.

Faster – better – everywhere.



FT 2743.000 Operating panel

State: 17/08/2025 (Source: rittal.com/uae-en)

ENCLOSURES

POWER DISTRIBUTION

CLIMATE CONTROL

IT INFRASTRUCTURE

SOFTWARE & SERVICES

FRIEDHELM LOH GROUP



FT 2743.000 - Operating panel for AE

For external mounting on an AE instead of a door and on surfaces. Frame construction with corner connectors on the inside, 3 mm aluminium plate secured from the inside and sealed against the frame.



Features

Model No.	FT 2743.000
Product description	For external mounting on an AE instead of a door and on surfaces. Frame construction with corner connectors on the inside, 3 mm aluminium plate secured from the inside and sealed against the frame.
Material	Aluminium, natural anodised
Supply includes	Aluminium frame Display panel Hinges Brackets
Protection category to IEC 60 529	IP 54
Note	When installing instead of a door, the cam lock is required
To fit	Enclosure type: AE Width: = 380 mm Height: = 600 mm
Dimensions	Width: 377 mm Height: 597 mm Depth: 34 mm

Features

Dimensions of aluminium plate	Width: 323 mm Height: 543 mm
Area available for population	Width: 307 mm Height: 527 mm
Packs of	1 pc(s).
Net weight	3.11
Gross weight	3.31
Customs tariff number	76169990
EAN	4028177031890
E-Number Sweden	E3404524
ETIM 9	EC000747
ETIM 8	EC000747
ECLASS 8.0	27182204