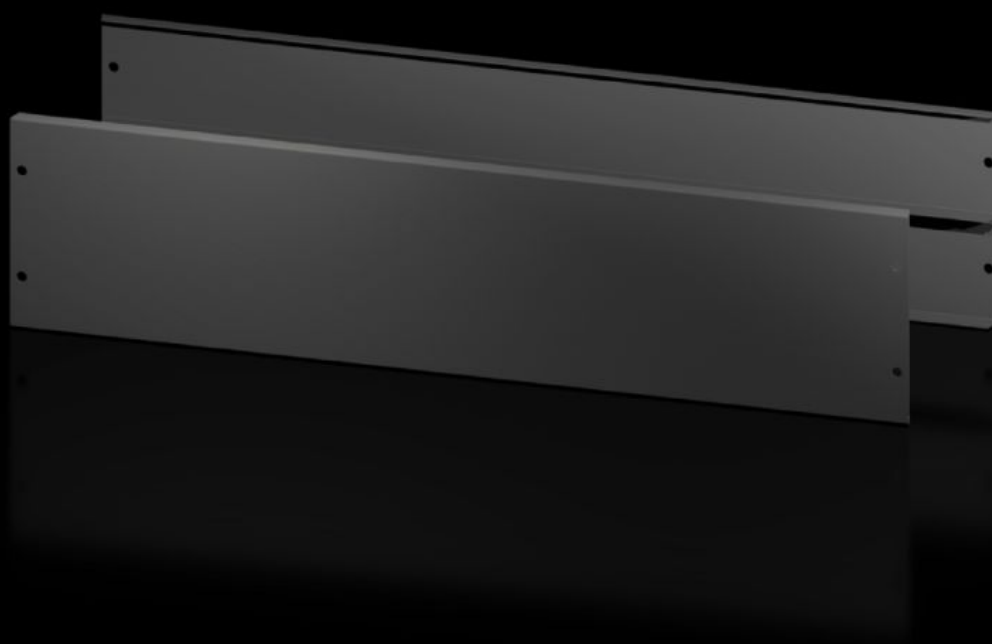


Rittal – The System.

Faster – better – everywhere.



AX 2830.102

Base/plinth trim panels, front and rear

State: 12/08/2025 (Source: rittal.com/uae-en)

ENCLOSURES

POWER DISTRIBUTION

CLIMATE CONTROL

IT INFRASTRUCTURE

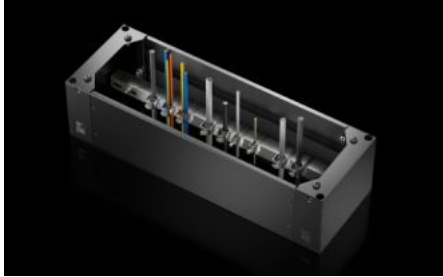
SOFTWARE & SERVICES

FRIEDHELM LOH GROUP



AX 2830.102 - Base/plinth trim panels, front and rear for AX

The base/plinth trim panels at the front and rear provide a wide opening for optimum access to the screw connection and simple cable entry.



Features

| | |
|---------------------|---|
| Model No. | AX 2830.102 |
| Design | New version |
| Product description | The base/plinth trim panels at the front and rear provide a wide opening for optimum access to the screw connection and simple cable entry. |
| Material | Base/plinth trim panel front/rear: Sheet steel |
| Colour | RAL 9005 |
| Supply includes | 2 base/plinth trim panels, front/rear |
| Note | Base/plinth elements are required at the side to finish off a base/plinth unit Components from the 1st generation base/plinth system cannot be combined with components from the 2nd generation base/plinth system |
| Dimensions | Height: 200 mm |
| To fit | Enclosure type: AX Width: = 1,000 mm |
| Packs of | 2 pc(s). |
| Net weight | 4.8 |
| Gross weight | 4.924 |

Features

| | |
|-----------------------|---------------|
| Customs tariff number | 94039910 |
| EAN | 4028177037465 |
| ETIM 9 | EC000721 |
| ETIM 8 | EC000721 |
| ECLASS 8.0 | 27182003 |

Approvals

| | |
|-----------|------------------|
| Approvals | UL + C-UL - FTTA |
|-----------|------------------|