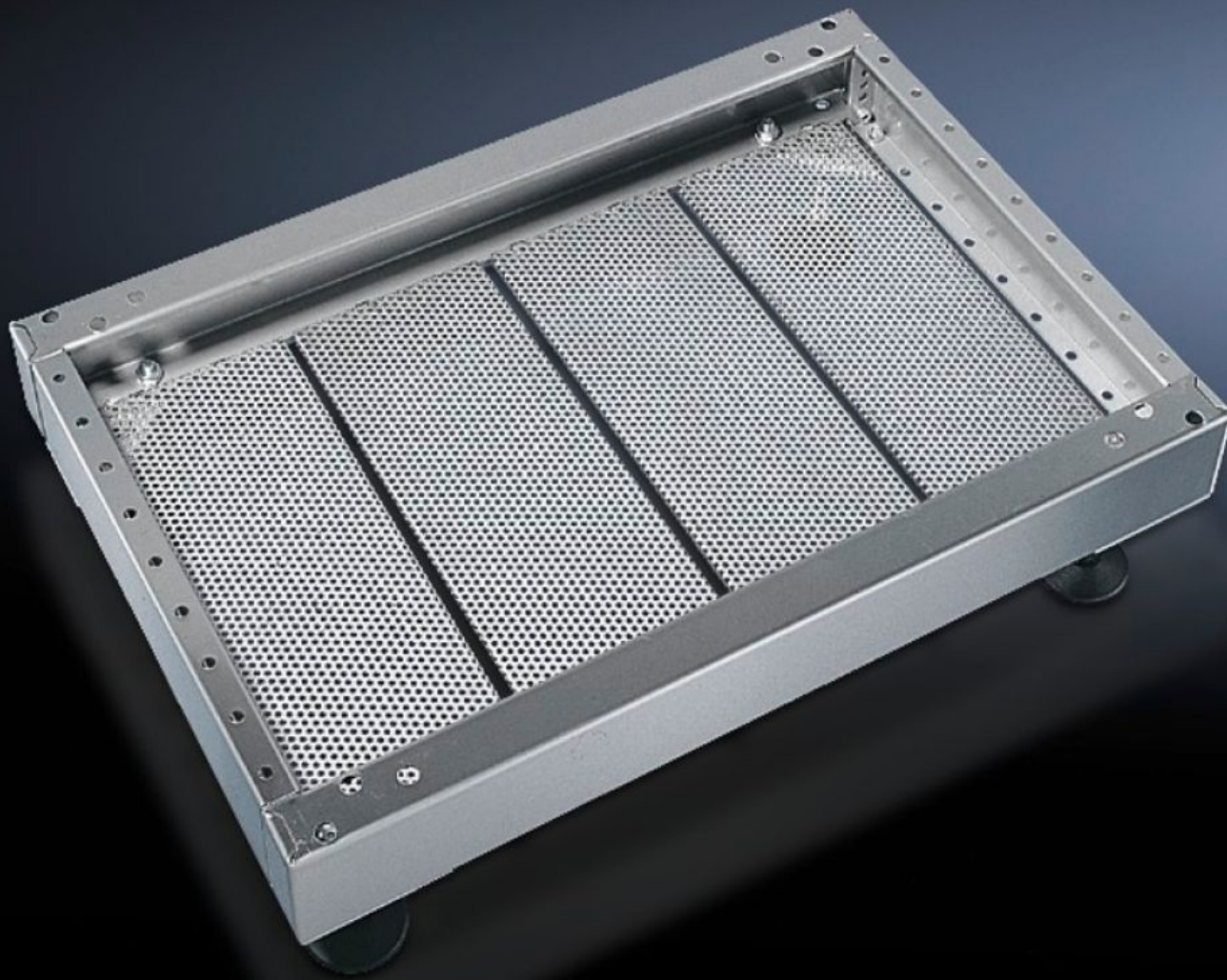


Rittal – The System.

Faster – better – everywhere.



PS 2913.000

Base/plinth trim, modular

State: 19/08/2025 (Source: rittal.com/uae-en)

ENCLOSURES

POWER DISTRIBUTION

CLIMATE CONTROL

IT INFRASTRUCTURE

SOFTWARE & SERVICES

FRIEDHELM LOH GROUP



PS 2913.000 - Base/plinth trim, modular for base/plinth TS, stainless steel and base/plinth, complete, stainless steel

For secure cable routing in the base/plinth between the floor and the enclosure.

Features

| | |
|-----------------------|--|
| Model No. | PS 2913.000 |
| Product description | For secure cable routing in the base/plinth between the floor and the enclosure. |
| Material | Stainless steel 1.4301 (AISI 304) |
| Supply includes | 4 base/plinth trim panels |
| Note | One base/plinth trim panel is needed per 200 mm base/plinth width. |
| Dimensions | Width: 175 mm |
| To fit | Depth: = 600 mm |
| Packs of | 4 pc(s). |
| Net weight | 3.928 |
| Gross weight | 4.129 |
| Customs tariff number | 73269098 |
| EAN | 4028177034419 |
| ETIM 9 | EC002620 |
| ETIM 8 | EC002620 |
| ECLASS 8.0 | 27189261 |