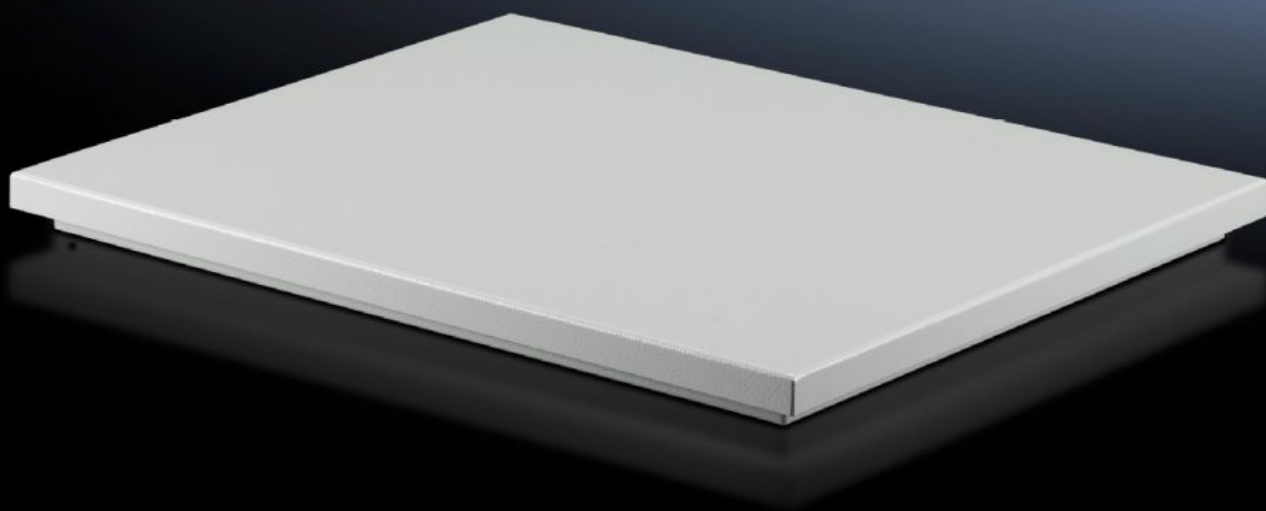
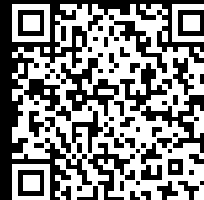


Rittal – The System.

Faster – better – everywhere.



SK 3149.820

TopTherm roof-mounted fans

State: 17/07/2025 (Source: rittal.com/uae-en)

ENCLOSURES

POWER DISTRIBUTION

CLIMATE CONTROL

IT INFRASTRUCTURE

SOFTWARE & SERVICES

FRIEDHELM LOH GROUP



SK 3149.820 - TopTherm roof-mounted fans for TS 8

The roof-mounted fans for TS fit precisely onto the cut-outs of the TopTherm roof-mounted cooling units. Also suitable for mounting on any sufficiently large roof surface. Mounting cut-outs are not compatible with successor products in the VX IT family. If reusing the roof plate in the VX IT, adaptor frame 5050.701 will be required.

Features

Model No.	SK 3149.820
Product description	The active roof-mounted fans fit precisely onto the cut-outs of the small and medium performance category of TopTherm roof-mounted cooling units.
Product modification	Mounting cut-outs are not compatible. If reusing the roof plate, adaptor frame 5050.701 is required.
Material	Sheet steel, spray-finished
Colour	RAL 7035
Supply includes	Unit ready for connection with built-in radial fan Sealing and assembly parts
Rated operating voltage	230 V, 1~, 50 Hz/60 Hz
Power consumption Pel	At 50 Hz: 170 W At 60 Hz: 225 W
Rated current max.	At 50 Hz: 0.75 A At 60 Hz: 1.1 A
Dimensions	Width: 550 mm Height: 125 mm Depth: 370 mm
Mounting cut-out	Cut-out width: 475 mm Cut-out depth: 260 mm
IP protection category to IEC 60529	IP 43
Operating temperature range	-10 °C...55 °C

Features

Noise level	At 50 Hz: 69 dB(A) At 60 Hz: 70 dB(A)
Packs of	1 pc(s).
Net weight	9.87
Gross weight	10.389
Customs tariff number	84145915
EAN	4028177387157
ECLASS 8.0	27180716

Approvals

Explanations	Declaration of conformity
--------------	---------------------------