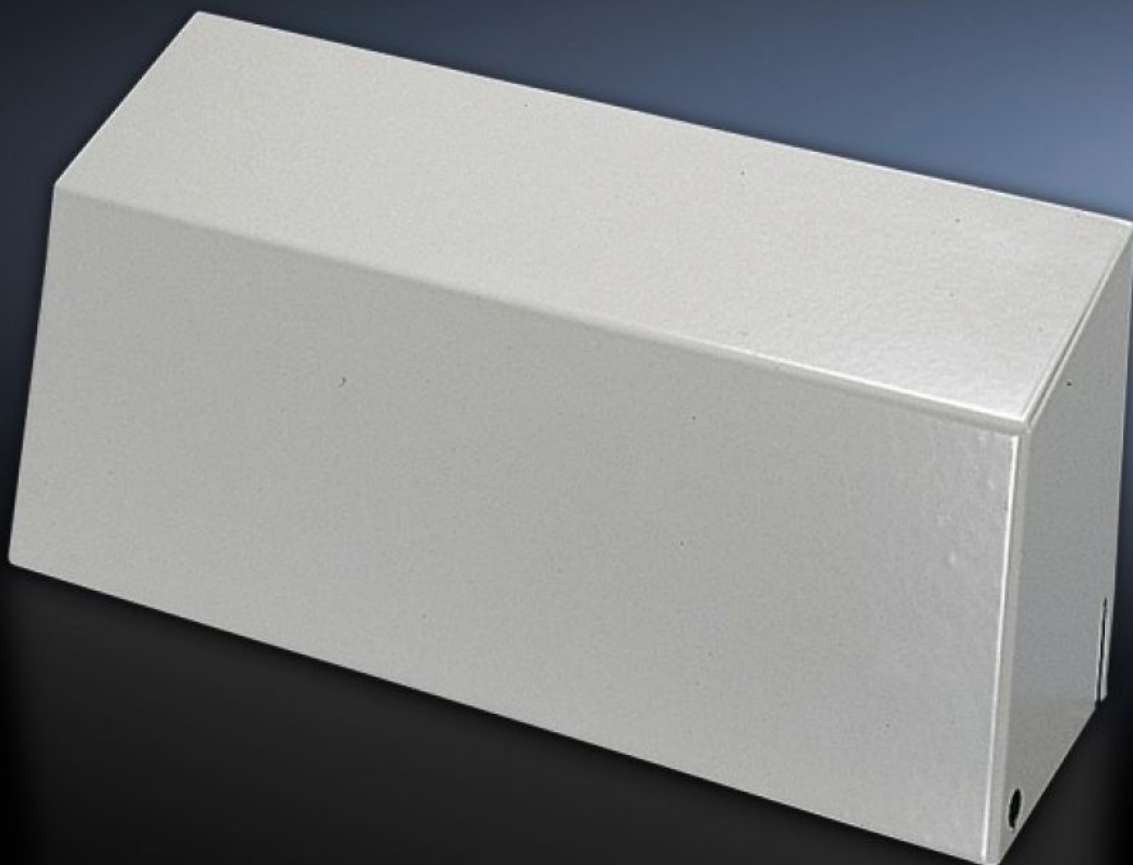
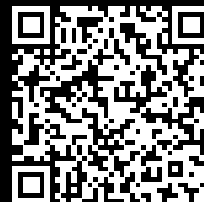


Rittal – The System.

Faster – better – everywhere.



SK 3213.310

Air diverter

State: 08/02/2026 (Source: rittal.com/uae-en)

ENCLOSURES

POWER DISTRIBUTION

CLIMATE CONTROL

IT INFRASTRUCTURE

SOFTWARE & SERVICES

FRIEDHELM LOH GROUP



SK 3213.310 - Air diverter

Targeted routing of the cold air flow to avoid hot spots in the enclosure. Particularly well-suited for densely-packed electrical components in the enclosure.

Features

Model No.	SK 3213.310
Product description	For use with wall-mounted cooling units, for targeted routing of cold air in a downward direction. Particularly well-suited for densely-packed electrical components in the lower section of the enclosure.
Benefits	Cold air is routed downwards
Material	Sheet steel
Colour	RAL 7035
To fit	TopTherm wall-mounted cooling unit Blue e
To fit Model No.	3304.xxx 3305.xxx
Packs of	1 pc(s).
Net weight	1.4
Gross weight	1.46
Customs tariff number	94039910
EAN	4028177380721
ETIM 9	EC011217
ETIM 8	EC011217
ECLASS 8.0	22410601