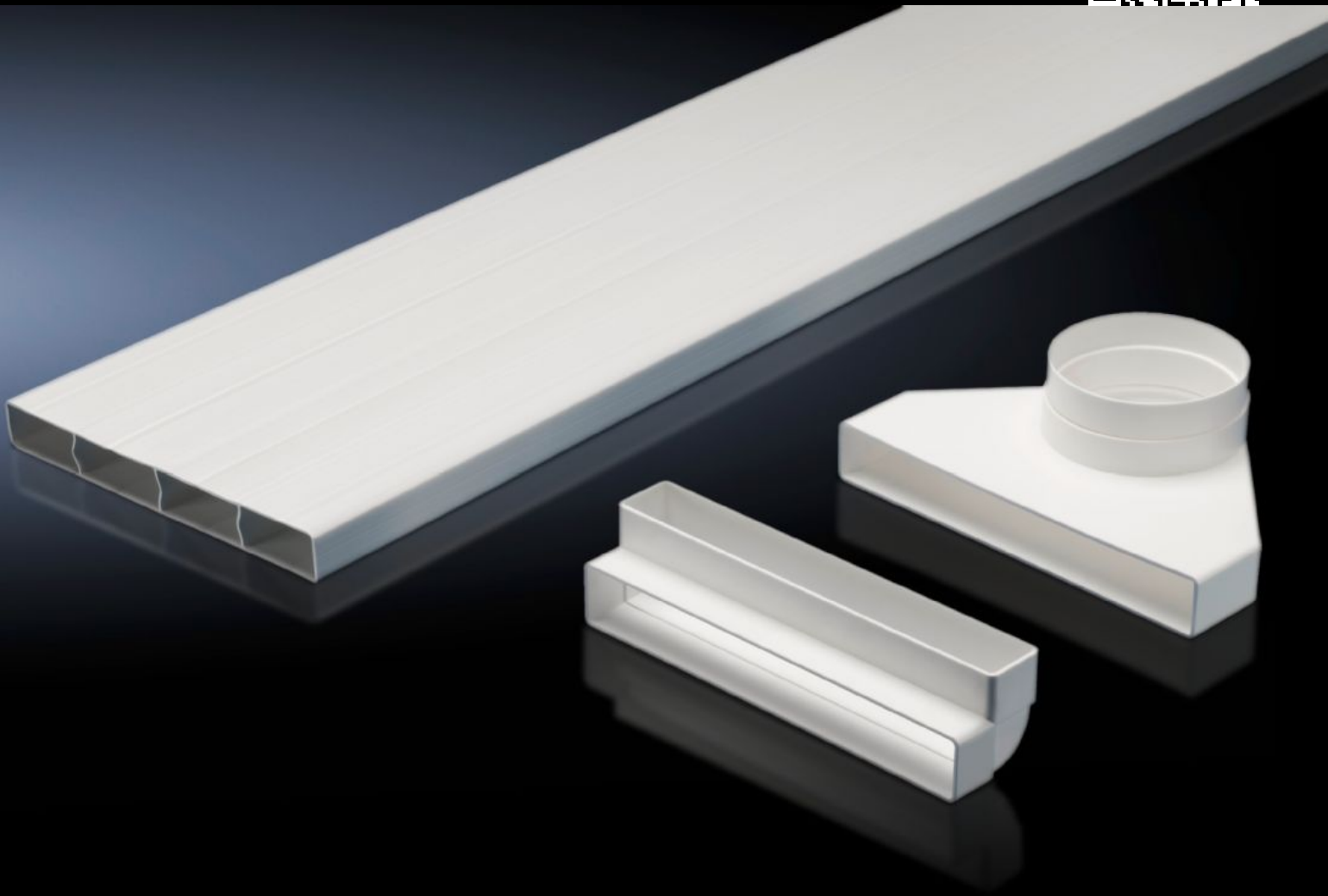


**Rittal – The System.**

Faster – better – everywhere.



# SK 3286.850

## Shallow air duct system

State: 02/07/2026 (Source: [rittal.com/uae-en](http://rittal.com/uae-en))

ENCLOSURES

POWER DISTRIBUTION

CLIMATE CONTROL

IT INFRASTRUCTURE

SOFTWARE & SERVICES

FRIEDHELM LOH GROUP



# SK 3286.850 - Shallow air duct system for roof-mounted cooling units and roof-mounted air-water heat exchangers

Cold air may be routed directly to specific areas of the enclosure using the air duct system. In this way, the risk of air short circuits due to self-ventilated installed devices is effectively eliminated. The shallow ducts can be cut to the desired length.

## Features

Model No.	SK 3286.850
Product description	Cold air may be routed directly to specific areas of the enclosure using the air duct system. The risk of air short circuits due to self-ventilated installed devices is therefore eliminated. The dimensions of the shallow duct are W x H x D 229 x 1500 x 29 mm, and can be shortened to the required length.
Applications	Suitable for enclosures with widths of 800 mm or more and depths of 600 mm or more.
Material	Flame-resistant plastic to DIN 4102/B1
Colour	RAL 7035
Supply includes	Shallow duct Adaptor Compensating piece Deflector, 90°
Assembly instruction	For devices 3359.XXX and 3382.XXX, the air duct adaptor 3286.840 is required for mounting.
Note	Do not direct cold air straight at active components. When using the ducting system, the performance of the cooling unit may be reduced, depending on the application in question. Not suitable for use in conjunction with quick-change frame.

# Features

---

To fit Model No.	3209.... 3210.... 3273.... 3383.... 3384.... 3385.... 3359.... 3382....
Packs of	1 pc(s).
Net weight	2.3 kg
Gross weight	2.46 kg
Customs tariff number	39269097
ETIM 9	EC011217
ETIM 8	EC011217
ECLASS 8.0	22410601
Product description	SK Air duct system Flat, for SK 3209/3210/3273/3383/3384/3385/3359/3382, WHD: 229 x 1500 x 29 mm