

# Rittal – The System.

Faster – better – everywhere.



## SZ 4000.058

# Attachable sloped roof

State: 17/06/2026 (Source: [rittal.com/uae-en](http://rittal.com/uae-en))

ENCLOSURES

POWER DISTRIBUTION

CLIMATE CONTROL

IT INFRASTRUCTURE

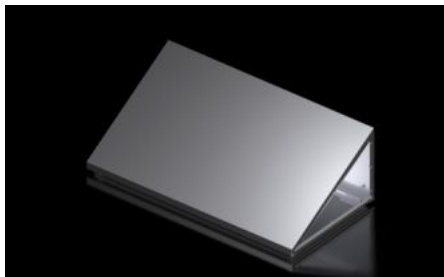
SOFTWARE & SERVICES

FRIEDHELM LOH GROUP



# SZ 4000.058 - Attachable sloped roof for VX

For retrofitting individual or bayed VX25 enclosures made from spray-finished sheet steel, with the maximum possible opening to the adjacent roof at the baying point.



## Features

Model No.	SZ 4000.058
Technical specifications	Roof projection, front: 8 mm
Material	Sheet steel
Surface finish	powder-coated
Colour	RAL 7035
Supply includes	Assembly parts and seals
Dimensions	Height, front: 35 mm
IP protection category to IEC 60529	IP 55
Protection category NEMA	NEMA 12
Note on Model No.	Please quote the complete design code on all enquiries and orders. Extended delivery times.

# Features

---

Design code number	Roof tilt: 1 = 30° (EHEDG standard) or 2 = 45° Enclosure width: ... mm (max. 1200 mm) Enclosure depth: ... mm 1 = for VX free-standing enclosure 2 = for bayed VX end enclosure, left (with T-section seal and connection accessories) 3 = for bayed VX end enclosure, right (with T-section seal and connection accessories) 4 = for bayed VX enclosure, centre (with T-section seal and connection accessories) Example: 1 - 800 - 600 - 1 (sloped attachment with 30° roof pitch - width 800 mm - depth 600 mm - for VX free-standing enclosure)
Packs of	1 pc(s).
Net weight	2 kg
Gross weight	2.1 kg
Customs tariff number	94039910

---