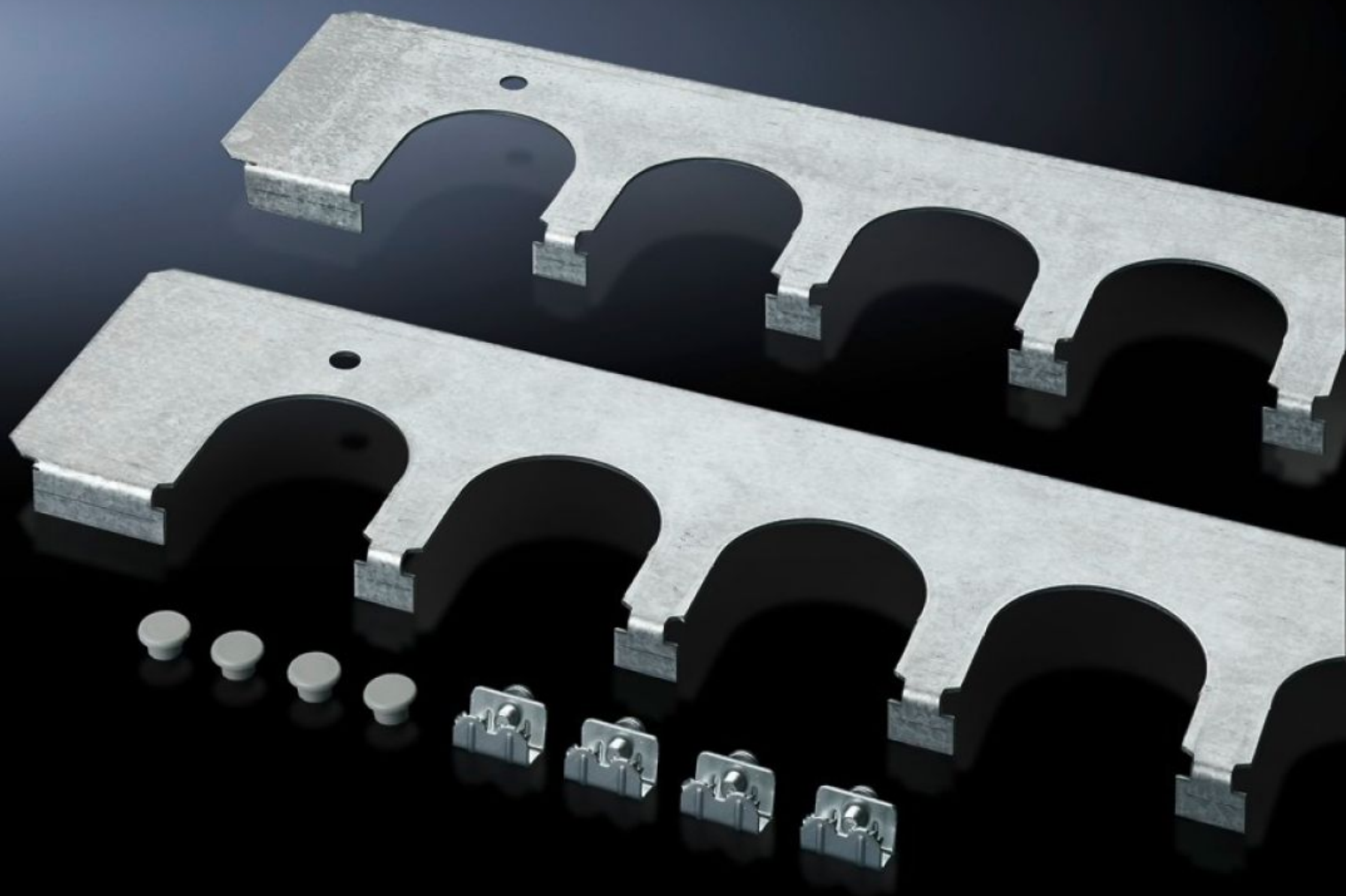
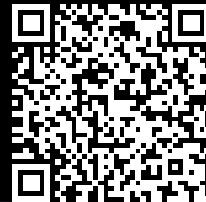


Rittal – The System.

Faster – better – everywhere.



SZ 4321.700 Cable entry plates

State: 14/07/2025 (Source: rittal.com/uae-en)

ENCLOSURES

POWER DISTRIBUTION

CLIMATE CONTROL

IT INFRASTRUCTURE

SOFTWARE & SERVICES

FRIEDHELM LOH GROUP



SZ 4321.700 - Cable entry plates for installation in TP universal consoles

Secure cable routing in conjunction with cable entry grommets, connector grommets. Fitted instead of standard gland plates.

Features

Model No.	SZ 4321.700
Product description	Secure cable routing in conjunction with cable entry grommets, connector grommets. Fitted instead of standard gland plates.
Material	Sheet steel
Surface finish	Zinc-plated
Supply includes	Compensating plate Assembly parts Compensating plate
Note on Model No.	Compensating plate
To fit	Enclosure type: TP universal console: = 800 mm
Packs of	2 pc(s).
Net weight	1.194
Gross weight	1.393
Customs tariff number	73269098
EAN	4028177098824
ECLASS 8.0	27189261