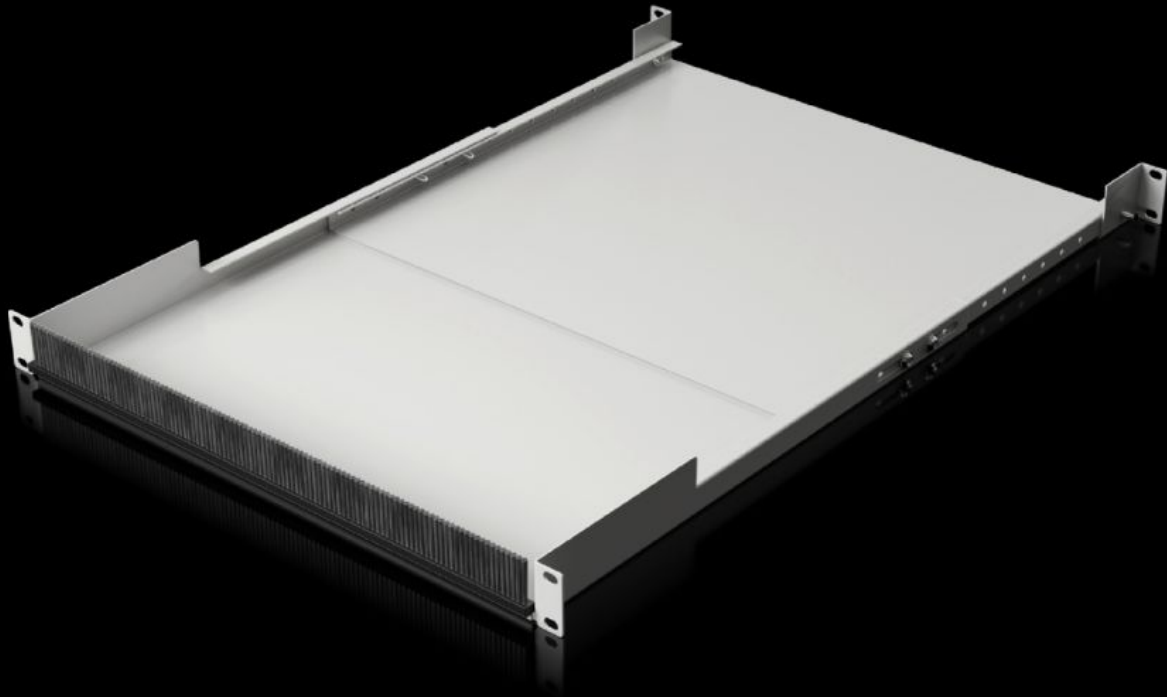


**Rittal – The System.**

Faster – better – everywhere.



**IT 5302.042**

**482.6 mm (19") cable link, depth-variable**

State: 25/06/2026 (Source: [rittal.com/uae-en](http://rittal.com/uae-en))

ENCLOSURES

POWER DISTRIBUTION

CLIMATE CONTROL

IT INFRASTRUCTURE

SOFTWARE & SERVICES

FRIEDHELM LOH GROUP



# IT 5302.042 - 482.6 mm (19") cable link, depth-variable

Within the 482.6 mm (19") mounting level, the cable link provides an integrated cable routing option between the front and rear mounting levels inside an enclosure.

## Features

|                         |  |
|-------------------------|--|
| Model No.               | IT 5302.042  |
| Product description     | A user-friendly way of creating integrated cable routing between the front and rear 482.6 mm (19") mounting levels within the enclosure.   |
| Benefits                | <p>Cable entry at the front via brush strip for thermal partitioning of the cable entry zone</p> <p>Direct cable routing between the patch level and component with rear installation, optimum cable routing with switch mounted at the rear</p> <p>Fully depth-variable with versatile, infinitely adjustable extension of the cable link</p> <p>Prevents incorrect airflow by partitioning the transition</p> <p>Open at the top for easy retrofitting, even with cables already inserted</p> <p>Cable link extendible upwards by 1 U, by using an additional cable entry panel with brush strip</p> |
| Material                | <p>Sheet steel</p> <p>Brush strip: Plastic, UL 94-V0</p>   |
| Surface finish          | Spray-finished   |
| Colour                  | RAL 9005   |
| Supply includes         | <p>Cable link</p> <p>Brush strip</p>   |
| Installation options    | For attachment between the front and rear 482.6 mm (19") mounting level  |
| Distance between levels | 500 - 750 mm   |
| Units                   | 1 U  |
| Load capacity (static)  | 150 N  |
| To fit                  | for enclosure-independent mounting   |

# Features

|                               |  |
|-------------------------------|--|
| Note                          | Assembly parts should be ordered separately              |
| Packs of                      | 1 pc(s).   |
| Net weight                    | 6.8 kg   |
| Gross weight                  | 7.239 kg   |
| PCF per pack (cradle-to-gate) | PCF-Wert 18,78 kg Co <sup>2</sup> e                      |
| Customs tariff number         | 73269098   |
| Product description           | 19" cable bridge, depth-variable, 500 - 750 mm, RAL 9005 |