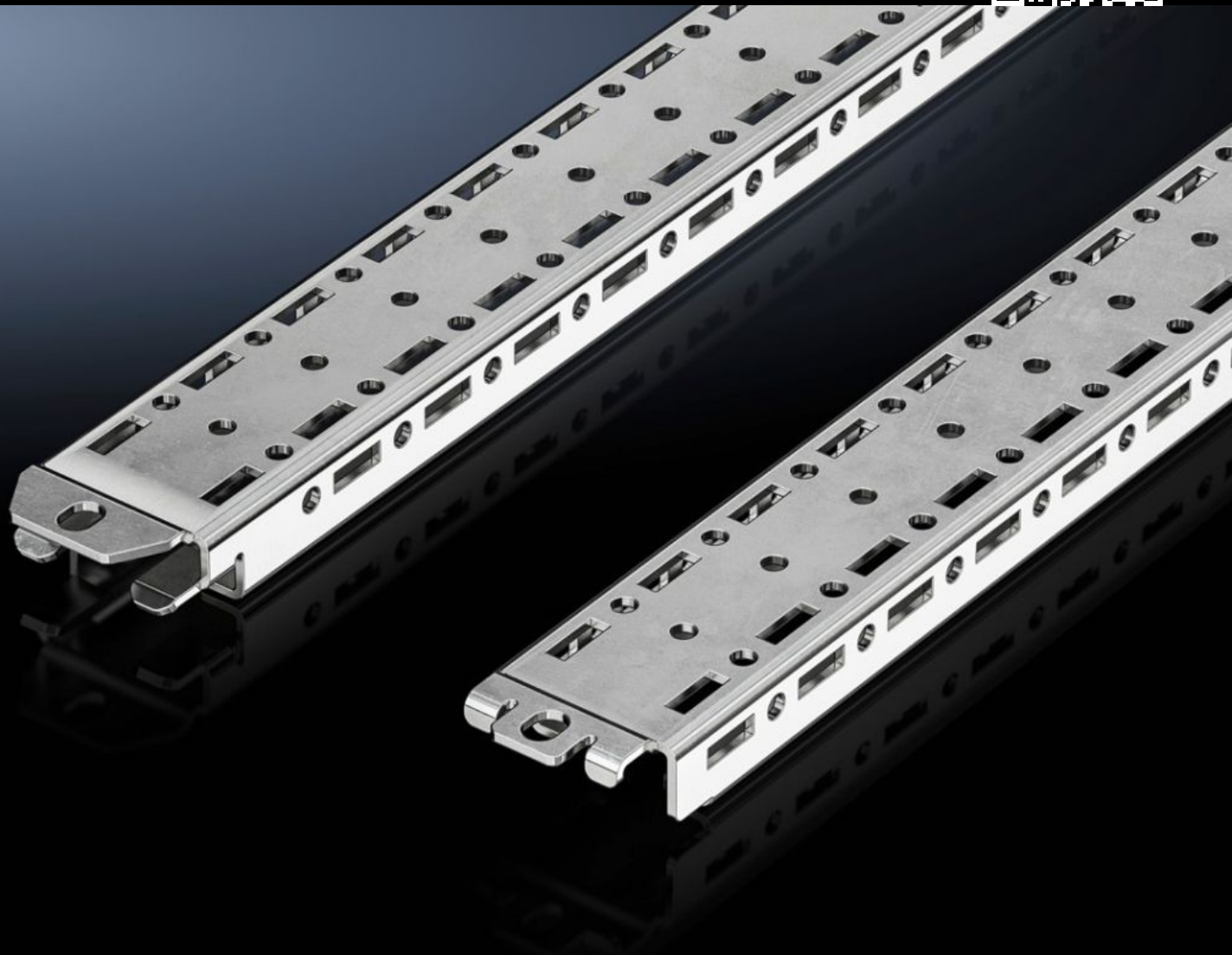


# Rittal – The System.

Faster – better – everywhere.



## VX 5302.170 Support rail

State: 23/05/2026 (Source: [rittal.com/uae-en](http://rittal.com/uae-en))

ENCLOSURES

POWER DISTRIBUTION

CLIMATE CONTROL

IT INFRASTRUCTURE

SOFTWARE & SERVICES

FRIEDHELM LOH GROUP



# VX 5302.170 - Support rail for VX IT

## Features

Model No.	VX 5302.170
Product description	For attaching mounting angles in enclosures > 1000 mm deep and 800 mm wide when using depth stays. The support rail improves load distribution in network/server racks.
Technical specifications	Side round and square punchings
Material	Sheet steel
Supply includes	Assembly parts
Assembly instruction	The support rail is screw-fastened onto the centre of the frame structure at right-angles below the depth stays
To fit	Width: = 800 mm Depth: > 1,000 mm
Packs of	1 pc(s).
Net weight	0.83 kg
Gross weight	0.961 kg
PCF per pack (cradle-to-gate)	3.7 kg CO2 eq (Cat B)
Note on PCF category	Category B: PCF value (cradle-to-gate) based on the product weight, approximately calculated and self-declared
Customs tariff number	73269098
ETIM 9	EC002620
ECLASS 8.0	27189261
Product description	Support rail for VX IT, for attachment of mounting angles in enclosures with depth > 1000 mm and width 600 mm or 800 mm when depth stays are deployed. The support rail improves load distribution