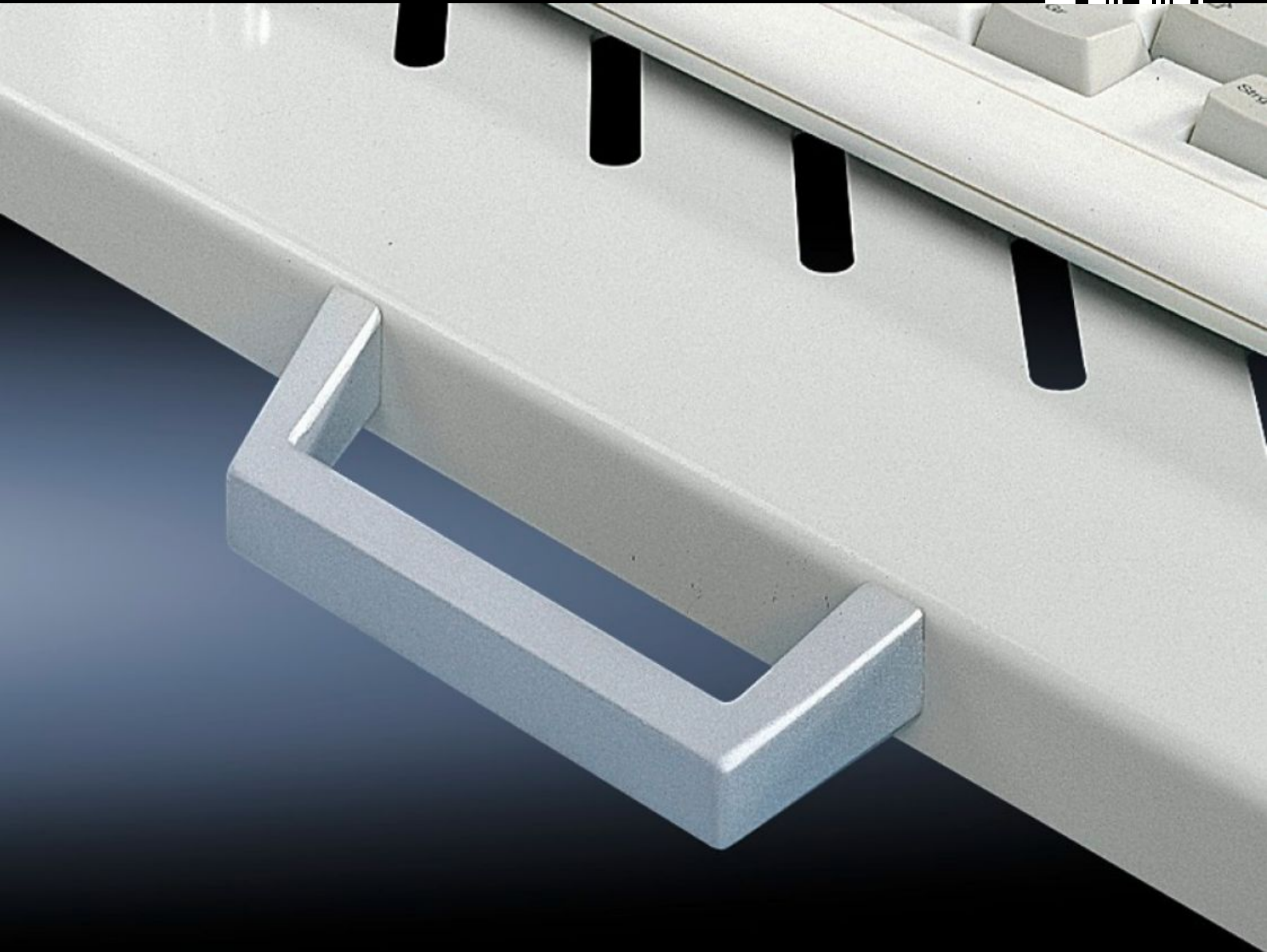


Rittal – The System.

Faster – better – everywhere.



DK 5501.730 Handles

State: 06/05/2026 (Source: rittal.com/uae-en)

ENCLOSURES

POWER DISTRIBUTION

CLIMATE CONTROL

IT INFRASTRUCTURE

SOFTWARE & SERVICES

FRIEDHELM LOH GROUP



DK 5501.730 - Handles for pull-out component shelves

Handles for ease of use with component shelves.

Features

Model No.	DK 5501.730
Product description	The component shelves are prepared for the attachment of handles.
Material	Die-cast zinc
Surface finish	Spray-finished, silver-grey
Supply includes	Assembly parts
Packs of	2 pc(s).
Net weight	0.176 kg
Gross weight	0.197 kg
Customs tariff number	83024110
ETIM 9	EC002626
ECLASS 8.0	27189266
Product description	DK Handles, For pull-out component shelves, Spray-finished, silver-grey