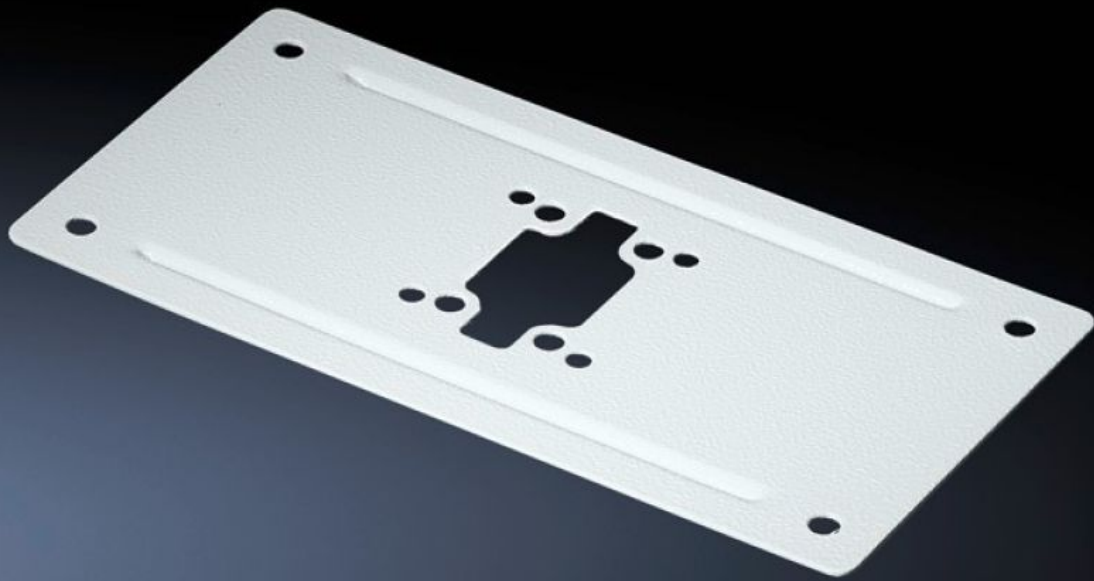


Rittal – The System.

Faster – better – everywhere.



CP 6106.110

Enclosure reinforcement

State: 06/05/2026 (Source: rittal.com/uae-en)

ENCLOSURES

POWER DISTRIBUTION

CLIMATE CONTROL

IT INFRASTRUCTURE

SOFTWARE & SERVICES

FRIEDHELM LOH GROUP



CP 6106.110 - Enclosure reinforcement rigid

For external or internal reinforcement of enclosures of a corresponding size.

Features

Model No.	CP 6106.110
Product description	For external or internal reinforcement of enclosures of a corresponding size. Smaller enclosures may also be mounted directly without reinforcement.
Material	Sheet steel
Supply includes	Assembly parts for the enclosure and support section plus 2 seals.
Support arm connection (type)	CP 60
Installation options	for support arm connection Ø 130 mm
To fit	Width: ≥ 300 mm Depth: ≥ 150 mm
Packs of	1 pc(s).
Net weight	0.8 kg
Gross weight	0.9 kg
PCF per pack (cradle-to-gate)	3.4 kg CO2 eq (Cat B)
Note on PCF category	Category B: PCF value (cradle-to-gate) based on the product weight, approximately calculated and self-declared
Customs tariff number	73269098
ETIM 9	EC002535
ECLASS 8.0	27182604
Product description	CP Enclosure reinforcement, rigid, CP 60, from enclosure dimensions: 300x150 mm