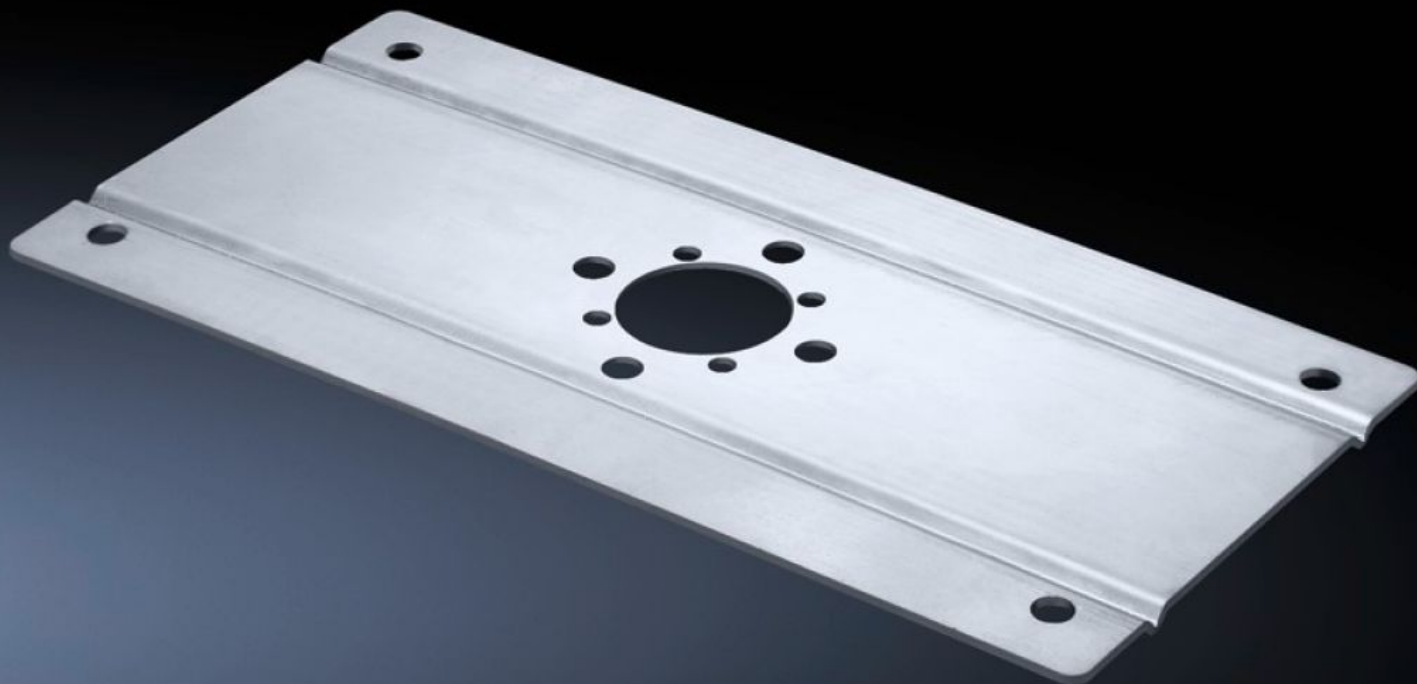
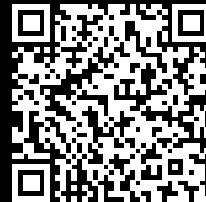


# Rittal – The System.

Faster – better – everywhere.



## CP 6143.310

## Enclosure reinforcement

State: 03/08/2025 (Source: [rittal.com/uae-en](http://rittal.com/uae-en))

ENCLOSURES

POWER DISTRIBUTION

CLIMATE CONTROL

IT INFRASTRUCTURE

SOFTWARE & SERVICES

FRIEDHELM LOH GROUP



# CP 6143.310 - Enclosure reinforcement

For external or internal reinforcement of enclosures of a corresponding size.

## Features

Model No.	CP 6143.310
Product description	For external or internal reinforcement of enclosures of a corresponding size. Smaller enclosures may also be mounted directly without reinforcement.
Material	Stainless steel 1.4301 (AISI 304)
Supply includes	Assembly parts for the enclosure and support section plus 2 seals.
Installation options	for support arm connection stainless steel Ø 40 mm
Support arm connection (type)	CP 40
To fit	Width: ≥ 300 mm Depth: ≥ 150 mm
Packs of	1 pc(s).
Net weight	0.76
Gross weight	0.811
PCF per pack (cradle-to-gate)	3.4 kg CO2 eq (Cat B)
Note on PCF category	Category B: PCF value (cradle-to-gate) based on the product weight, approximately calculated and self-declared
Customs tariff number	83024900
EAN	4028177305748
ETIM 9	EC002535
ECLASS 8.0	27189271