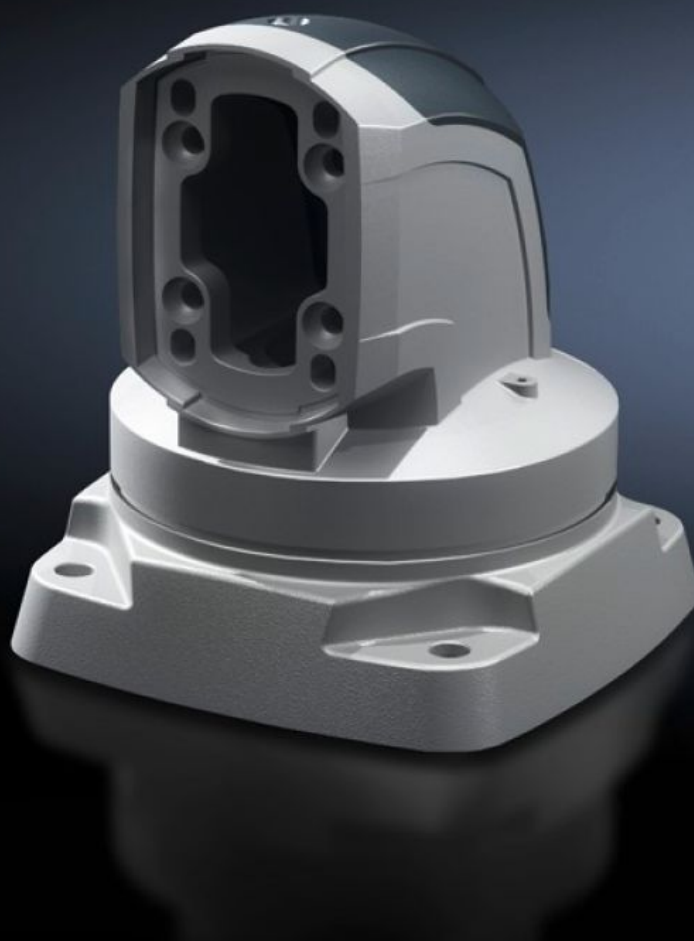
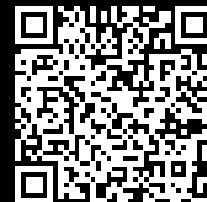


Rittal – The System.

Faster – better – everywhere.



CP 6212.700

Top-mounted joint CP 120

State: 08/09/2025 (Source: rittal.com/uae-en)

ENCLOSURES

POWER DISTRIBUTION

CLIMATE CONTROL

IT INFRASTRUCTURE

SOFTWARE & SERVICES

FRIEDHELM LOH GROUP



CP 6212.700 - Top-mounted joint CP 120 Horizontal outlet

For swivel mounting of the support arm system on horizontal surfaces – also suitable for suspending from the ceiling. Removable cover for simple cable entry.

Features

Model No.	CP 6212.700
Product description	For swivel mounting of the support arm system on horizontal surfaces – also suitable for suspending from the ceiling. Removable cover for simple cable entry.
Material	Top-mounted joint: Cast aluminium Cover: Plastic
Colour	Top-mounted joint: RAL 7035 Cover: RAL 7024
Supply includes	Seals Screws for restricting rotation range Adjusting screws Self-tapping screws for support section attachment
Rotating/tilting	Yes
Rotation angle/swivel area	approx. 330°. The range of rotation can be limited by inserting the screws/limit plate provided.
Packs of	1 pc(s).
Net weight	5.75
Gross weight	5.86
Customs tariff number	76169990
EAN	4028177683990
ETIM 9	EC000882
ECLASS 8.0	27400556

Approvals

Explanations

Manufacturer's declaration