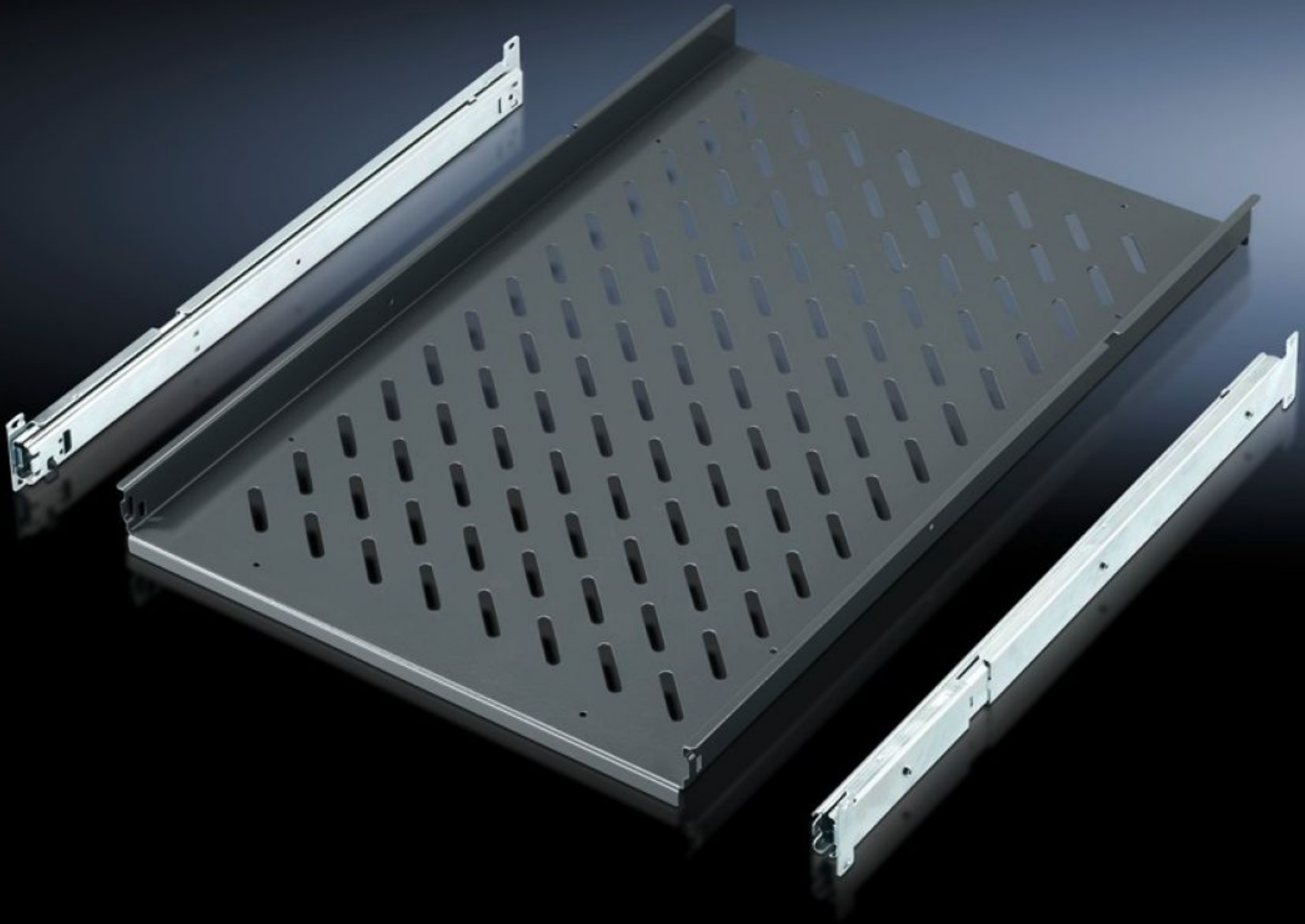
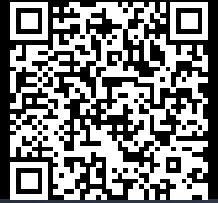


**Rittal – The System.**

Faster – better – everywhere.



**IW 6902.980**

**Component shelf, pull-out**

State: 22/05/2026 (Source: [rittal.com/uae-en](http://rittal.com/uae-en))

ENCLOSURES

POWER DISTRIBUTION

CLIMATE CONTROL

IT INFRASTRUCTURE

SOFTWARE & SERVICES

FRIEDHELM LOH GROUP



# IW 6902.980 - Component shelf, pull-out for TS, PC, IW

For direct mounting on the vertical TS enclosure section, enclosure width.

## Features

Model No.	IW 6902.980
Product description	For direct mounting on the vertical TS enclosure section.
Material	Sheet steel
Colour	RAL 7015
Supply includes	2 telescopic slides
Load capacity	30 kg surface load, static
Note	For enclosures without mounting plate
Support area	Width: 465 mm Depth: 745 mm
To fit	Enclosure type: TS PC IW Width: = 600 mm Depth: = 800 mm
Packs of	1 pc(s).
Net weight	8.393 kg
Gross weight	8.835 kg
PCF per pack (cradle-to-gate)	34.7 kg CO2 eq (Cat B)
Note on PCF category	Category B: PCF value (cradle-to-gate) based on the product weight, approximately calculated and self-declared
Customs tariff number	94039910
ETIM 9	EC002620
ECLASS 8.0	27189261
Product description	IW Component shelf, pull-out, for TS, PC, IW, for enclosure depth 800 mm