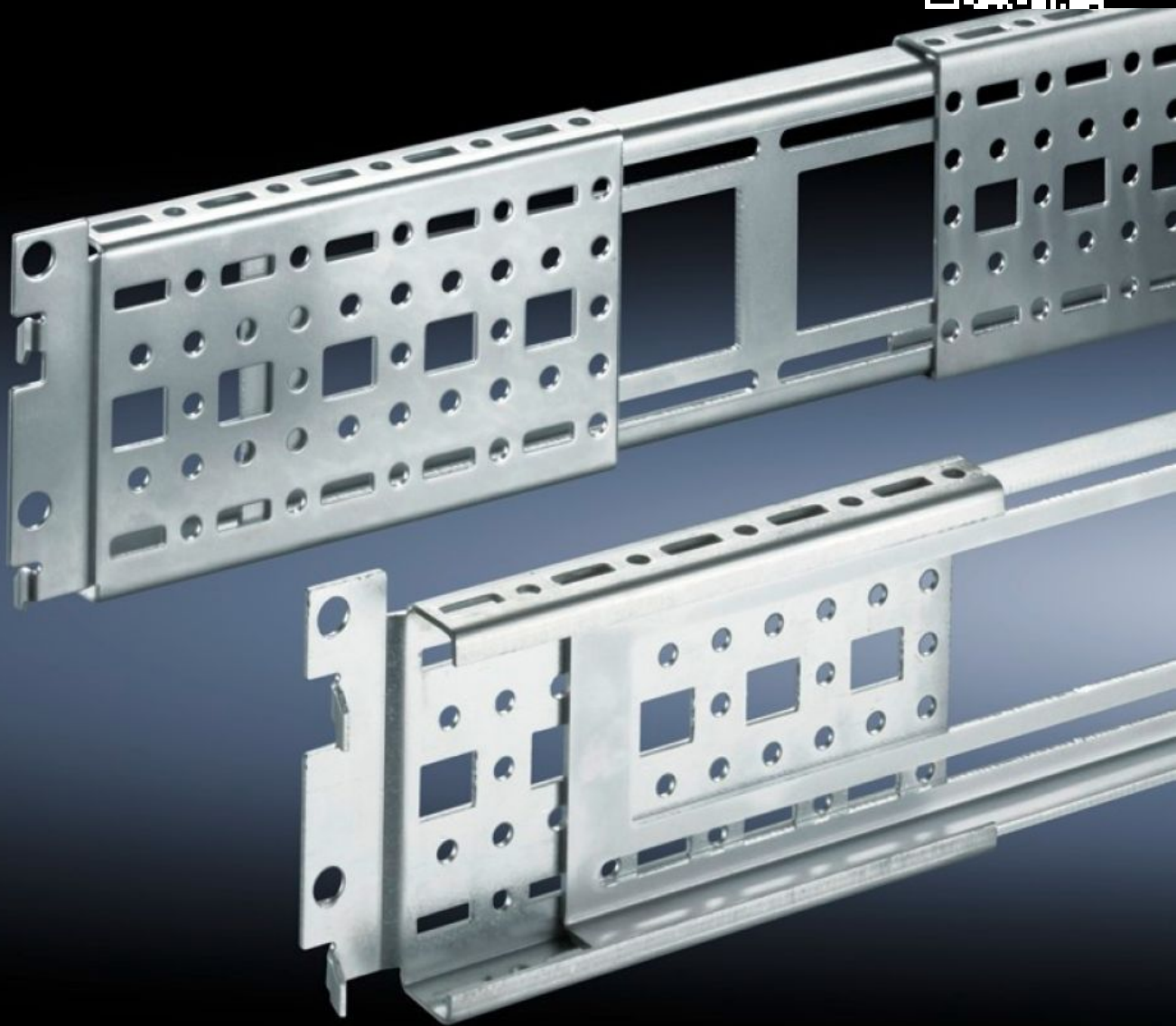


**Rittal – The System.**

Faster – better – everywhere.



**DK 7000.678**

**Punched section with mounting flange, 17 x 73 mm, depth-variable for mounting frame**

State: 24/05/2026 (Source: [rittal.com/uae-en](http://rittal.com/uae-en))

ENCLOSURES

POWER DISTRIBUTION

CLIMATE CONTROL

IT INFRASTRUCTURE

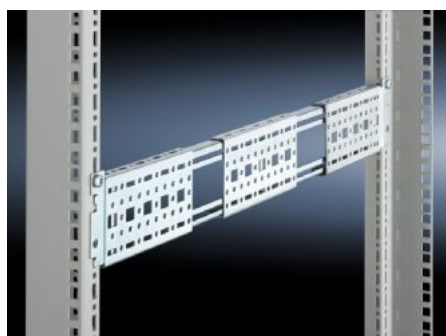
SOFTWARE & SERVICES

FRIEDHELM LOH GROUP



# DK 7000.678 - Punched section with mounting flange, 17 x 73 mm, depth-variable for mounting frame for TS, TE, TX CableNet

For flexible interior installation, and/or to accommodate additional built-in components. The punched sections with mounting flanges may be located in the enclosure depth between two mounting frames.



## Features

Model No.	DK 7000.678
Product description	Punched sections with mounting flanges may be suspended between two mounting frames with a 482.6 mm (19") distance between levels of 650-820 mm. An additional screw fastening secures the unit.
Material	Sheet steel
Surface finish	Zinc-plated
Supply includes	Assembly screws
To fit	for TS, TE, TX CableNet
Length	530: 700 mm
Packs of	2 pc(s).
Net weight	1.64 kg
Gross weight	1.84 kg
Customs tariff number	73269098
ETIM 9	EC002625

# Features

---

ECLASS 8.0

27189234

---

Product description

DK punched section with mounting flange, for TS, TX CableNet, TE,  
17 x 73 mm, L: 530 - 700 mm

## Tender text

Flexible punched section, 530 - 700 mm

2 x variable punched section, each fitted with a  
movable centre piece, includes assembly parts.  
Distance between 19" levels (mm): 650 - 820 mm

Material: Sheet steel, zinc-plated, passivated