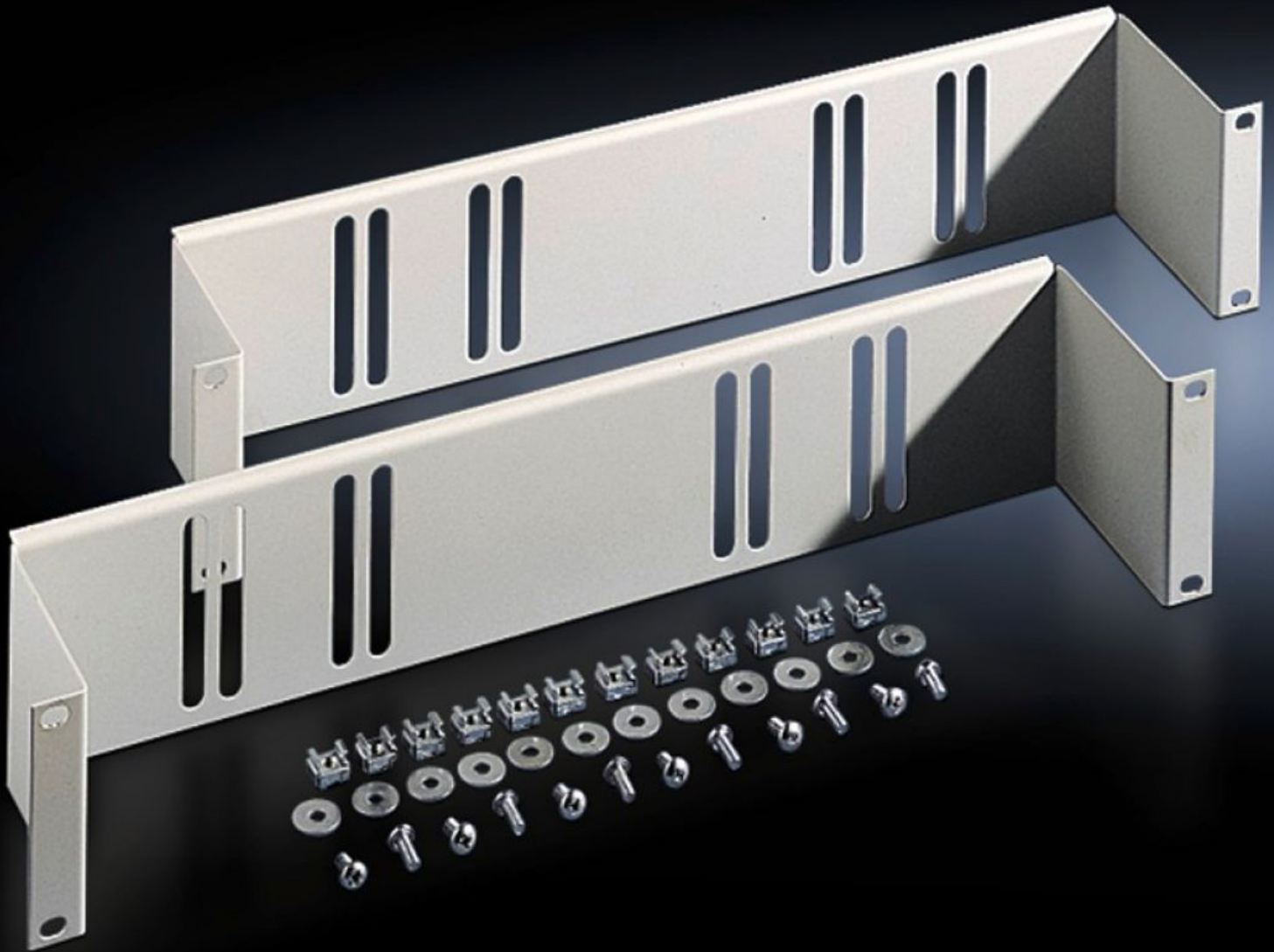


Rittal – The System.

Faster – better – everywhere.



DK 7050.035

Accommodation system, 2 U

State: 22/05/2026 (Source: rittal.com/uae-en)

ENCLOSURES

POWER DISTRIBUTION

CLIMATE CONTROL

IT INFRASTRUCTURE

SOFTWARE & SERVICES

FRIEDHELM LOH GROUP



DK 7050.035 - Accommodation system, 2 U for LSA installation kit

To accommodate LSA mounting troughs/universal mounting brackets on the 482.6 mm (19") mounting angle.



Features

Model No.	DK 7050.035
Product description	To accommodate LSA support systems within the 482.6 mm (19") mounting level.
Material	Sheet steel
Surface finish	Spray-finished
Colour	RAL 7035
Supply includes	Assembly parts
Dimensions	Depth: 98.5 mm
Packs of	2 pc(s).
Net weight	1.204 kg
Gross weight	1.38 kg
PCF per pack (cradle-to-gate)	5.2 kg CO2 eq (Cat B)
Note on PCF category	Category B: PCF value (cradle-to-gate) based on the product weight, approximately calculated and self-declared
Customs tariff number	83024900
ETIM 9	EC002620

Features

ECLASS 8.0

27189261

Product description

DK Accommodation system for LSA installation kit, 2 U

Tender text

LSA installation kit, RAL 7035

Installation in the enclosure width

Material: Sheet steel, painted, RAL 7035

Dimensions (W x H x D): 482,6 mm x 89 mm (2 HE) x 985 mm