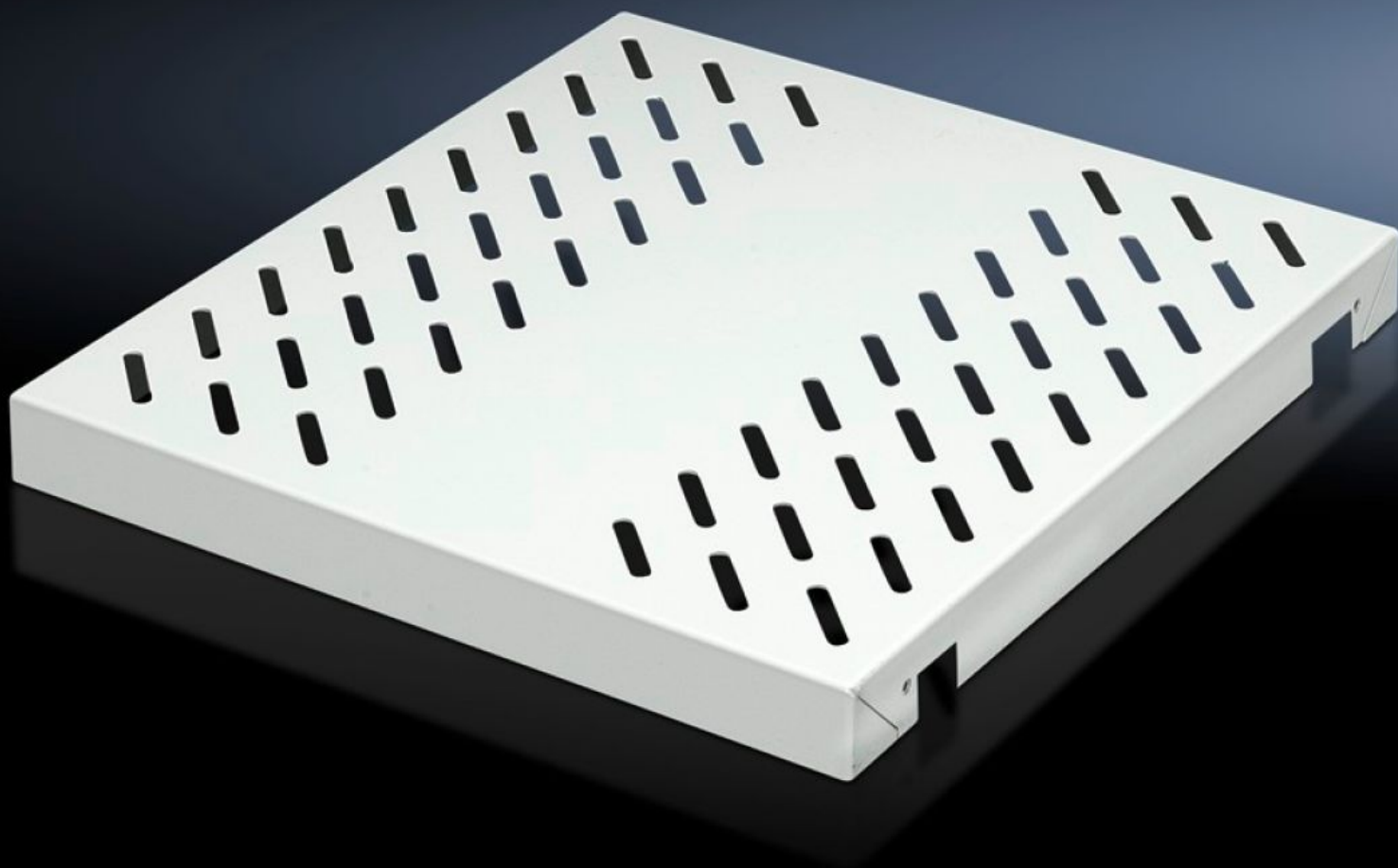
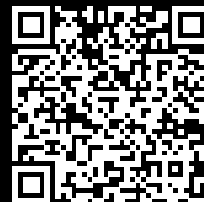


# Rittal – The System.

Faster – better – everywhere.



## DK 7063.897

## Component shelf, heavy duty

State: 25/06/2025 (Source: [rittal.com/uae-en](http://rittal.com/uae-en))

ENCLOSURES

POWER DISTRIBUTION

CLIMATE CONTROL

IT INFRASTRUCTURE

SOFTWARE & SERVICES

FRIEDHELM LOH GROUP



# DK 7063.897 - Component shelf, heavy duty 482.6 mm (19") for TE, TS

For mounting on L-shaped mounting angles and 482.6 mm (19") mounting frame, load capacity: 100 kg.

## Features

Model No.	DK 7063.897
Product description	L-shaped mounting angles, 482.6 mm (19") mounting frame
Material	Sheet steel
Colour	RAL 7035
Supply includes	Assembly parts
Load capacity	100 kg area load
Dimensions	Width: 409 mm Height: 45 mm Depth: 700 mm
Packs of	1 pc(s).
Net weight	7.712
Gross weight	8.118
Customs tariff number	94039910
EAN	4028177305588
ECLASS 8.0	27189261

# Tender text

482.6 mm (19") heavy duty component shelf

For component shelf D = 700 mm

Material: Sheet steel, spray finished in RAL 7035

Load capacity: 100 kg surface load, static