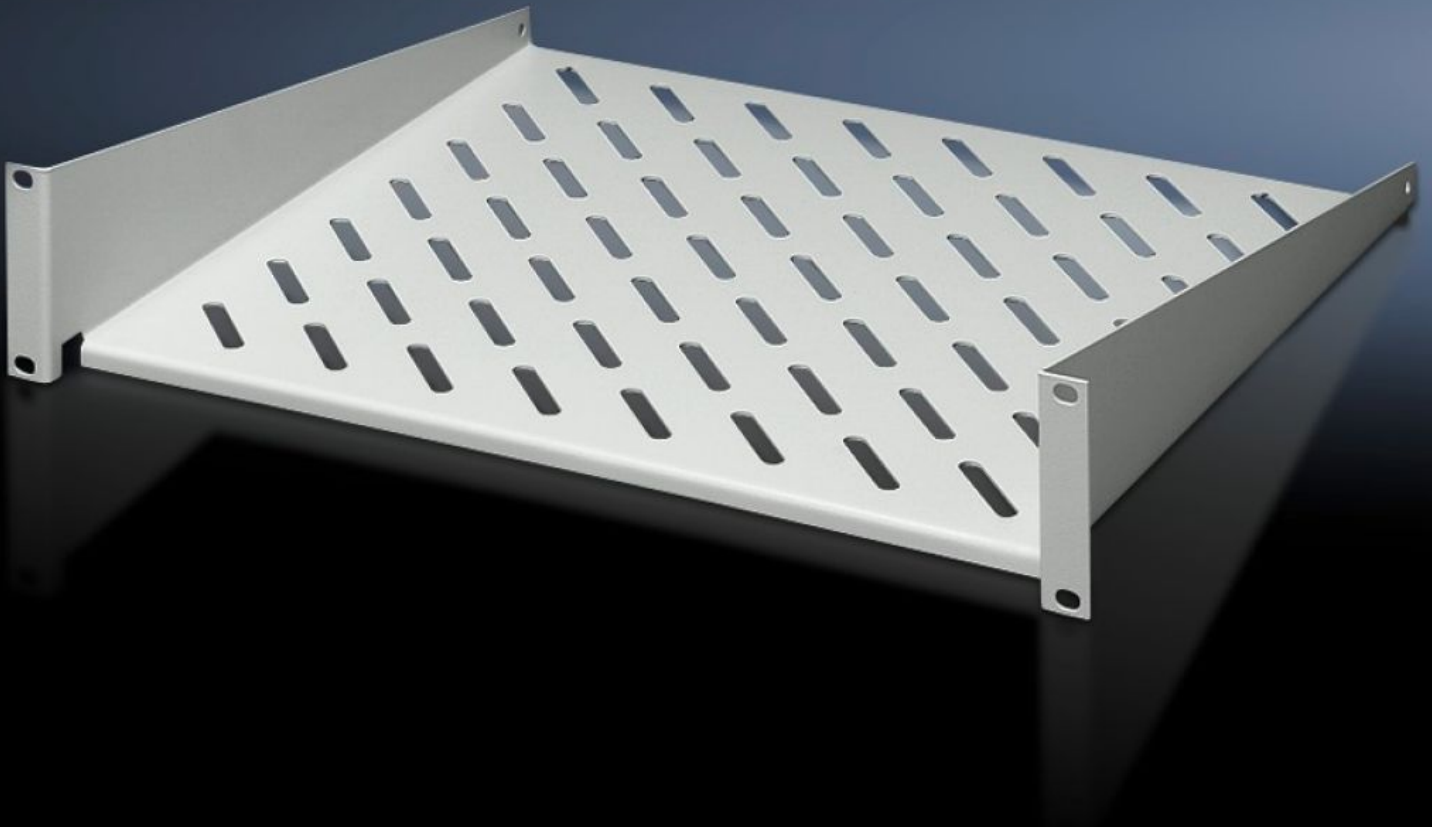


Rittal – The System.

Faster – better – everywhere.



DK 7119.455

Component shelf, static installation

State: 18/06/2026 (Source: rittal.com/uae-en)

ENCLOSURES

POWER DISTRIBUTION

CLIMATE CONTROL

IT INFRASTRUCTURE

SOFTWARE & SERVICES

FRIEDHELM LOH GROUP



DK 7119.455 - Component shelf, static installation

Component shelf 2 SU, static installation for attachment to the metric system punchings. Load capacity: 25 kg.

Features

Model No.	DK 7119.455
Design	Metric
Product description	Component shelf 2 SU, static installation for attachment to the system punchings of metric mounting angles. Load capacity: 25 kg.
Applications	For mounting on a metric mounting level
Material	Sheet steel
Surface finish	Spray-finished
Colour	RAL 7035
Load capacity	25 kg surface load, static
Note	Not suitable for combination with telescopic slides.
Dimensions	Width: 535 mm Depth: 400 mm
Packs of	1 pc(s).
Net weight	3.563 kg
Gross weight	3.763 kg
Customs tariff number	94039910
ECLASS 8.0	27189261

Tender text

Component shelf 2 U, static installation,
482.6 mm (19 inch)/535 mm (metrisch)

If only one 482.6 mm (19 inch) or metric mounting
level is available for mounting a component shelf,
this variant offers a particularly
cost-effective solution.

Combination with telescopic slides is not possible.