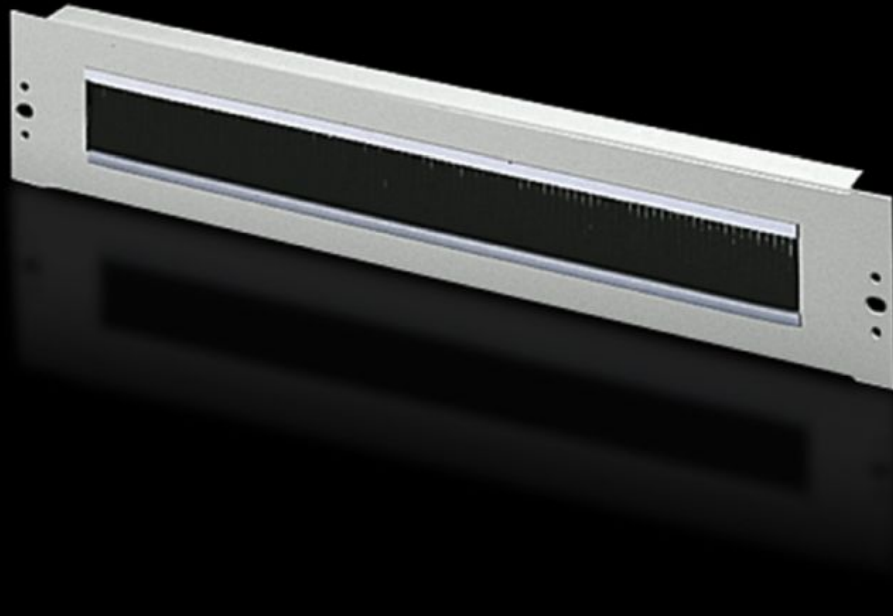
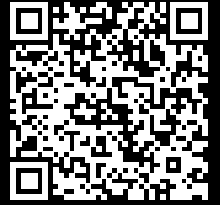


Rittal – The System.

Faster – better – everywhere.



DK 7150.535

**Cable management panel with
brush strip**

State: 21/06/2026 (Source: rittal.com/uae-en)

ENCLOSURES

POWER DISTRIBUTION

CLIMATE CONTROL

IT INFRASTRUCTURE

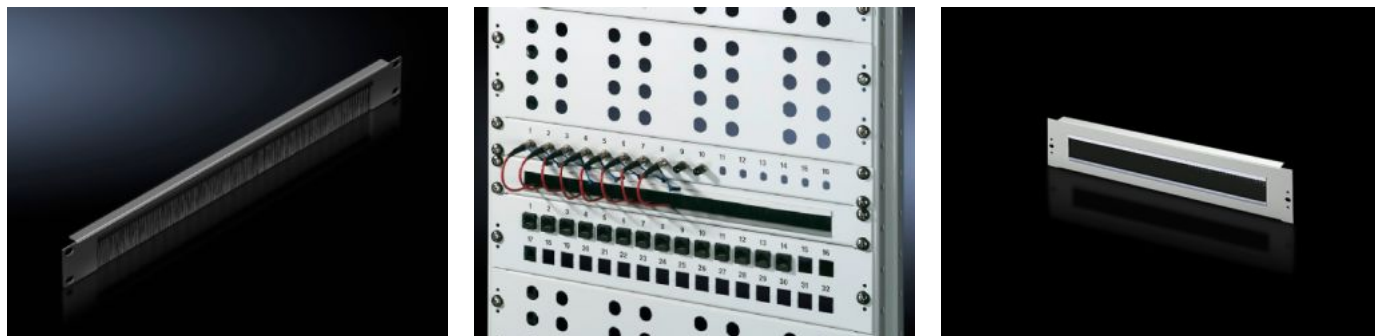
SOFTWARE & SERVICES

FRIEDHELM LOH GROUP



DK 7150.535 - Cable management panel with brush strip 482.6 mm (19")

With cut-out and brush strip for cable routing.



Features

Model No.	DK 7150.535
Product description	For convenient, simple cable routing between two areas separated by a 482.6 mm (19") mounting level, for example, between the front and rear areas of the 482.6 mm (19") mounting level.
Applications	For locking and simultaneous cable routing in installation zones to the 1 U, 482.6 mm (19") mounting standard
Material	Sheet steel Brush strip: Plastic, UL 94-HB
Surface finish	Spray-finished
Colour	RAL 7035
Mounting cut-out	Width:390 mm Height:40 mm
Dimensions	Width: 482.6 mm
Units	2 U
Packs of	1 pc(s).
Net weight	0.637 kg
Gross weight	0.7 kg
Customs tariff number	94039910

Features

ETIM 9	EC000322
ECLASS 8.0	27400604
Product description	DK Cable entry panel, 2 U, 482.6 mm (19"), WxH: 390x40 mm

Tender text

482.6 mm (19") cable entry panel, 2 U

482.6 mm (19") cable entry panel, 2 U
The cable is fed through a cutout (410 x 40 mm).
The cutout also has an edge protector and a
brush insert that protects against dust.

Material: Sheet steel

Colour: RAL 7035